



Map on cover page: NUTS regions of the Central Baltic
Programme 2014–2020 on background map.
© EuroGeographics for the administrative boundaries

Central Baltic Programme 2014–2020
Funded Projects 3rd edition

Layout: Pia Sonck-Koota
Printing House: Kopio Niini Finland OY Turku, Finland 2018



CENTRAL BALTIC FUNDED PROJECTS

**A compilation of 97 projects
funded by the Central Baltic
Programme 2014-2020**

Contents

Welcoming words from the Joint Secretariat.....	3
Introduction to the programme	5
Presented projects by sub-programme	6
Projects funded by the Central Baltic Programme 2014-2020	9
Priority 1: Competitive economy.....	11
Priority 2: Sustainable use of common resources	33
Priority 3: Well-connected region.....	61
Priority 4: Skilled and socially inclusive region	81
Projects in alphabetical order.....	114
Projects by call.....	115
Projects by end date.....	116
Projects by lead partner country	117
Contact information	118

Welcoming words from the Joint Secretariat

We, the Central Baltic team, are happy that you are interested in our cooperation projects and warmly welcome you to the third edition of this booklet. In the following pages you'll find a wide variety of efforts, all trying to solve common problems together and across borders.

The new Central Baltic Programme 2014-2020 continues the legacy of the programming period that spanned from 2007 to 2013. Experiences, best practices and know-how have been passed on and they help streamlining the process of information transfer for potential applicants, ongoing projects and of course, people benefitting from the outcomes of our projects.

From plan to action

Preparations for the Central Baltic Programme 2014-2020 started two years prior to launch. Between December 2012 and July 2014, stakeholders from all over the region were busy developing and reviewing content for the upcoming programme.

For the current Interreg programming period, the European Commission defined 11 potential co-operation themes.

It was the task of regional and national representatives from Estonia, Latvia, Finland, including the Åland islands, and Sweden to commonly agree on which of these themes should be chosen. In addition, the Managing Authority organised thematic seminars and met regional stakeholders in many different events to collect information about the needs and strengths of the region.

During the development of the new programme, discussions centered around regions where co-operation would bring the biggest improvements. Despite a 20% funding increase from the previous programming period, focusing efforts and maximising impact was crucial, since Interreg programmes always operate within a limited budget and time-frame.

Finally, four priorities with 11 specific objectives were chosen to be included into the new programme. Each specific objective was discussed in detail to ensure that stakeholders had a common understanding of desired achievements. In connection to this, potential activities and partners were mapped.

Based on this work, the Member States agreed on the final formulations and in

July 2014, the programme was ready to be submitted to the European Commission. In the Commission, careful reading followed and on 16 December 2015 the programme was officially approved.

Pre-approval work for the programme was vital to ensure the best possible selection of co-operation fields, which furthermore leads to real and sustainable process within the region. This was put to test in the first call. Would there be enough interest in the chosen fields? Will the projects lead to the desired change in the region?

This booklet is proof that the “test” was passed with flying colors. During the first call, a landslide of 177 project ideas were submitted. After assessing each project idea, the Steering Committee

selected 42 projects for funding. The selected projects clearly contribute to the programme objectives and fill the need for such activities. Furthermore, strong partnerships that help finding practical solutions across borders, exist in these projects. After that, there have been two more calls and the programme has now a total of 97 contracted projects.

You can read more about these 97 projects in the next pages. As the programme develops together with its projects, this booklet will be updated accordingly. We are happy to embark on this journey and inviting you to join us. Get to know our projects, learn from their results, use their outputs, share your experiences with them or come up with an idea of your own!



Introduction to the programme

The Central Baltic Programme 2014-2020 is a cross-border cooperation programme under the European Territorial Cooperation objective. The Programme aims to achieve the following strategic goals: competitive economy, sustainable use of common resources, well-connected region and skilled and socially inclusive region. These goals are further divided into Specific Objectives (listed below).

Additionally, the Programme will contribute to the goal of Europe 2020 strategy for “smart”, “sustainable” and “inclusive” growth as well as to the achievement of Introduction to

the programme economic, social and territorial cohesion. The EU Strategy for the Baltic Sea Region is taken into account by aiming to contribute to its objectives “save the sea”, “connect the region” and “increase prosperity”.

Due to the size and complexity of the Central Baltic Programme, there are three geographically defined sub-programmes: the Central Baltic, the Southern Finland – Estonia and the Archipelago and Islands sub-programme. The Programme priorities and specific objectives are common for all three sub-programmes.

Priority 1: Competitive economy

Specific Objectives:

- 1.1. New Central Baltic knowledge intensive companies
- 1.2. More entrepreneurial youth
- 1.3. More exports by the Central Baltic companies to new markets

Priority 3: Well-connected region

Specific Objectives:

- 3.1. Improved transport flows of people and goods
- 3.2. Improved services of existing small ports to improve local and regional mobility and contribute to tourism development

Priority 2: Sustainable use of common resources

Specific Objectives:

- 2.1. Natural and cultural resources developed into sustainable tourist attractions
- 2.2. Sustainably planned and managed marine and coastal areas
- 2.3. Better urban planning in the Central Baltic region
- 2.4. Reduced nutrients, hazardous substances and toxins inflow into the Baltic Sea

Priority 4: Skilled and socially inclusive region

Specific Objectives:

- 4.1. More people benefiting from stronger Central Baltic communities (6 projects)
- 4.2. More aligned vocational education and training (VET) programmes in the Central Baltic region

Sub-programme:

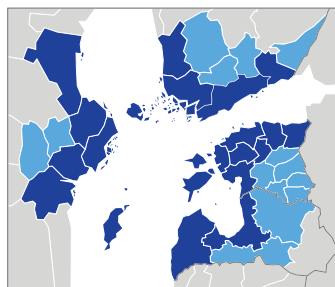
CENTRAL BALTIC

Priority 1: Competitive economy.....11

BELT	12
CB HealthAccess	13
CB2East	14
CBEwB.....	15
ICT Meta Cluster	17
SME2GO.....	19
Springboard	20
STARPABS.....	21
CAITO	24
CB 4 GameCamps	26
NNFA.....	28
DigiYouth.....	29
SME Aisle	30
IHMEC	31
LEF network to China	32

Priority 2: Sustainable use of common resources.....33

SmartZoos.....	34
LiviHeri	35
HANSA	36
Lights On!	37
NATTOURS	38
Baltic Urban Lab	39
Live Baltic Campus	40
iWater	41
INSURE	42
WATERCHAIN	43
BLASTIC.....	44
NutriTrade.....	45
GreenAgri	46
NUTRINFLOW	47
Augmented Urbans.....	53
Coast4us.....	54
Baltic Wings	55
Lakesperience.....	56
HEAT	57
SEABASED	58
HEAWATER	59



■ core area ■ additional area

Priority 3: Well-connected region.....61

SMART E67	63
SmartPorts	66
SmartLog.....	69
FinEstSmartMobility	71

Priority 4: Skilled and socially inclusive region81

PIM.....	83
Let us be active!	84
TheatreEx	87
DeDiWe.....	88
ITSVET	89
EDU-SMEs.....	90
EDU-RAIL	92
EmpowerKids.....	93
Active Age.....	94
ACUCARE	98
OnBoard-Med.....	99
BOOSTED	100
NURED	101
Crea-RE.....	104
UniLog	106
ARC	107
MUCH MORE.....	111
PRIME	112
SimE	113

Sub-programme:

ARCHIPELAGO AND ISLANDS

Priority 1: Competitive economy11

 RIBS18

 Archipelago Partnerships25

Priority 2: Sustainable use of
common resources33

 DefenceArch49

 St Olav Waterway51

 BALTACAR52

Priority 3: Well-connected region61

 ADAPT62

 MASAPO67

 FamilyPorts68

 PortMate72

 EfficientFlow73

 Smart Marina74

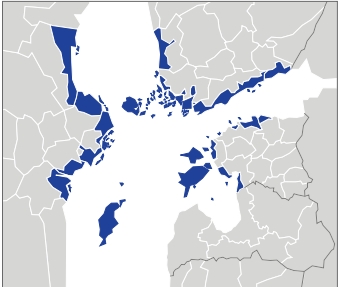
 Sustainable Gateways75

 BATSECO-BOAT76

 SEASTOP77

Priority 4: Skilled and socially
inclusive region81

 Gardens110



core area



Sub-programme:

SOUTHERN-FINLAND AND ESTONIA

Priority 1: Competitive economy.....11

CLUSME	16
TALSINKI	22
SPARKS	23
FINEEX Music.....	27

Priority 2: Sustainable use of
common resources.....33

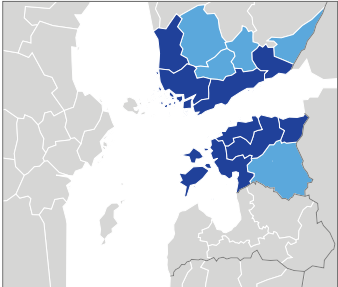
SustainBaltic	48
Plan4Blue	50

Priority 3: Well-connected region61

MobiCarnet	64
30MILES.....	65
FinEst Link.....	70
REFEC	78
E-TICKETING	79

Priority 4: Skilled and socially
inclusive region81

PAD	82
REGI	85
SIPPE	86



■ core area ■ additional area

SAFHY	91
YOUTH-SPORT-VOL.....	95
CROSS	96
FEM (Female Estonian Migrant) ..	97
HPP	102
NatureBizz.....	103
CoMET	105
CoMe Strong.....	108
DSB	109



Photo: Marja Halkilahti

Projects funded by the Central
Baltic Programme 2014-2020

PRIORITY 1
Competitive economy



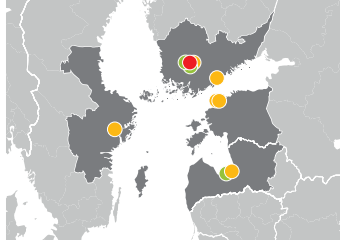
BELT

Baltic Entrepreneurship Laboratories

The BELT project creates new cross-border companies, joint venture opportunities and cooperation between startups, teams and individuals in the Central Baltic region. The project focuses on business development under the theme of “Smart City”, which is a priority at the EU-level and many regional innovation policies to support cross-sectoral smart and eco-efficient innovations.

BELT strives to attract potential startups and entrepreneurship-oriented students to the project incubator activities through relevant networks, platforms and road shows. BELT organizes intensive business development BootCamps for startups and individuals to accelerate business ideas and concepts, and to look for market entries and skilled team members across borders. Further, a coaching network will be created to offer business and seed funding coaching for the best established cross-border teams and business ideas from the BootCamps.

The project will result in at least 5 joint and 10 co-operating knowledge intensive companies. The project will support 30 new knowledge intensive companies in the Central Baltic region.



Specific Objective 1.1. New Central Baltic knowledge intensive companies
Subprogramme Central Baltic
Call Call 1 Regular projects

Duration 10/2015 - 9/2018
Total Project Budget (€) 1 101 851
ERDF (€) 843 907
Project WWW www.baltic.org

Lead Partner The Baltic Institute of Finland, Finland (Tampere)

Project Partners New Factory Ltd., Finland (Tampere), Demola East Sweden, Sweden (Norrköping), Demola Latvia, Latvia (Riga), Laurea University of Applied Sciences, Finland (Vantaa)

Associated Partners Tampere Region Economic Development Agency Tredea, Finland (Tampere), The City of Tampere, Finland (Tampere), Jürmala City Council, Latvia (Jürmala)

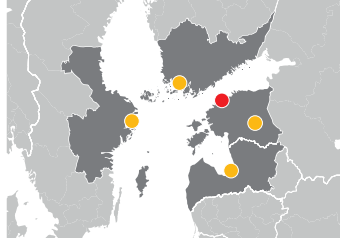
CB HealthAccess

Access to Distant Markets in Health and Wellness

The existing e-health and life-science clusters see a clear need for a cross-border meta-cluster to solve common challenges of supporting expansion of their innovative companies. The project CB HealthAccess focuses on supporting health technology companies to enter into new distant markets in South Korea, US, India and Uganda with their products.

The project activities include gathering market information (legal setup, rules for health products, financial schemes in health, competition, technological environment, partnerships, etc.), adaption of products, marketing and sales activities, involvement of experts from the target market, business missions, 121 meetings, negotiations and closing of sales. The aim is to establish a lasting relation to the target markets to guarantee smoother access for new innovative health technology companies from the clusters.

The project aims at minimum of three new sales by a company of a participating cluster in each of the four target markets, i.e. 12 new sales in these distant markets. Half of these will be achieved during the project duration and the other half within one year after the end of the CB Health Access project.



Specific Objective 1.3. More exports by the Central Baltic companies to new markets

Subprogramme Central Baltic
Call Call 1 Regular projects

Duration 9/2015 - 12/2018

Total Project Budget (€) 1 561 525

ERDF (€) 1 242 359

Project WWW cbhealthaccess.eu

Lead Partner Tallinn Science Park
Tehnopool, Estonia (Tallinn)

Project Partners Tartu Biotechnology Park, Estonia (Tartu), Turku Science Park, Finland (Turku), Swedish Medtech, Sweden (Stockholm), Enixus Baltics, Latvia (Riga)



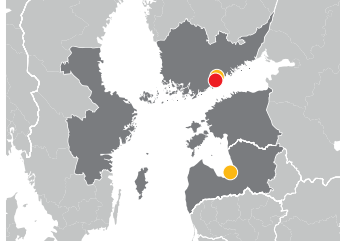
CB2East

Central Baltic Cleantech Clusters expanding to East of EU markets

The project CB2East aims at strengthening the Central Baltic Region's economic competitiveness by creating commercially targeted open innovation platforms between Latvia and Finland. The focus areas are in sustainable eco-efficiency and water expertise solution needs in North-West Russia and Central Asia. Both regions have shown notable market potential for the Finnish and Latvian SMEs but the lack of critical mass and certain capabilities have been an obstacle for successful commercial entries to the markets.

CB2East catalyses transnational innovation collaboration for clusters based on challenge-driven and smart specialization approaches. New element of the approach is the use of an inclusive model of collaboration, co-creative innovation processes including open innovation test-beds and new communication tools. The project creates combinations of the clusters complementary competences with a potential to develop specialized solutions to the target market needs. These strategic platforms support transnational clusters' intermediaries on their operational projects helping companies in their business development and fruitful commercialization of joint ideas internationally.

The project will result in four cluster co-operations exporting to new markets and a continuous and commercially successful transnational cooperation in between two countries as well as a model that can be spread to the neighbouring CB countries in the future.



Specific Objective 1.3. More exports by the Central Baltic companies to new markets

Subprogramme Central Baltic
Call Call 1 Regular projects

Duration 9/2015 - 8/2018, 36 months

Total Project Budget (€) 909 065

ERDF (€) 711 643

Lead Partner Finnish Water Forum, Finland (Helsinki)

LP Contact www.finnishwaterforum.fi

Project Partners Green Net Finland, Finland (Vantaa), Latvian Biotechnology association, Latvia (Riga)

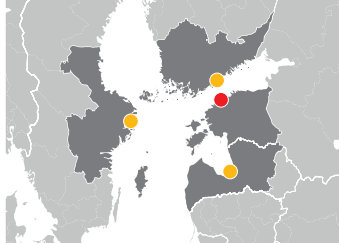
CBEwB

Central Baltic Student Enterprises without Borders

The objective of the CBEwB project is to have more entrepreneurial youth in the Central Baltic region. Until now the focus has been on local entrepreneurship education and it has been a challenge to support international activities. In the CBEwB project students take initiative in creating international student companies with students from other Central Baltic countries. Students meet, develop ideas, create and manage their companies and sell products together.

The project starts with a seminar where students get acquainted, find a common business idea and create the first EwB's. The student company partners work closely together and visit trade fairs to sell their products. The companies are closed down in a year followed by an analysis of the used methods and their outcomes, leading to further developing the model. The project activities include training also for teachers and business mentors as well as producing learning materials.

During the project at least 50 international student companies are created. Altogether this will result in better teachers and more young people with CB networks and competence in international business. At least 300 students, 80 teachers and 50 mentors participate in the project.



Specific Objective 1.2. More entrepreneurial youth

Subprogramme Central Baltic

Call Call 1 Regular projects

Duration 9/2015 - 4/2019, 44 months

Total Project Budget (€) 1 729 523

ERDF (€) 1 381 958

Lead Partner Junior Achievement Estonia, Estonia (Tallinn)

LP Contact www.ja.ee

Project Partners Junior Achievement-Young Enterprise Latvia, Latvia (Riga), Junior Achievement Finland, Finland (Helsinki), Junior Achievement Sweden, Sweden (Stockholm)



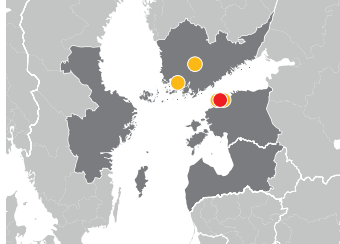
CLUSME

Chances and challenges of cluster-based marketing in mechatronics

The objective of the CLUSME project is to increase export volumes and the competitiveness of Estonian and Finnish mechanical engineering and mechatronics sector through cluster initiative and common marketing. This is done by creating preconditions for successful export to new expanding markets of Georgia, Uzbekistan, South-Africa, Brazil and Mexico.

The project will do market analysis and research, develop entering strategies, find contacts and partners in target markets, make investments to equipment needed to adapt the products to the needs of the target markets (e.g. measuring machine and digitalisation software). Activities will also include seminars presenting research outcomes and possibilities in target markets, business visits and B2B contacts in target markets.

The project will result in five entries to markets outside of Europe, where contacts will be developed with local authorities, supporting institutions, associations and companies in chosen subsectors. These contacts will be disseminated to benefit a large number of companies in the project partners' networks.



Specific Objective 1.3. More exports by the Central Baltic companies to new markets

Subprogramme Southern Finland - Estonia

Call Call 1 Regular projects

Duration 9/2015 - 8/2018, 36 months

Total Project Budget (€) 2 014 093

ERDF (€) 1 646 979

Lead Partner IMECC Ltd, Estonia (Tallinn)

LP Contact www.imecc.ee

Project Partners Association of Mechatronics, Estonia (Tallinn), Federation of Estonian Engineering Industry, Estonia (Tallinn), New Factory Ltd., Finland (Tampere), Machine Technology Center Turku Ltd., Finland (Turku)

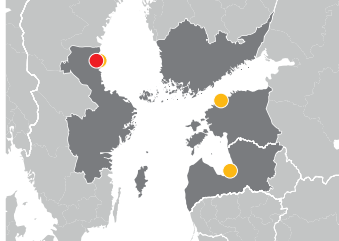
ICT Meta Cluster

Central Baltic ICT - Export Meta Cluster

The ICT SMEs within the Central Baltic countries are in a challenging situation due to a very small size of fiercely competed domestic markets making it necessary to penetrate into new markets. Through joining resources it will be possible to elevate branding, join and jointly use available resources for market studies and promotion as well as establish constellations eligible for further expansion in the new markets.

The project ICT Meta Cluster aims to create a complete value chain offering 400 ICT-oriented companies in Estonia, Latvia and Sweden resources to generate first sales of their products and services at new markets, to expand the sales within the respective countries and regions, and finally to prepare for further expansion of the business activities.

By the end of the project, the ICT Meta Cluster is a validated ecosystem for establishment and further business expansion into new markets. The participating SMEs have an access and are familiar with the target markets' export analysis, have received match-making results for their product in the target markets, have performed necessary adaptations of products and services as well as received support with export/import regulations. Finally, at least nine sales at target markets have been achieved.



Specific Objective 1.3. More exports by the Central Baltic companies to new markets

Subprogramme Central Baltic
Call Call 1 Regular projects

Duration 9/2015 - 2/2019, 42 months

Total Project Budget (€) 2 320 879

ERDF (€) 1 814 790

Lead Partner Fiber Optic Valley AB, Sweden (Hudiksvall)

LP Contact www.fiberopticvalley.com

Project Partners Acreeo, Sweden (Hudiksvall), Latvian IT Cluster, Latvia (Riga), Estonia ICT Cluster, Estonia (Tallinn)



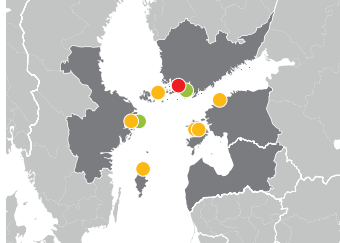
RIBS

Rolling Images in Business Startups

A common challenge in rural societies is that young people move away from their local communities in order to find work and education. By making entrepreneurship more attractive for the youth they could make a living in their local communities. The RIBS project aims at developing young people's knowledge about entrepreneurship and media literacy by engaging them in cross-border entrepreneurship courses, local and international workshops and exchange possibilities for students, teachers and coaches.

The project will organise both local and international business idea workshops to form cross-border teams based on similar business ideas. The teams will be coached in enhancing their business plan and in developing the necessary media and financial skills for the project. The teams will develop their business ideas mainly by using ICT tools but also during cross-border exchanges, under supervision of teachers and coaches.

During the project, approximately 20 joint student companies will be established. The networks of young participants created during their work with the joint student companies can become the starting point for new, creative and competitive cross-border companies in the future.



Specific Objective 1.2. More entrepreneurial youth

Subprogramme Archipelago and Islands

Call Call 1 Regular projects

Duration 9/2015 - 11/2018, 39 months

Total Project Budget (€) 1 824 556

ERDF (€) 1 396 710

Lead Partner City of Pargas (Pärnainen)

LP Contact www.pargas.fi

Project Partners Kinobuss NGO, Estonia (Tallinn), Young Voices in the Archipelago NGO, Finland (Kumlinge), Film on Gotland, Sweden (Fårösund), Film Stockholm, Sweden (Stockholm), Kuressaare City Government, Estonia (Kuressaare), Saaremaa Development Centre, Estonia (Kuressaare)

Associated Partner Värmdö municipality, Sweden (Gustavsberg), Municipality of Kimitoön, Finland (Kemiö)

SME2GO

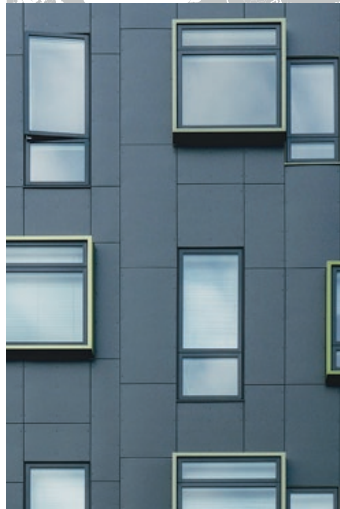
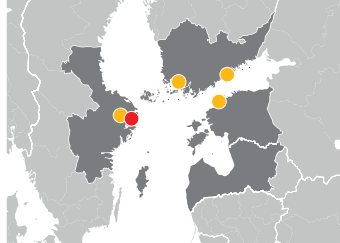
Central Baltic Region Smart City Solutions for Global Cities

For the first time in history the majority of people live in cities, and the urban population continues to grow. This has created a great need for more efficient, sustainable, and smart city solutions.

The Central Baltic region is at the forefront of the development of smart cities. In many cases the cutting-edge solutions are developed within a small or medium-sized enterprise. Unfortunately, these companies often lack knowledge and experience in doing business with emerging markets. This prevents them from offering their solutions to megacities in Asia, Africa and South America, or elsewhere.

For the coming three years, SME2GO will focus on increasing the cooperation between growth-oriented SMEs and multinational enterprises with solutions for smart cities within the region to create synergies, new cross-boarder business opportunities, and export. The participants in the project will be offered networking, international marketing and sales training, matchmaking, market intelligence, and customized support, to facilitate joint export opportunities in emerging markets.

SME2GO will form 3-5 cross-boarder business partnerships (consortia) achieving 2-3 sales during or 1-2 year period after the project has ended.



Specific Objective 1.3. More exports by the Central Baltic companies to new markets

Subprogramme Central Baltic
Call Call 1 Regular projects

Duration 10/2015 - 9/2018, 36 months

Total Project Budget (€) 1 839 996
ERDF (€) 1 419 997

Lead Partner SISP Swedish Incubators & Science Parks, Sweden (Stockholm)

LP Contact www.sisp.se

Project Partners Tallinn Science Park
Tehnopool, Estonia (Tallinn), Turku Science Park Ltd, Finland (Turku), Västerås Science Park AB, Sweden (Västerås), Posintra Ltd, Finland (Porvoo)



Springboard

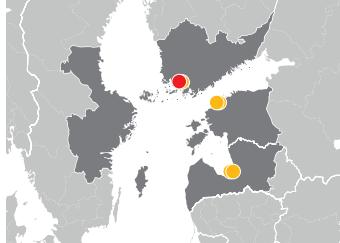
Central Baltic

Startup Springboard

A cross-border business acceleration process is needed to be able to compete with regions with stronger startup scene. The Springboard project supports the development of new joint and co-operating knowledge-intensive startups springing up of the shared smart specialization strengths of the participating regions (ICT, cleantech and healthtech).

The project provides its target group a supported path towards entrepreneurship by implementing three joint 10-week business acceleration programs and coaching of the most potential teams. Targeted B2B matchmaking activities will also be organized in order to support already established early-stage companies. By combining expertise across borders, it is easier to find potential business ideas and to establish globally competitive joint teams with versatile know-how and experience.

The main result of the Springboard project is an increased capacity to produce international startups in the Central Baltic region, which includes the enhanced support in the process of turning university-based business ideas to viable businesses and fostering of cross-border cooperation in the early stage of business development. The Springboard will achieve 15 new joint or co-operating knowledge intensive Central Baltic companies aiming for rapid growth.



Specific Objective 1.1. New Central Baltic knowledge intensive companies
Subprogramme Central Baltic
Call Call 1 Regular projects

Duration 11/2015 - 1/2018, 27 months
Total Project Budget (€) 1 338 503
ERDF (€) 1 078 053
Project WWW
www.turku.fi/en/cbspringboard

Lead Partner Turku Science Park Ltd, Finland (Turku)

Project Partners University of Turku, Finland (Turku), Tallinn Science Park Tehnopol, Estonia (Tallinn), Tallinn University of Technology, Estonia (Tallinn), Latvia Technology Park, Latvia (Riga), Riga Technical University, Latvia (Riga)



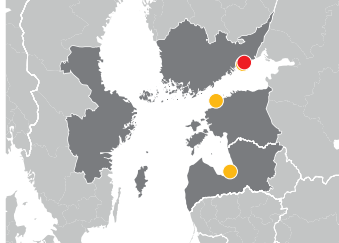
STARPABS

Startup Passion in Baltic Sea Region

While it is widely acknowledged that an entrepreneurial career path is a viable avenue for employment in the times of economic restructuring, many Central Baltic regions have limited resources and knowhow to support the creation of cross-border companies. The project STARPABS aims at raising awareness and interest towards entrepreneurship among university students and helping them to build international teams around their business ideas. The project will also attract new entrepreneurial talent into the Central Baltic region as well as create a model for supporting creation of student-based international companies.

The project combines competences of higher education programmes, student populations and enterprise development agencies to encourage the best students to take up international entrepreneurship. This is done by organising e.g. Massive Open Online Courses (MOOC) of entrepreneurship, hackathons and business idea development workshops for students. The training process is based on proven business development models and tools including a business idea competition.

By the end of the project 10-15 new knowledge intensive cross-border companies and 5-6 cooperation agreements have been established. Additionally, wide idea of a student-based entrepreneurial ecosystem is disseminated and a competence and network model is created for supporting the creation and growth of knowledge-intensive cross-border companies in cooperation with universities, enterprise development agencies and private actors.



Specific Objective 1.1. New Central Baltic knowledge intensive companies

Subprogramme Central Baltic

Call Call 1 Regular projects

Duration 9/2015 - 8/2019, 48 months

Total Project Budget (€) 1 761 262

ERDF (€) 1 392 073

Project WWW startupp passion.eu

Lead Partner Cursor Oy, Kotka-Hamina Regional Development Company, Finland (Kotka)

Project Partners Tallinn University, Estonia (Tallinn), Kymenlaakso University of Applied Sciences, Finland (Kotka), Stockholm School of Economics in Riga, Latvia (Riga)



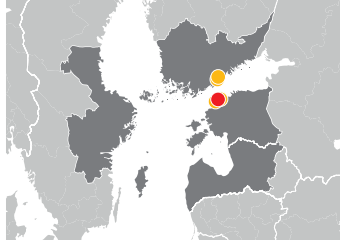
TALSINKI

Talsinki Metropolitan Incubation

The Talsinki Metropolitan Incubation project aims to facilitate the creation of 30 new joint Central Baltic knowledge intensive companies and co-operation between them in the Tallinn-Helsinki area through a network of partners who develop and implement an integrated incubation service. The co-operation addresses four business verticals: ICT, healthtech, cleantech and creative industries.

A shared process for incubating and accelerating new companies will be developed around a common model of start-up development phases. The project will map existing programmes over these phases, compare and benchmark specific services provided by the partners and assess the needs of new knowledge intensive companies for new services and benefits of cross-border collaboration. The assessment will be followed by establishing relevant procedures to develop cross-border teams. The target is to serve new entrepreneurs significantly better than through individual offerings.

By attracting more than 80 startup cofounders to the project activities the project will end up creating a total of 30 knowledge intensive companies during the project duration of three years.



Specific Objective 1.1. New Central Baltic knowledge intensive companies

Subprogramme Southern Finland - Estonia

Call Call 1 Regular projects

Duration 10/2015 - 9/2018, 36 months

Total Project Budget (€) 1 434 712

ERDF (€) 1 160 133

Lead Partner Tallinn Science Park Tehnopol, Estonia (Tallinn)

LP Contact www.tehnopol.ee

Project Partners Tallinn Business Incubators, Estonia (Tallinn), Aalto Start-Up Center, Finland (Helsinki), Spinno Enterprise Center, Finland (Vantaa), Estonian Business Angels Association, Estonia (Tallinn)

SPARKS

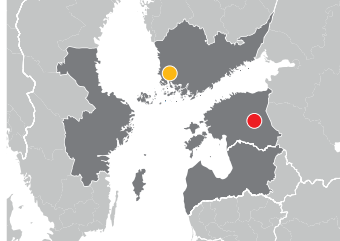
Sparkling Startups

The vision of this small project is to establish a common methodology and a cross-border cooperation culture that will result in more joint and co-operating companies in the near future. This will be done using a range of methods, including mentoring, staff exchange, study visits and matchmaking. These activities will be extended also to companies who have already entered the platforms in both Turku and Tartu to use them as pilots for the methods that will be created in this project.

This project will implement joint practices and structures for cross-border co-operation between Finnish and Estonian start-ups and potential entrepreneurs. Turku Science Park has just recently kick-started its renovated, innovative start-up activities via its SparkUp society and Tartu is at the moment setting up its own similar program. This is the perfect moment to formulate joint practices, methods and structures for matching potential SMEs from both regions.

As a result of this project we aim to create 6 new joint and/or cooperating companies and to support their development through the early phases of the startup life-cycle by providing jointly developed business support activities by Tartu and Turku Science Parks.

We dedicate our efforts within SPARKS project foremost to establish 1 to 3 new joint companies. We expect about 80 SMEs in total to benefit from the SPARKS project. Additionally around 10 other business support organizations and universities will both contribute and benefit to/from SPARKS initiative with know-how.



Specific Objective 1.1. New Central Baltic knowledge intensive companies

Subprogramme Southern Finland - Estonia

Call Call 2 Small projects

Duration 3/2016 - 2/2018

Total Project Budget (€) 229 591

ERDF 181 512

Lead Partner Tartu Science Park Foundation, Estonia (Tartu)

LP Contact www.teaduspark.ee

Project Partners Turku Science Park Ltd, Finland (Turku)

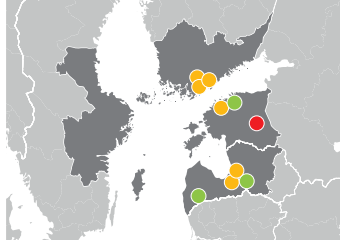


CAITO

Meta cluster for attracting the Japanese tourism market

In the Central Baltic region, tourist visits from neighbouring countries have declined in some areas. To face this challenge, clusters with skills, knowledge and the understanding required to enter new markets are needed and working with the Japanese market will create more opportunities to increase tourism in the region. Currently, potential exists in rural tourism for the development of clusters, products and services especially in terms of product quality and demand. This can be extended to the Japanese market in the tourism sector since Japanese tourists have expressed interest in visiting rural areas to experience the wide range of natural and cultural heritage products to be found in our countryside.

The aim of the project is shaping a rural tourism high capacity meta-cluster to access the Japanese market, enable its structure and operations, and present a significant rural tourism product for Japanese travellers. The idea is to build Japanese market expertise in order to create focused marketing and products suited to the interests and expectations of Japanese tourists to attract them in greater numbers to visit the Central Baltic region.



Specific Objective 1.3. More exports by the Central Baltic companies to new markets

Subprogramme Central Baltic
Call Call 2 Regular projects

Duration 7/2016 - 3/2020

Total Project Budget (€) 1 413 735

ERDF 1 141 858

Project WWW

balticsea.countryholidays.info

Lead Partner Estonian University of Life Sciences

LP Contact www.emu.ee

Project Partners NGO Estonian Rural Tourism, Estonia (Tallinn), Latvia University of Agriculture, Latvia (Jelgava), Latvian Country Tourism Association "Lauku celotajs", Latvia (Riga), Laurea University of Applied Sciences, Finland (Vantaa), Länsi-Uudenmaan Lumo Matkailu Ltd, Finland (Lohja), University of Helsinki Ruralia Institute, Finland (Helsinki)

Associated Partners Association of Latvian travel agents and tour operators, Latvia (Riga), Estonian Travel and Tourism Association, Estonia (Tallinn), Society Zemgale tourism association, Latvia (Bauska)

Archipelago Partnerships

Archipelago - strategic partnerships for business development

The project Archipelago Business Development, also known as Archipelago business development, aims at developing new business models in the archipelago by forming partnerships between entrepreneurs and start-up companies in Finland (including Åland Islands) and Sweden. The project also aims at exchanging knowledge between existing businesses and new potential entrepreneurs.

Existing businesses' start-up expertise, paired with coaching techniques and the "Loopa"-method models for cross-border business development, will be used to educate and support entrepreneurs and business-counselling services. Students will be involved in co-coaching companies, internships, projects and thesis-work. The project will also organise international seminars to stimulate networking, knowledge-sharing and business development involving key stakeholders. The use of digital technology will result in the creation of platforms and applications to support cooperation in partnerships, business activities, sales channels and recruitment pools.

The target is to develop 10 new business models for existing companies through diversification, new seasonal solutions or cross-border cooperation. A minimum of 60 existing SMEs will take part in the development process and we expect to trigger the creation of five new startup businesses.



Specific Objective 1.1. New Central Baltic knowledge intensive companies

Subprogramme Archipelago and Islands

Call Call 2 Regular projects

Duration 10/2016 - 9/2019

Total Project Budget (€) 1 638 511

ERDF 1 228 883

Project WWW

www.archipelagobusiness.eu

Lead Partner Novia University of Applied Sciences, Finland (Ekenäs)

LP Contact www.novia.fi

Project Partners Södertörn University, Sweden (Huddinge), Åbo Akademi University, Finland (Åbo), Drivhuset Sweden, Sweden (Stockholm)



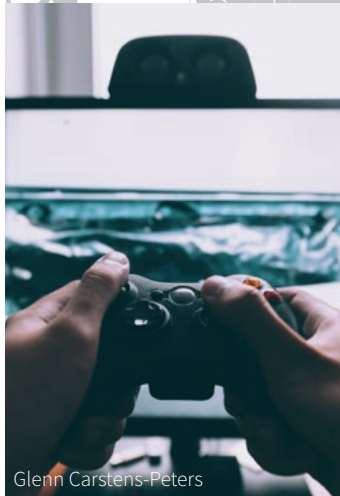
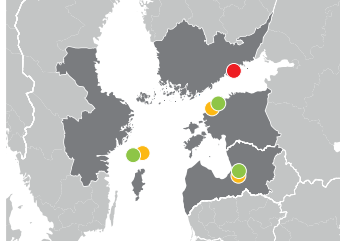
CB 4 GameCamps

Central Baltic Game Camps - development of new type Gaming sector's joint ventures accelerator for CBR

The CB region is characterized by significant differences in economic development. Regions of Sweden and Finland belong to the group of the most developed regions within EU. On the other hand, Estonia and Latvia show now the fastest growth of GDP in the EU. There is a strong potential and a need of further integration of CB countries' economies via new CB joint business development activities, cluster cooperation and further integration of labour market. New SMEs are needed to complement business structures and enhance the economic situation in the EU.

This project is focused on the creation of joint cross-border companies and seeks to enhance and strengthen the CB region as a globally competitive hub for the cross-border gaming industry's start-ups and companies. Planned cross-border activities help to identify and provide the missing links to the CB gaming sector ecosystem at the emerging phase of global gaming industry and to enhance its value in the global ecosystem. Cooperation in this new innovative sector is crucial to gain critical mass for the industry in the CB region and to increase the number of SMEs and jobs.

The project contributes in solving common challenges in the CB region's gaming industry companies by identifying their common interests and needs for joint development, by supporting the creation of joint cross-border companies and their further integration and cooperation, and by developing a new type of gaming sector's joint venture accelerator for the CB region. Specifically designed training and matchmaking events called Game Camps, will be organized in all participating countries. During the project at least 10 new joint cross-border companies will be formed and a total of 240 people will participate in the Game Camps organized in Finland, Estonia, Latvia and Sweden. Also, an acceleration program is made for creating and mentoring new cross-border game startups



Glenn Carstens-Peters

Specific Objective 1.1. New Central Baltic knowledge intensive companies
Subprogramme Central Baltic
Call Call 2 Regular projects

Duration 9/2016 - 1/2020
Total Project Budget (€) 1 582 352
ERDF 1 244 205

Lead Partner Cursor Oy, Finland (Kotka)
LP Contact www.cursor.fi

Project Partners Estonian Digital Centre, Estonia (Tallinn), Latvian Technological Center, foundation, Latvia (Riga), Science Park Gotland, Sweden (Visby)

Associated Partners Uppsala University, Department of Game Design, Sweden (Visby), Tallinn University Baltic Film and Media School, Estonia (Tallinn), Latvian Association of Technology Parks, Centers and Business Incubators, Latvia (Riga)

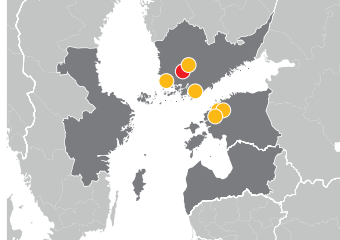
FINEEX Music

Boosting music industry exports to Japan through cross-sectoral collaboration

The FINEEX Music project facilitates the joint development of cross-sectoral services and products and opening of new export opportunities in Japan for the Finnish and Estonian music industry and for other sectors for which export cooperation with the music industry can bring added value.

Japan is a highly promising market for the Nordic-Baltic culture and music. Much of the music industry export potential, however, remains untapped. At the same time Finnish and Estonian markets have experienced a downturn in the music industry sales. Finland and Estonia are small countries with limited capacity, resources and public financial support for music export. A cross-border cluster and joint sales efforts would strongly benefit the music industry export to Japan. The project approach is based on the cross-sectoral co-creation and cooperation between the music sector and other business sectors such as design, gaming, film and high-tech.

The project utilises well-known annual music industry networking events (Music & Media Finland and Tallinn Music Week) as matchmaking and showcase platforms as well as new business-university co-creation combining companies, music experts and students. A music export accelerator programme including the co-creation of new marketing concepts, design of demos and organisation of sales trips to Japan will be developed and piloted to facilitate the cross-sectoral value chain between the music industry and companies from other sectors, and to boost their sales in Japan.



Specific Objective 1.3. More exports by the Central Baltic companies to new markets

Subprogramme Southern Finland - Estonia

Call Call 2 Regular projects

Duration 8/2016 - 7/2019

Total Project Budget (€) 1 159 668

ERDF 906 607

Project WWW finestsounds.eu

Lead Partner Tampere University of Applied Sciences Ltd., Finland (Tampere)

LP Contact www.tamk.fi/web/tamk/mediapolis

Project Partners Music & Media Finland, Finland (Tampere), Humak - Finnish University of Applied Sciences and Arts, Finland (Turku), Tallinn Music Week, Estonia (Tallinn), Tallinn University, Estonia (Tallinn), Music Finland, Finland (Helsinki), Music Estonia, Estonia (Tallinn)

NORTH STAR FILM ALLIANCE

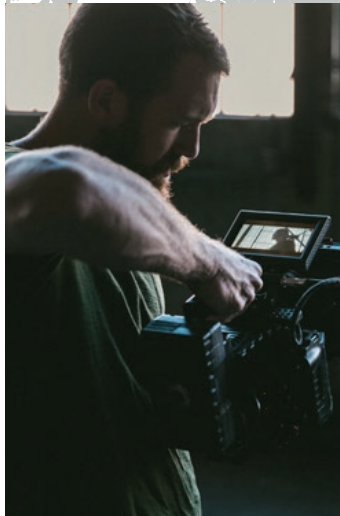
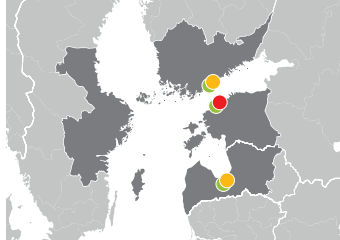
NNFA

North Star Film Alliance

The main aim of the cross-border cooperation project “North Star Film Alliance” is to substantially increase exports within the film production sector in Estonia, Latvia and Finland. The objective is that by the year of 2021 the region has attracted 25% more foreign film productions and that at least 65 SMEs from the region’s film production sector have benefited from servicing an international production. Production in the context of this project stands for filming movies, TV series and advertisements in the Central Baltic region.

For a coherent and productive approach, the project activities have been divided into three interrelated actions - (1) benchmarking the current situation in the region’s film production sector and global future trends of film production, (2) developing a comprehensive market strategy and finally (3) efficiently executing the market strategy. The underlying activity through all three phases is the cross-border cooperation between project partners and associated partners.

For reaching the set objective it is crucial to address the current need of developing and introducing the region worldwide as an acknowledged film area providing an excellent and wide array of high standards services. Combining the advantages and strengths that the three partner countries have will result in a much bigger regional impact. The volumes that can be reached by means of this cooperation are far greater than what each country separately could ever achieve. Instead of competing and duplicating investments these countries will work together to resolve joint problems under one purpose - to attract vast productions from new markets to substantially increase SMEs export in the region’s film production sector.



Specific Objective 1.3. More exports by the Central Baltic companies to new markets

Subprogramme Central Baltic
Call Call 3 Regular projects

Duration 05/2018 - 02/2021

Total Project Budget (€) 2 013 453

ERDF 1 580 613

Project WWW

www.northstarfilmalliance.com

Lead Partner Foundation Estonian Film Production Export Alliance, Estonia

Project Partners Film Service Producers Association of Latvia, Latvia (Riga), City of Helsinki, Finland

Associated Partners

The Finnish Funding Agency for Innovation, Finland (Helsinki), Estonian Film Institute, Estonia (Tallinn), National Film Centre of Latvia (Riga)



DigiYouth

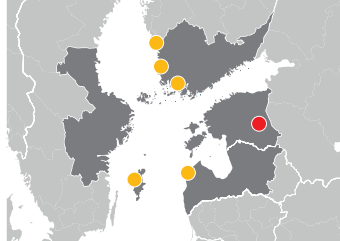
Enhancing youth entrepreneurship with cross-border startups and digital technologies

DigiYouth project aims to develop entrepreneurship and cross-border cooperation skills of Estonian, Finnish, Latvian and Swedish youngsters (aged 14–19) by supporting the creation of start-up type student companies focused on digital products, services and solutions.

From each country 2 to 5 schools, teacher teams and a network of mentors will be engaged. Student companies generate IDEAs and develop business plans and their product/service into a PROTOTYPES. Finally they engage in marketing and SALES. by participating in national and regional hackathons, robotics, start-up, business idea and innovation competitions etc. they get inspired by existing regional competence.

A clear focus on digital technologies enables to devote more time to product development and raise awareness to the multitude of entrepreneurial opportunities and career choices related to digital technologies. Integration of project activities into everyday school work brings education closer to working life and the needs of the economy. It also saves students' time, provides teachers with valuable teamwork experiences and ensures sustainability.

During the project, 40 cross-border student companies will be established to build connections for the future. 220 pupils from 4 Central Baltic countries will gain experience in international business communication and the startup world. 45 teachers and mentors will be trained to mentor cross-border student companies, a cross-border network of schools and partners (entrepreneurs, incubators, startup communities) will be created to facilitate and support the work of student companies, and a 3-semester study module on digital entrepreneurship for general education will be developed and tested.



Specific Objective 1.2. More entrepreneurial youth

Subprogramme Central Baltic
Call Call 3 Regular projects

Duration 01/2018 - 04/2021

Total Project Budget (€) 1 596 477

ERDF 1 252 096

Lead Partner

University of Tartu, Estonia (Tartu)

LP Contact www.ut.ee

Project Partners University of Turku, Finland (Turku), Merikarvia Upper High School, Finland (Merikarvia), Rauma Lyceum, Finland (Rauma), Ventspils City Council Board of Education, Latvia (Ventspils), Uppsala University, Sweden (Visby)



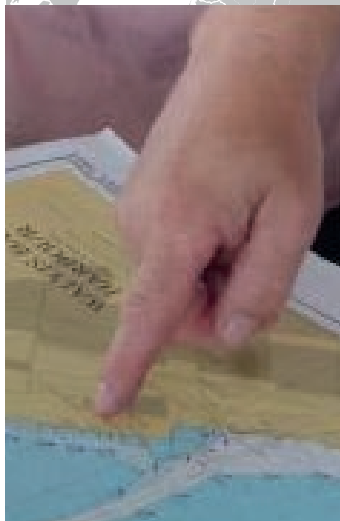
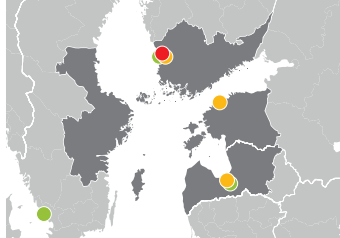
SME Aisle

Exports of clusters of CB economic strengths shipbuilding, maritime, renewable energy, automation and ICT to Namibia as a stable point of entry to the Southern African markets

CB region companies in Finland incl. Åland, Estonia, Latvia, Sweden have strong competences in maritime clusters (shipbuilding, maritime& logistics, renewable energy, automation, ICT). However, many CB companies are too small and their expertise is very limited/scattered to enable export activities on the fast growing Southern African market (62% of global population in Africa by 2050). There are vast export possibilities for an adaptable, scalable product and services concept for CB region companies as clusters to these markets. The customers expect concept solutions for products and services.

The main objective is to increase CB's SME's sales by developing a joint concept that uses Namibia as a safe entry point to coastal Southern African (SA) countries (e.g. South Africa, Angola, Mozambique). All SME Aisle partners are already operating actively within safe, smart and environmentally friendly maritime clusters to promote export from Finland, Latvia, Estonia and Sweden. The lead partner has deep expertise and consistent connections in Namibia's business environment since 2012. The project activities are detailed market analysis a feasibility study, development and adaptation of concepts for products and services with a capacity building of 20 selected pilot companies from CB. The customers in SA are public operators, PPPs and private companies.

The number of cluster planned to be created in the framework of the project is five: 1) metacluster between the countries and clusters with compatible products and services: "CB maritime cluster"; 2) infrastructure (machinery, renewable energy, automation, ICT solutions) in ports and hinterlands; 3) ship building, retrofitting; 4) certified training (maritime, crewing, renewable energy, automation, ICT); 5) expert services on safety, surveillance, environment and custom clearance procedures etc.. Min. 15 companies have achieved sales in Southern African countries by the end of the project.



Specific Objective 1.3. More exports by the Central Baltic companies to new markets

Subprogramme Central Baltic
Call Call 3 Regular projects

Duration 03/2018 - 08/2021

Total Project Budget (€) 1 731 850

ERDF 1 358 177

Lead Partner Satakunta University of Applied Sciences, Finland (Pori)

LP Contact www.samk.fi

Project Partners Prizztech Ltd. (Pori), Latvian Chamber of Commerce and Industry, Latvia (Riga), Association of Mechanical Engineering and Metalworking Industries of Latvia (Riga), Tallinn University of Technology Estonia (Tallinn)

Associated Partners Satakunta Chamber of Commerce, Finland (Pori), Swedish Windpower Association, Sweden (Falkenberg)

IHMEC

Opening indoor hygiene SME's exports to Middle East construction markets

Novel solutions are desperately needed to prevent the global spreading of serious infections. IHMEC-project combines existing offerings to tailored indoor hygiene (IH) solutions and exports them to Middle-Eastern (ME) markets. The ME climate forces people to remain indoors and hence, large crowds meeting daily at e.g. shopping malls, airports, schools, and hospitals are at risk of catching infections. Although ME market holds lucrative business opportunities, they cannot be utilized by a single company or cluster. All actors involved in planning, designing, building, and furnishing indoor spaces are needed to reach effective IH results. However, most of the business actors in IH field are small or middle sized (SMEs) and lack the necessary knowledge and resources to export to host markets of considerable cultural and physical distance.

IHMEC offers a combination of local, indoor hygiene, and marketing capabilities. IHMEC creates and exports joint IH solutions of Central Baltic (CB) area SMEs into Middle-East construction markets using indoor hygiene as a competitive edge. IHMEC integrates relevant clusters from Sweden, Estonia and Finland into a meta-cluster; compiles a database on IH research, technology, and the target markets; develops, tests & tailors IH solutions; designs viable networked business models, market entry strategies & sales operations; as well as involves experts from the host markets for CB companies to enter the markets and close sales. The aim is to target customer segments with which long-term business relationships can be developed.

IHMEC novelty highlights: 1) Integrated CB region meta-cluster on indoor hygiene (IH), 2) Up-to-date knowledge data-base on IH technology and reliable test results, 3) Novel and tailored IH guidelines and IH solutions that fit the target markets, 4) Networked business models that support the export of the IH solutions, 5) Tailored market entry process to ME markets resulting in 12 export sales.



Specific Objective 1.3. More exports by the Central Baltic companies to new markets

Subprogramme Central Baltic

Call Call 3 Regular projects

Duration 03/2018 - 02/2021

Total Project Budget (€) 2 176 372

ERDF 1 662 407

Lead Partner

University of Turku, Finland (Turku)

LP Contact www.utu.fi

Project Partners Satakunta University of Applied Sciences, Finland (Pori), Royal Institute of Technology, Sweden (Stockholm), Uppsala University, Sweden (Uppsala), Foundation Viljandi County Development Centre, Estonia (Viljandi), Estonian Woodhouse Association, Estonia (Tallinn)

Associated Partners Finnish Federation of Hospital Engineering, Finland (Tampere)



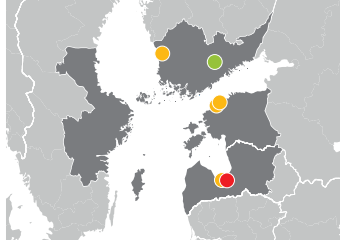
LEF network to China

Creation of export support co-operation network to China in Latvia-Estonia-Finland cross-border region

China's market is growing steadily and demands wooden products. Based on expert's research, the wood sector's export from Finland to China has grown up to 50% comparing 2015 with 2014. This shows to Estonian and Latvian companies, that the wood sector export to China can be a real opportunity for them. All three countries are competitive in this sector. Their common challenge is find ways to export wood interior design products to China. The wood interior design industry consists of e.g. wood building materials, furniture, wooden doors and windows, wooden houses.

Through the project, SMEs will have the opportunity to be involved directly in the main project activities in China. Knowledge transfer, market research, visiting and participating with joint-expo booth, contact matchmaking and trade missions are a first-class opportunity for developing exports to China. The project partners from Latvia, Estonia and Finland have contacts in China and experience in export promotion activities.

The project results will be: the creation of practical trainings, market research - with long term impact. Moreover, 19 companies from all partner countries will be developing real exports through contact matchmaking events, expo visits, expo joint- booth and trade missions. The project beneficiaries are wood interior design entrepreneurs from Latvia, Estonia and Finland.



Specific Objective 1.3. More exports by the Central Baltic companies to new markets

Subprogramme Central Baltic
Call Call 3 Regular projects

Duration 04/2018 - 03/2021

Total Project Budget (€) 1 178 072

ERDF 919 592

Lead Partner Latvian Chamber of Commerce and Industry, Latvia (Riga)

LP Contact www.chamber.lv

Project Partners Satakunta University of Applied Sciences, Finland (Pori), Estonian Chamber of Commerce and Industry, Estonia (Tallinn), Latvian Wood Construction Cluster, Latvia (Jūrmala), Estonian Woodhouse Association, Estonia (Tallinn)

Associated Partners The Finnish Forest Centre, Finland (Lahti)

Priority 2

Sustainable use of common resources

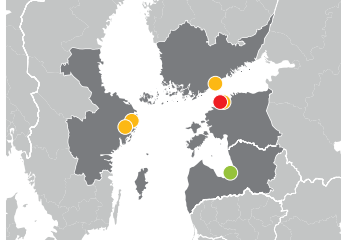
SmartZoos

Cross-border services for creative adventure learning in the zoos of the Central Baltic Region

The main objective of the SmartZoos project is to integrate the zoos of the CB region to form a joint tourist attraction through developing, implementing and joint marketing of a cross-border service package of creative adventure learning with mobile devices (SmartZoo service package).

The project activities include the service package being designed, developed, piloted among 100 visitors of the zoos and jointly marketed by the partner zoos in Estonia, Sweden and Finland. The service package will include interactive location-based assignments, possibilities for challenging other visitors of the zoos and organising adventure games, challenges and tournaments.

The new service package attracts more visitors to the region and therefore fosters growth in economic activity and enhances development of other business activities of the region. The target values are set at 6000 more visitors in the participating zoos during the project and 50 000 more three years after the project.



Specific Objective 2.1. Natural and cultural resources developed into sustainable tourist attractions

Subprogramme Central Baltic

Call Call 1 Regular projects

Duration 9/2015 - 8/2018, 36 months

Total Project Budget (€) 627 680

ERDF (€) 497 192

Project WWW smartzoos.eu

Lead Partner Tallinn University, Estonia (Tallinn)

Project Partners Tallinn Zoological Gardens, Estonia (Tallinn), Skansen Open-air museum and Zoo, Sweden (Stockholm), Helsinki Zoo, Finland (Helsinki), Södertörn University, Sweden (Huddinge)

Associated Partner Riga Zoo, Latvia (Riga)

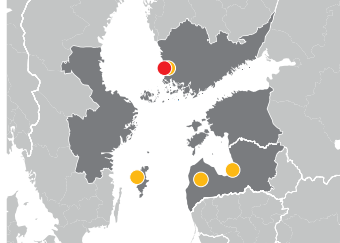
LiviHeri

Living with Cultural Heritage

The goal of the project LiviHeri is to learn how to live, maintain and cherish a historical town while preserving its characteristic environment and liveability. The project builds on a joint interest based on the recognition of similarities and differences between the participating towns of Rauma (Finland), Visby (Sweden), Kuldīga and Aizpute (Latvia).

The project develops thematically joint tourist attractions based on cultural and natural resources as well as thematically and periodically joint tourist products. The participating towns will build joint platforms for communication in social media enhancing simultaneous activities, shared experiences and crowd-sourced innovations. The activities will be done via joint learning process with benchmarking visits, local activities and sharing the local skills and knowledge hand-by-hand in workshops as well as digitally in social media.

The project will produce three new joint tourist packages, two new tourist attractions and three new identification and awareness raising packages.



Specific Objective 2.1. Natural and cultural resources developed into sustainable tourist attractions
Subprogramme Central Baltic
Call Call 1 Regular projects

Duration 9/2015 - 11/2018, 39 months
Total Project Budget (€) 593 073
ERDF (€) 467 778
Project WWW liviheri.wordpress.com

Lead Partner Rauma Town, Finland (Rauma)

Project Partners Kuldīga District Council, Latvia (Kurzeme), The residencies and workshop centre SERDE, Latvia (Aizpute), University of Turku, Department of Teacher Education, Rauma, Finland (Rauma), Gotland Region, Sweden (Visby)

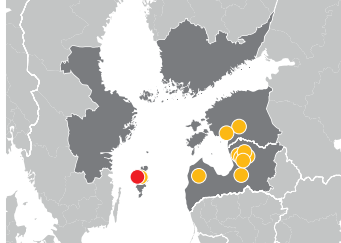
HANSA

Hanseatic Approach to New Sustainable Alliances

Cross-border cooperation is the only way to give impact for small destinations on the international tourism market. In the HANSA project, the hanseatic heritage will be developed for its great cultural value from three perspectives: the local, the national and the international. On the local level the existing attractions are made known to a broader public. The national perspective aims at bringing cities and their attractions together to strengthen the national tourism product and offer interesting packages. Finally, the international perspective aims at development of cross-border tourism packages.

The project will do branding activities, create materials, and disseminate information online and via tourism organisations and info centres promoting the hanseatic history as well as the Baltic Sea region as an attractive place to see and learn more about. The project will also strive for linking the local attractions to a wider European context, thus supporting the label of the Hansa as certified Cultural Route of the Council of Europe.

The project outcomes will include more tourism packages based on cross-border cooperation, more visitors to the destinations, a prolonged tourism season as cultural tourism is all-year-round tourism and improved economy including more jobs.



Specific Objective 2.1. Natural and cultural resources developed into sustainable tourist attractions
Subprogramme Central Baltic
Call Call 1 Regular projects

Duration 10/2015 - 12/2018
Total Project Budget (€) 2 180 939
ERDF (€) 1 775 573

Lead Partner Inspiration Gotland, Sweden (Visby)
LP Contact www.gotland.com

Project Partners Region Gotland, Sweden (Visby), Pärnu City Government, Estonia (Pärnu), Viljandi Town Government, Estonia (Viljandi), Cesis Culture and Tourism Center, CCTC, Latvia (Cesis), Koknese Local Municipality, Latvia (Koknese), Limbazi municipality, Latvia (Limbazi), Pargauja Municipality, Latvia (Pargaujas novads), Valmiera City Council, Latvia (Valmiera), Kuldīga Municipality, Latvia (Kuldīga), Vidzeme Planning Region, Latvia (Cesis)



Lights On!

Lights On!

The Estonian and Finnish culture have been in a constant interaction since prehistoric time. There are historical key sites on both sides of the Gulf of Finland, from where the areas have been reigned or the control of them have been contested. At present many of these sites are undeveloped and unknown as tourist attractions. The Lights On! sites have a high potential to become attractive tourist destinations.

The Lights On! project will design and package eight historical sites into attractive tourist attractions, by improving visitor experience, on-site services, creating joint marketing tools and developing new creative products. Infrastructure will be developed for improving visitor experience and also to improve sustainability by e.g. protecting vulnerable areas from visitor flows. Cross-border cooperation of educational institutes brings in new kind of expertise in cultural management and creative entrepreneurship. New products will be developed in cooperation with local entrepreneurs by using innovative service designing concepts.

Creating attractive new products and new marketing tools will increase visitor numbers on sites, attract new visitor groups and attract visitors to move between the sites. When local communities start benefitting from the sites and participate in project events their awareness of the historical and natural values will rise. The project will enlighten the history of the North-Eastern Baltic Sea.

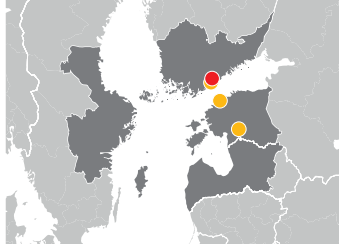


Photo: Elias Lahtinen



Specific Objective 2.1. Natural and cultural resources developed into sustainable tourist attractions
Subprogramme Central Baltic
Call Call 1 Regular projects

Duration 9/2015 - 12/2018
Total Project Budget (€) 1 861 669
ERDF (€) 1 466 852
Project WWW
www.metsa.fi/web/en/lightson

Lead Partner Metsähallitus, Parks & Wildlife Finland, Finland (Vantaa)

Project Partners State Forest Management Centre, Estonia (Tallinn), Humak- Finnish University of Applied Sciences and Arts, Finland (Helsinki), University of Tartu Viljandi Culture Academy, Estonia (Viljandi)



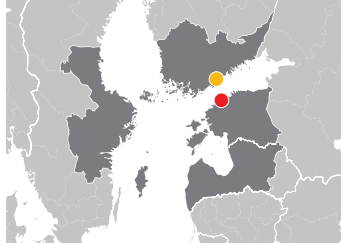
NATTOURS

Sustainable urban nature routes using new IT solutions

The big cities around the Baltic Sea are mainly well known for their built and historical districts but the cities can also boast about the biodiversity richness and high value of nature in urban areas. Most of these urban nature areas are undeservingly poorly recognized even by the local inhabitants, not to mention tourists. The objectives of the NATTOURS project are to improve public recognition of natural tourist attractions in Helsinki and Tallinn and to develop joint tourist attractions and products for sustainable nature tourism between the cities.

The project will study visitor flows, biodiversity and ecosystem services to gather data needed for the creation of new nature attractions, build the platform for a web portal and a mobile application and market the new possibilities through tourism info centres.

By the end of the project a new common web portal and mobile application for nature tourism and education in Helsinki and Tallinn will be in use, including all urban nature areas for observing, learning about and enjoying nature. New sustainable nature attractions in good nature observation areas in Helsinki and in Tallinn will be created by building e.g. boardwalks, bird-watching towers and information boards. The disabled and elderly people are taken into special consideration when designing the attractions.



Specific Objective 2.1. Natural and cultural resources developed into sustainable tourist attractions

Subprogramme Central Baltic

Call Call 1 Regular projects

Duration 3/2016 - 10/2018

Total Project Budget (€) 1 258 573

ERDF (€) 1 003 055

Lead Partner Environment
Department of Tallinn City
Government (Tallinn)

LP Contact www.tallinn.ee/nattours

Project Partners City of Helsinki,
Finland (Helsinki), Stockholm
Environment Institute Tallinn centre,
Estonia (Tallinn)



Baltic Urban Lab

Union of the Baltic Cities

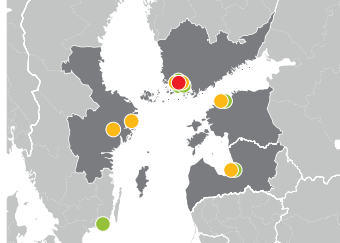
Sustainable Cities Commission

The project Baltic Urban Lab aims at improving urban planning by developing and testing new integrated models for brownfield regeneration. The project tackles an increasing need to build attractive, high-quality and sustainable urban areas that is a common challenge for all Central Baltic cities.

The project identifies and promotes already existing good practices on brownfield regeneration and facilitates exchange of experiences between planners and experts in the Central Baltic region. New planning tools and models promoting integrated management and co-creative urban planning are developed and tested on selected brownfield sites in the four project cities. The project aims for more inclusive urban planning encouraging the participation of different societal groups including citizens, NGOs, land owners, developers, businesses and other stakeholders in the planning process and maximize the use of knowledge and resources of different parties for the development of high quality living and working environment.

During the project, four cities produce concrete integrated plans and development strategies for selected brownfield sites creating base for development projects and better utilization of brownfields.

All in all, the project leads to an increased awareness of existing good examples and solutions for better management of urban brownfield areas. The project results in a more efficient interaction and cooperation among cities, land owners and developers and other relevant sectors involved in the urban development process in the participating cities and Central Baltic area.



Specific Objective 2.3. Better urban planning in the Central Baltic region
Subprogramme Central Baltic
Call Call 1 Regular projects

Duration 10/2015 - 12/2018
Total Project Budget (€) 2 200 242
ERDF (€) 1 697 128
Project WWW www.balticurbanlab.eu

Lead Partner Union of the Baltic Cities Sustainable Cities Commission
 C/O City of Turku, Finland (Turku)

Project Partners Nordregio, Sweden (Stockholm), University of Turku, Finland (Turku), Riga City Council City Development Department, Latvia (Riga), Tallinn Urban Planning department, Estonia (Tallinn), City of Turku, Finland (Turku), Municipality of Norrköping, Sweden (Norrköping)

Associated Partners Regional Council of Southwest Finland, Finland (Turku), Turku Science Park Ltd, Finland (Turku), State Regional Development Agency, VASAB Secretariat, Latvia (Riga), Turun teknologiakiinteistö Oy, Finland (Turku), BOVERKET – the Swedish National Board of Housing, Building and Planning, Sweden (Karlskrona), Tallinn University, Estonia (Tallinn)

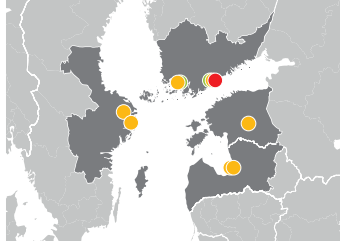
Live Baltic Campus

Campus Areas as Labs for Participative Urban Design

The project Live Baltic Campus aims at developing campuses as innovation hubs by creating better urban environment for businesses and residents and thus contributing to new job creation in the local economy. The idea is to create a working method for participative urban planning which is adopted by cities as part of their normal work.

In practice, the project brings together city planners, government representatives, campus developers and stakeholders to utilize the campuses as labs with an aim to develop plans for better integrated urban management of the Central Baltic region. The project creates a network of practitioners ensuring knowledge transfer between the northern and southern parts of the Central Baltic region. Pilot implementations conducted in each area explore participative urban planning in its different phases, from preceding the official planning, to activities supplementing the official planning and following the official process.

As the main result, project creates integrated campus development plans, as well as service concepts and implementation plans for each partner region via pilot cases co-developed with the city government and stakeholders. In addition, the project creates a platform for discussing policy objectives, exchanging best practices and improving the quality of life indicators. By creating better urban environment for businesses and residents, the project creates new jobs and has positive impacts on the local economy.



Specific Objective 2.3. Better urban planning in the Central Baltic region
Subprogramme Central Baltic
Call Call 1 Regular projects

Duration 10/2015 - 3/2018
Total Project Budget (€) 1 763 463
ERDF (€) 1 382 471
Project WWW
www.livebalticcampus.eu

Lead Partner Helsinki Metropolia
 University of Applied Sciences, Finland
 (Helsinki)

Project Partners Riga Planning Region, Latvia (Riga), University of Latvia, Latvia (Riga), Brahea Centre at the University of Turku, Finland (Turku), University of Tartu, Estonia (Tartu), Uppsala University, Sweden (Uppsala), Stockholm Resilience Centre at the Stockholm University, Sweden (Stockholm), City of Helsinki, Finland (Helsinki)

Associated Partners City of Turku, Finland (Turku), Helsinki-Uusimaa Regional Council, Finland (Helsinki)



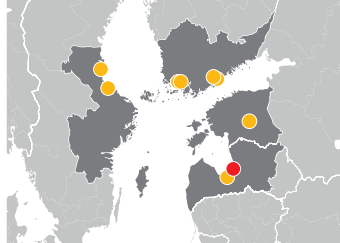
iWater

Integrated Storm Water Management

The project iWater aims at improving urban planning by developing integrated storm water management in Central Baltic cities. As the Baltic Sea region is estimated to face more frequent and heavier rainfalls, the current planning and management practices have proven to be weak in meeting these challenges. Thus, the project idea is to create higher quality, cleaner and safer urban environment and increase urban sustainability.

To reach its goals, the project develops guidelines and tools for an Integrated Storm Water Management and introduces the practices into urban planning process. For example, the project provides a platform for science-practice collaboration, aiming to find and develop common management methods, guidelines, tools and solutions for an Integrated Storm Water Management. The project establishes local support groups within all partner cities enabling municipalities to develop their solutions in close collaboration with local stakeholders and various community interest groups.

Consequently, local management practices are developed into an Integrated Storm Water Management approach which will link all the urban planning processes and stakeholders. In practice, the project partner cities adopt new programmes and approximately 35 other cities are trained to use developed methods in the region. In addition, a student competition is organised to find and develop new and innovative solutions for 7 partner cities, which result in construction or investment plans. Thus, urban planning is taken to a higher level by developing, localizing and piloting new tools in the Central Baltic region.



Specific Objective 2.3. Better urban planning in the Central Baltic region
Subprogramme Central Baltic
Call Call 1 Regular projects
Project has EUSRB Flagship status

Duration 12/2015 - 8/2018
Total Project Budget (€) 2 351 260
ERDF (€) 1 831 945
Project WWW
www.integratedstormwater.eu

Lead Partner City of Riga (Riga City Council), Latvia (Riga)

Project Partners Jelgava City Council, Latvia (Jelgava), Municipality of Söderhamn, Sweden (Södermalm), Municipality of Gävle, Sweden (Gävle), Tartu City Government, Estonia (Tartu), City of Helsinki, Finland (Helsinki), City of Turku, Finland (Turku), Union of the Baltic Cities, Commission on Environment c/o City of Turku, Finland (Turku), Aalto University, Finland (Espoo)

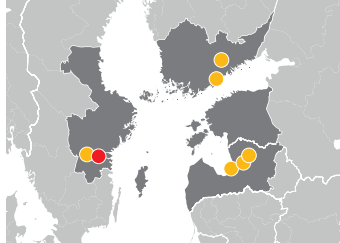
INSURE

Innovative Sustainable Remediation

The project INSURE aims at decreasing the impact of hazardous substances to the environment from contaminated sites. The idea is to decrease leakage from contaminated sites to ground and surface water to reduce the inflow of hazardous substances and toxins into the Baltic Sea.

In practice the project develops and tests cost effective and sustainable methods to contribute to more sustainable remediation. Additionally, the project focuses on finding more efficient management methods and new solutions for prioritisation, visualisation, registration and information of contaminated sites.

As a result of the project best practice for remediation and sustainable solutions is worked out for contaminants. The project contributes to the result through sustainable remediation, management methods and innovative technical tools for visualisation. Five contaminated areas in Sweden, Finland and Latvia are used as pilot areas to test different on-site remediation techniques, demonstrate their sustainability and cost effectiveness compared to present excavation of contaminated sites. Using innovative tools for visualisation of contaminated sites results in a better overview and knowledge of contaminated sites. All in all, the project creates solutions for reducing the transport of hazardous substances to the Baltic Sea.



Specific Objective 2.4. Reduced nutrients, hazardous substances and toxins inflow into the Baltic Sea

Subprogramme Central Baltic
Call Call 1 Regular projects

Duration 9/2015 - 8/2019
Total Project Budget (€) 2 463 422
ERDF (€) 1 906 751

Lead Partner County Administrative Board of Östergötland, Sweden (Linköping)

LP Contact
www.lansstyrelsen.se/ostergotland

Project Partners Latvian Environment, Geology and Meteorology Centre, Latvia (Riga), Motala Municipality, Sweden (Motala), Populus group Oy, Finland (Helsinki), Vidzeme Planning Region, Latvia (Cesis), University of Helsinki (Lahti), Valmiera City Council (Valmiera)



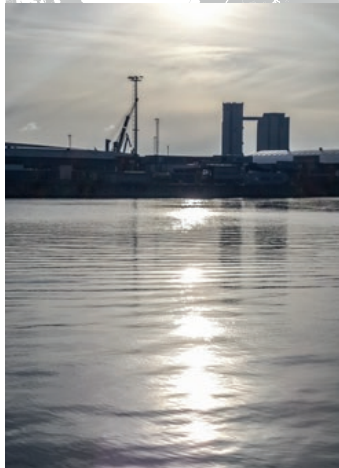
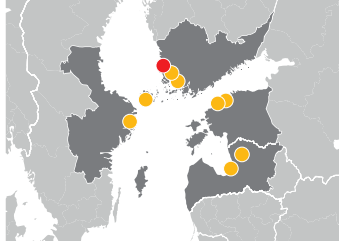
WATERCHAIN

Pilot watersheds as a practical tool to reduce the harmful inflows into the Baltic Sea

The project WATERCHAIN helps to reduce inflows of nutrients and hazardous substances to the Baltic Sea from all types of land-based sources by using pilot watersheds and environmental technology. The project tackles both highly developed intensely populated cities as well as less developed peripheral, sparsely populated rural and island regions in pilot watersheds.

The main actions are carried out in the pilot watersheds in each partner country with the practical actions targeted to sustainable impact. The sustainable use of common resources is based both on prevention of nutrients and hazardous substances inflow, as well as on water treatment of these harmful substances already entered the water bodies. During the project period, one to two sources of nutrients or hazardous substances recognized by river basin water management plans are identified and activities to reduce the substances in each pilot watershed are also initiated.

As a result of the project best practices with a common approach for sustainable development are launched in other geographical areas within the Central Baltic region and further all countries around the Baltic Sea. By year 2023, the pollution loads of nutrients and hazardous substances from targeted sources are reduced in pilot watersheds flowing into the Baltic Sea. Therefore, project results have a direct impact on the quality of living environment of local people and visitors to the area, especially on pilot watersheds.

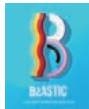


Specific Objective 2.4. Reduced nutrients, hazardous substances and toxins inflow into the Baltic Sea
Subprogramme Central Baltic
Call Call 1 Regular projects

Duration 10/2015 - 9/2018
Total Project Budget (€) 2 574 250
ERDF (€) 2 029 058
Project WWW waterchain.samk.fi

Lead Partner Satakunta University of Applied Sciences, Finland (Pori)

Project Partners Pyhäjärvi Institute, Finland (Kauttua), Turku University of Applied Sciences, Finland (Turku), KTH Royal Institute of Technology, Sweden (Stockholm), Tallinn University of Technology, Estonia (Tallinn), Estonian Environmental Research Centre, Estonia (Tallinn), Riga Technical University, Latvia (Riga), Foundation "Institute for Environmental Solutions", Latvia (Priekule county), Aland Waterwork Ltd., Finland (Jomala)



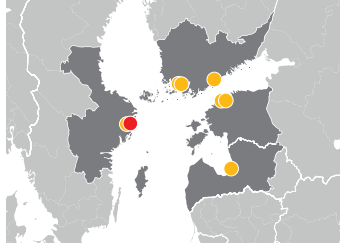
BLASTIC

Plastic waste pathways into the Baltic Sea

The BLASTIC project aims at reducing plastic waste and thereby hazardous substances inflow into the Baltic Sea by mapping and monitoring macro plastics levels in the aquatic environment.

Litter is one of the most broadly spread environmental pressures in marine environments, receiving increasing publicity and causing a lot of concern. Marine litter consists mainly of plastic and packaging material in the Central Baltic region. The project demonstrates how plastic waste in urban areas finds its ways to the Baltic Sea and becomes marine litter. Land-based sources count for most of the marine litter while rivers are major pathways feeding the sea with litter. In practice the project takes regional and national strategies into use on a local level and also produces updated local action plans. The project compiles a list of sources and pathways with recommendations that are closely linked to resource efficiency in waste and water sector. The methodology is implemented in 4 urban areas and the concept is further promoted in other areas.

As a result of the project the amount and inflow of plastic marine litter and hazardous substances are reduced in the Central Baltic area and the Baltic Sea. The outcomes that lead to overall result are approximately 100 kg less plastic in pilot areas, real data and a new methodology that suit the pilot areas as well as a general guideline with list of identified and prioritized sources with focus on plastic waste and urban areas. This project is built to expand after the project is completed, which provides conditions that ultimately contribute to the reduced hazardous substances and toxins' inflow into the Baltic Sea.



Specific Objective 2.4. Reduced nutrients, hazardous substances and toxins inflow into the Baltic Sea
Subprogramme Central Baltic
Call Call 1 Regular projects
Project has EUSRB Flagship status

Duration 1/2016 - 12/2018
Total Project Budget (€) 1 016 556
ERDF (€) 784 522

Lead Partner Keep Sweden Tidy (Stockholm)
LP Contact www.hsr.se

Project Partners Keep the Archipelago Tidy, Finland (Turku), Estonian Institute For Sustainable Development/Stockholm Environment Institute Tallinn Centre, Estonia (Tallinn), IVL Swedish Environmental Research Institute, Sweden (Stockholm), Foundation for Environmental Education Latvia, Latvia (Riga), Finnish Environment Institute, Finland (Helsinki), City of Turku, Finland (Turku), Tallinn City Government, Estonia (Tallinn)

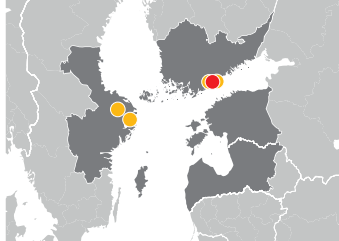
NutriTrade

Piloting a Nutrient Trading Scheme in the Central Baltic

The project NutriTrade aims at reducing nutrients in the Baltic Sea area by piloting a nutrient trading scheme in the Central Baltic region. The idea is to develop new cross-border innovative policy instruments for a cost-effective, cross-sector nutrient reduction measures in the Baltic Sea basin.

The project pilots a platform connecting nutrient removal sources with voluntary financiers willing to acquire nutrient offsets and neutralize their nutrient footprint. In the pilot scheme, several proven nutrient abatement measures including e.g. mussel farming, gypsum treatment of fields, and fishing of cyprinids are implemented, which result in phosphorus load reductions. The project develops assessment mechanisms to find and support innovative and proven nutrient reduction methods which have not yet become market-driven or integrated into governmental policies.

As a result of the project the lessons learned in the pilot scheme are used for analysing nutrient trading as a water policy instrument on a national level, and also for the analysis of a Baltic Sea wide inter-governmental nutrient trading. Based on these, NutriTrade will produce policy recommendations for the Baltic Sea region. The project is of high policy relevance for the Baltic Sea region and has been nominated as a flagship project of the EU Baltic Sea Region Strategy.



Specific Objective 2.4. Reduced nutrients, hazardous substances and toxins inflow into the Baltic Sea
Subprogramme Central Baltic
Call Call 1 Regular projects
Project has EUSRB Flagship status

Duration 9/2015 - 8/2018
Total Project Budget (€) 2 206 561
ERDF (€) 1 654 921
Project WWW nutritradebaltic.eu

Lead Partner John Nurminen Foundation (Helsinki)

Project Partners Natural Resources Institute Finland, Finland (Helsinki), University of Helsinki, Finland (Helsinki), Swedish University of Agricultural Sciences, Sweden (Uppsala), The Sustainable Seas Initiative, Sweden (Stockholm)



GreenAgri

GreenAgri

Environmentally-friendly Management of Organic Fertilizers in Agriculture

The project GreenAgri aims at reducing nutrient losses from agriculture in Baltic States by introducing and testing environmentally-friendly management of organic fertilizers. As agriculture is one of the sources of nutrients eventually entering from surface waters to Baltic Sea the project's idea is to amend the situation.

The project is a joint effort of farmers from Estonia and Latvia contributing to the improvement of eutrophication status of the Baltic Sea. During the project period 20 farmers from Estonian and Latvian pilot areas implement innovative technologies and methods in real life using their own financial resources. Experts and researchers gather and analyse nutrient runoff data and provide the farmers with information about the efficiency of different solutions demonstrating real results in reducing nutrient losses from farms. It's the first time when testing of different technologies in manor management will be arranged in wider area using financial resources and intellectual capital of Estonian/Latvian farmers, farmers organizations and research institutions.

Project main result is reduced nutrient inflows from 20 pilot farms from Estonia and Latvia to surface water entering the Baltic Sea. The sustainability is ensured through dissemination of new knowledge to approximately 300 farmers. The advisors who receive knowledge and experience during the project implementation are able to support farmers from both sides of the border. Additionally, the project results support achieving the HELCOM targets for reduction of phosphorus and nitrogen input in Gulf of Finland and Gulf of Riga, aiming at reaching good ecological and environmental status by 2021.

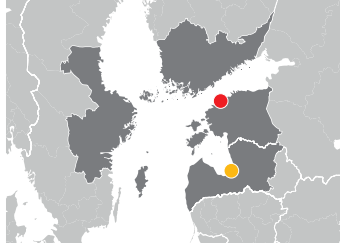


Photo: Roomet Sõrmus

Specific Objective 2.4. Reduced nutrients, hazardous substances and toxins inflow into the Baltic Sea
Subprogramme Central Baltic
Call Call 1 Regular projects

Duration 9/2018 - 8/2019
Total Project Budget (€) 859 492
ERDF (€) 730 568

Lead Partner The Estonian Chamber of Agriculture and Commerce, Estonia (Tallinn)
LP Contact www.epkk.ee

Project Partners NGO "Farmers Parliament", Latvia (Riga)

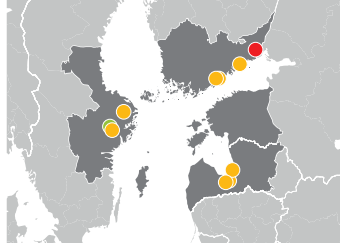
NUTRINFLOW

Practical actions for holistic drainage management for reduced nutrient inflow to Baltic Sea

The project NUTRINFLOW aims at reducing nutrient losses from agriculture to the immediate watershed and into the Baltic Sea. The idea is to take practical actions for holistic drainage management for reduced nutrient inflow to the sea. This is done by implementing, demonstrating and increasing the recognition of innovative water management measures in agricultural areas.

The project activities focus on pilot areas in Finland, Latvia and Sweden under pressure by agricultural nutrient losses. The project implements targeted demonstration investments to the fields and to drainage network in cooperation with municipalities and farmers as the main target groups. Through the investments, the project expects to reduce nutrient losses from agriculture in three priority regions.

As a result of the project the nutrient inputs to the Baltic Sea is decreased whereas the attractiveness and feasibility of holistic water management approach for agricultural catchments across the Central Baltic Region is increased. All in all, the project connects local authorities and farmers in a unique way and demonstrates a cross-sector approach in sustainable agriculture and management of ecosystem resources. The project is the first full-scale project under the EU Strategy for the Baltic Sea Region flagship project “Flow Baltic” through which it will gain region-wide visibility.



Specific Objective 2.4. Reduced nutrients, hazardous substances and toxins inflow into the Baltic Sea

Subprogramme Central Baltic
Call Call 1 Regular projects

Project has EUSRB Flagship status

Duration 9/2015 - 2/2019

Total Project Budget (€) 1 763 962

ERDF (€) 1 389 058

Project WWW flowbaltic.eu

Lead Partner ProAgria Southern Finland (Lappeenranta)

Project Partners Zemgale Planning region, Latvia (Jelgava), Union Farmers' Parliament, Latvia (Riga), Latvia University of Agriculture, Latvia (Jelgava), JTI-Swedish Institute for Agricultural and Environmental Engineering, Sweden (Uppsala), County Administrative Board of Östergötland, Sweden (Linköping), City of Loviisa, Finland (Loviisa), Nylands Svenska Lantbrukssällskap, Finland (Helsinki), Jelgava Local Municipality, Latvia (Jelgava)

Associated Partners Vreta Kluster, Sweden (Vreta Kloster)

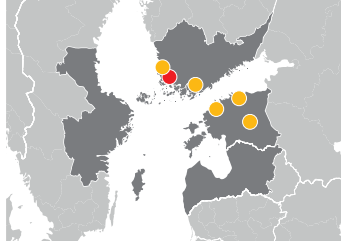
SustainBaltic

ICZM Plans for Sustaining Coastal and Marine Human-ecological Networks in the Baltic Region

The aim of the project to ensure that sea-land interfaces are preserved and further developed. This is done by defining the most crucial planning criteria for the Integrated coastal zone Management (ICZM) plans.

This aims is achieved by Integrating extensive multidisciplinary human-ecological data on the whole project area into GIS analyses, Selecting four case study areas from Estonia and Finland, and by making four digital ICZM plans for the case areas. The plans are first tested with the current regional land use of the project area and thereafter assessed by using both e-platforms and arranging working group sessions of stakeholders and end users directed by the project members. As final results of the project, the updated completed ICZM plans are to be downloaded from the websites of the SustainBaltic organisations.

The improved management of coastal and maritime areas by ICZM planning supports open communication with a participatory evaluation between different stakeholders, such as end users of planning organisations, nature and environmental management sectors, primary industries, as well other business industries and general public. This leads towards more integrated planning and to the enhancement of sustainability in the use of natural and human resources in the Central Baltic region.



Specific Objective 2.2. Sustainably planned and managed marine and coastal areas

Subprogramme Southern Finland - Estonia

Call Call 2 Regular projects

Duration 9/2016 - 2/2019

Total Project Budget (€) 1 306 732

ERDF 1 022 548

Project WWW www.utu.fi/en/sites/SustainBaltic/Pages/home.aspx

Lead Partner University of Turku, Finland (Turku)

LP Contact www.utu.fi

Project Partners Estonian University of Life Sciences, Estonia (Tartu), Finnish Environment Institute, Finland (Helsinki), Tallinn University, Estonia (Tallinn), The Regional Council of Satakunta, Finland (Pori), Lääne-Viru County Government, Estonia (Rakvere)



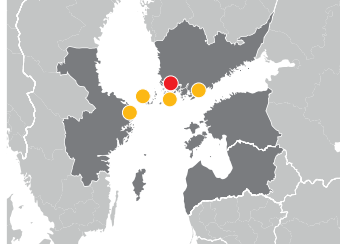
DefenceArch

Footprints of Defence in the Archipelago

The Archipelagos of Stockholm, Åland and Turku are well-known as natural tourist attractions. However, accessibility is still weak and the themes of cultural heritage, insular way of life and digital technology have not been highlighted enough, when planning experiences for visitors during pre-, on-site and post-visit phases. The project develops digital outputs for marketing and enrichment of visits, accessibility solutions, especially environmentally and culturally sustainable solutions, cross-border archipelago heritage tour suggestions, improved service chains and multidisciplinary development methods.

The overall objective is to develop existing, though almost untapped historical resources of the Gålö seal farm, the Bomarsund fortress, the southern cape of Örö and Korpoström into appealing and sustainable tourist destinations by increasing awareness and perceived value of these experiences.

In the end, the four pilot sites will form a themed tourism destination which will highlight the Baltic Sea defence history. Improved accessibility and experience value will increase the number of visits, the length of stay and tourism expenditure. This will revitalise business opportunities. Jointly developed solutions are also transferred to other insular destinations.



Specific Objective 2.1. Natural and cultural resources developed into sustainable tourist attractions

Subprogramme Archipelago and Islands

Call Call 2 Regular projects

Duration 9/2016 - 2/2019

Total Project Budget (€) 1 534 661

ERDF 1 150 996

Project WWW

visitdefencearch.turkuamk.fi

Lead Partner Turku University of Applied Sciences Ltd., Finland (Turku)

LP Contact www.tuas.fi

Project Partners Parks & Wildlife Finland, Finland (Vantaa), Visit Åland, Åland (Mariehamn), The Stockholm Archipelago Foundation, Sweden (Stockholm), The Åboland Archipelago Foundation, Finland (Korpoström)



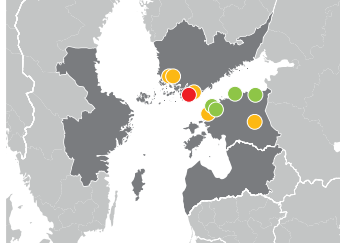
Plan4Blue

Maritime Spatial Planning for Sustainable Blue Economies

The Plan4Blue project promotes sustainable planning and management of marine and coastal areas of the Gulf of Finland and the Archipelago Sea by developing a Maritime Spatial Planning (MSP) capacity. This aim will be achieved by setting up a cross-border collaboration in the field for this area.

The project supports growth of the marine and maritime sectors in a way that emphasizes the need to find a balance between economic, social and environmental goals. Because many of the economic activities cross borders and have cross-border impacts, planning and management requires cross-border collaboration between stakeholders and authorities.

The project responds directly to the programme goals by developing capacity in cross-border MSP in order to ensure a sustainable use of common resources. The project facilitates the collaboration of stakeholders and authorities to find cross-border solutions for sustainable planning and management of marine and coastal areas. The project focuses on cross-border aspects, but addresses also national and county levels as appropriate. The result will help to improve management of Gulf of Finland and its coastal areas.



Specific Objective 2.2. Sustainably planned and managed marine and coastal areas

Subprogramme Southern Finland - Estonia

Call Call 2 Regular projects

Duration 10/2016 - 12/2019

Total Project Budget (€) 1 997 882

ERDF 1 563 522

Lead Partner Finnish Environment Institute, Finland (Helsinki)

LP Contact www.syke.fi/en-US

Project Partners University of Tartu, Estonia (Tartu), University of Turku, Finland (Turku), Uusimaa Regional Council, Finland (Helsinki), Regional Council of Southwest Finland, Finland (Turku), Baltic Environmental Forum Estonia, Estonia (Tallinn)

Associated Partners Estonian Ministry of Finance, Estonia (Tallinn), Harju County Government, Estonia (Tallinn), Ida-Viru County Government, Estonia (Jõhvi), Lääne-Viru County Government, Estonia (Rakvere)

St Olav WATERWAY

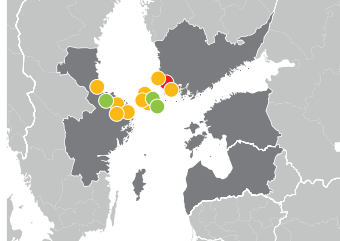
St Olav Waterway

St Olav Waterway

The aim of this project is to create a pilgrim route, “St Olav Waterway”, from Turku Finland to Åland Islands and Hudiksvall city in Sweden via the Archipelago. The route will be incorporated with other St Olav routes in Sweden and Norway. This itinerary is unique as it is the only pilgrim route that also include water pathways. The scope of the project is to increase the attractiveness of the region, especially off-season. Because the popularity of other parts of this route in Norway and Sweden is steadily increasing, it is expected that new services, jobs and an earning capacity for local entrepreneurs will increase as well.

To support the concept of sustainable tourism, paper brochure and signs/posters will be replaced by Digital solutions as often as possible. Discussions about applying for inclusion into the network “European Cultural Route of St Olavs Ways” have already started.

Because at the same time other organisations are implementing projects to recreate the St Olav Way from Turku to the east it seems possible that within some years the “Route of Saint Olav Ways” will be expanded. Hopefully one day there will be a St Olav route all the way from Novgorod to Nidaros and Trondheim as there was 1000 years ago.



Nina Söderlund

Specific Objective 2.1. Natural and cultural resources developed into sustainable tourist attractions

Subprogramme Archipelago and Islands

Call Call 2 Regular projects

Duration 9/2016 - 11/2019

Total Project Budget (€) 1 522 133

ERDF 1 141 600

Project WWW www.st-olav.com/

Lead Partner Åbo Akademi University, Finland (Turku)

LP Contact www.abo.fi

Project Partners City of Pargas, Finland (Pargas), Novia University of Applied Sciences, Finland (Turku), The Association of St Francis on Kökar, Åland (Kökar), Time for pilgrimage in Sweden, Sweden (Forsa), Municipality of Söderhamn, Sweden (Söderhamn), The Municipality of Sottunga, Ålan (Sottunga), Municipality of Östhammar, Sweden (Östhammar)

Associated Partners The Archipelago cooperation of the Nordic Council of Ministers, Åland (Kumlinge), Municipality of Gävle, Sweden (Gävle), Municipality of Hudiksvall, Sweden (Hudiksvall), Parish of Jomala, Åland (Jomala)

BALTACAR

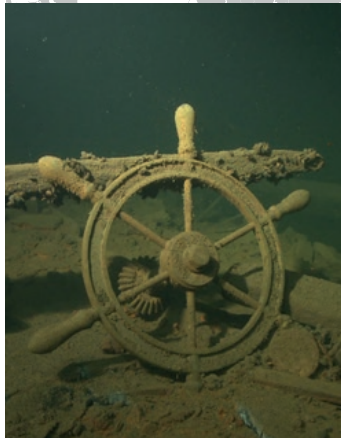
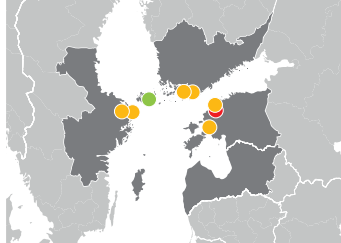
BALTACAR

Baltic History Beneath Surface: Underwater Heritage Trails In Situ and Online

The underwater landscape of the Baltic Sea is a unique ecological and cultural-historical environment resulting from the combination of a long seafaring history and good preservation conditions. The remains of shipwrecks in Estonian, Finnish and Swedish waters, many of them hundreds of years old, often sit upright with masts and rigging still intact. In this aspect, the Baltic Sea is a giant underwater museum waiting to be visited

The project “Baltic History Beneath Surface: Underwater Heritage Trails In Situ and Online” aims to demonstrate the huge tourism potential of the underwater cultural heritage of the Baltic Sea by developing easy and convenient ways for visiting our unique and well preserved underwater sites in situ.

The project will produce several new tourist attractions in the Baltic Sea that are supplied with buoys, underwater information boards and dive trails. With the creation of these tourist attractions we aim at enhancing the attractiveness of the Baltic Sea destinations and increase the number of visits to our region.



Specific Objective 2.1. Natural and cultural resources developed into sustainable tourist attractions

Subprogramme Archipelago and Islands

Call Call 2 Regular projects

Duration 1/2017 - 12/2019

Total Project Budget (€) 1 633 243

ERDF 1 294 568

Lead Partner Estonian National Heritage Board, Estonia (Tallinn)

LP Contact www.muinas.ee

Project Partners National Board of Antiquities, Finland (Helsinki), Swedish National Maritime Museums, Sweden (Stockholm), Adrianto Ltd, Estonia (Tallinn), Aalto Group Ltd, Finland (Helsinki), Haninge Municipality, Sweden (Haninge), NGO West-Estonia Tourism, Estonia (Lihula, Lääne maakond)

Associated Partners Government of the Åland Islands / Åland Board of Antiquities, Åland (Mariehamn)



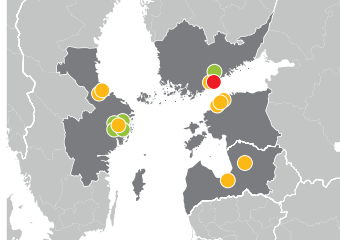
Augmented Urbans

Visionary, Participatory Planning and Integrated Management for Resilient Cities

Cities around the world have identified the need for better integrated participatory urban management to bridge their long-term visions and objectives into practical urban development actions. AU provides a cross-border collaboration platform to Central Baltic cities willing to address integrated urban planning challenges.

Augmented Urbans (AU) aims at strengthening the integration of three aspects of urban planning: timeframe, participation and technology. It improves stakeholder participation and links long-term visions with short-term actions to provide high level of expertise to Central Baltic cities. For this reason, new, augmented, virtual and mixed reality technologies (AR, VR & MR) are explored and utilised as tools to support urban planning processes in guiding discussions, and providing immersive scenarios.

A shared Matrix of indicators for urban resilience is co-developed and new technologies aid in creating a space for interaction between city officials and local actors. Local urban planning initiatives are run in each city with two iterations. These actions are supported by a multidisciplinary Advisory Board. The context, objectives and findings planned for each round are co-defined and shared during interregional Planners Forum events. Cities have an opportunity to adopt methods learned from their peers' planning and implementation experiences. In the framework of the project, five integrated urban management plans are developed to aid Central Baltic cities to become more resilient and sustainable. Gained insights are shared via existing networks.



Specific Objective 2.3. Better urban planning in the Central Baltic region
Subprogramme Central Baltic
Call Call 3 Regular projects

Duration 03/2018 - 02/2021
Total Project Budget (€) 2 029 723
ERDF 1 593 294

Lead Partner Metropolia University of Applied Sciences, Finland (Helsinki)
LP Contact www.metropolia.fi/en/

Project Partners Stockholm University, Sweden (Stockholm), University of Gävle, Sweden (Gävle), Municipality of Cesis, Latvia (Cēsis), The Gävle Homestead, Sweden (Gävle), Tallinn University, Estonia (Tallinn), City of Helsinki, Finland (Helsinki), Viimsi Municipality Government, Estonia (Viimsi), Riga Planning Region, Latvia (Riga), City of Tallinn, Estonia
Associated Partners City of Vantaa, Finland, City of Stockholm Real Estate Department, Sweden (Stockholm), KOD Architects, Sweden (Stockholm), The City Planning Administration, Sweden (Stockholm), The County Administrative Board of Stockholm, Sweden (Stockholm)



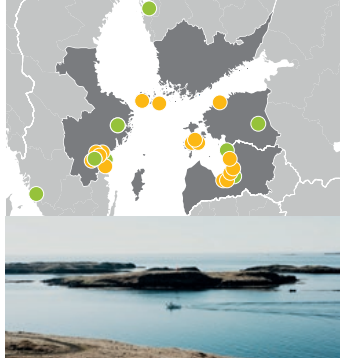
Coast4us

Marine and coastal areas, face similar environmental and spatial planning challenges in the Baltic Sea Region. The increasing demands of exploiting these areas are creating potential conflicts with other interest such as preservation of natural resources and ecosystem services. It is essential that different values and interests are recognized in the marine and coastal plans to reach long term sustainable development in the Baltic Sea Region.

The idea of this project is to develop a holistic and inclusive approach in to the planning process, through involving stakeholders of different interests and together create sustainable marine and coastal zone plans. New methods and strategies will be developed and evaluated to visualize different values and interests and to improve local participation in order to make them more efficient and sustainable.

The partners in this project have key roles in spatial planning and represent municipalities, regional and national authorities, universities, NGO's and private companies. The partners complement each other concerning spatial planning, which make the results and outcomes of the project reachable and viable. Coast4us will exchange experience and knowledge with current and earlier projects, and ensure that new tools and management strategies developed in this project are transferred to other areas in the Baltic Sea Region.

The main outputs from the project will be sustainable marine and coastal spatial plans for pilot areas in Åland, Latvia, Sweden and Estonia, and new tools and management strategies, guidelines and better cooperation between stakeholders regarding spatial planning. Important outputs are also innovative technical tools, such as GIS tools, web-based platforms, web and mobile applications, developed to support a transparent and inclusive planning process. In addition, these plans could lead to the creation of new jobs.



Specific Objective 2.2. Sustainably planned and managed marine and coastal areas

Subprogramme Central Baltic
Call Call 3 Regular projects

Duration 01/2018 - 12/2020

Total Project Budget (€) 3 084 924

ERDF 2 399 828

Lead Partner County Administrative Board of Östergötland

LP Contact

www.lansstyrelsen.se/Ostergotland

Project Partners All of Sweden shall live Östergötland (Ulrika), Coompanion Östergötland (Norrköping), Valdemarsviks municipality (Valdemarsvik), Municipality of Norrköping, Linköping university (Norrköping), Aspoja Fastigheter (Stockholm), The Government of Åland (Mariehamn), Kökar municipality (Kökar), The Ministry of Environmental Protection and Regional Development of the Republic of Latvia (Riga), Carnikava Municipality, Saulkrasti Municipality, Salacgriva Municipality, Riga Technical University (Riga), Tallinn University of Technology (Tallinn), Lääne-Saare municipality (Saare county), Pihlta municipality (Saare county), Põide Municipality (Saare county)

Associated Partners Swedish Agency for Marine and Water Management (Gothenburg), Region Östergötland (Linköping), County Administrative Board of Västerbotten (Umeå), County Administrative Board of Stockholm (Stockholm), Public and Private Partnership Association of "Sernikon" (Carnikava), Societty "Jürkante" (Ainaži), Centre for Economic Development, Transport and the Environment in South Ostrobothnia (Vasa), Estonian Ministry of Finance (Tallinn), Söderköping Municipality

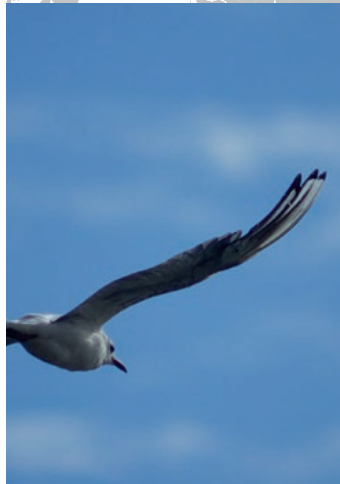
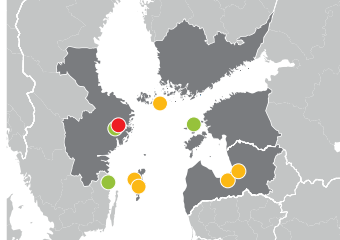
Baltic Wings

Baltic Wings - nature tourism for sustainable rural economic development

The Central Baltic region has great natural resources with – in the European context – relatively untouched wildlife areas but it is still rather unknown to nature tourists.

The project aims to increase visits to already known sites for birdwatching and other nature activities as well as to develop new sites in order to extend the now short tourism season. In order to achieve our common goals, co-operation across national borders with focus on developing high-standard attractions and services is needed. Facilities need to be upgraded and accessibility for all visitors, including those physically disadvantaged, must be improved. Birding infrastructure, such as birding platforms, trails, hides and nature information centres/info points suitable for national as well as international tourism is needed and will be built within the project. By working together, we can offer nature lovers from all over the world a wide variety of natural landscapes, biotopes and special and rare species. Joint migratory routes for birds connects the countries in the region and will be a special theme in the project. Together it is possible to make targeted international marketing activities. By involving local partners that can develop tourism services, new job opportunities in rural areas will be created. Local guides are important for the fulfilment of the project aims. Guide education is an important part of the project.

The connection between small-scale farming and high nature values such as rich biodiversity and beautiful open landscapes will be emphasised to create awareness of the value of nature protection. The development of first class wildlife and bird sites will also be beneficial to the local public with free access to installations. This will also be of great educational value to schools for nature studies.



Specific Objective 2.1. Natural and cultural resources developed into sustainable tourist attractions
Subprogramme Central Baltic
Call Call 3 Regular projects

Duration 01/2018 - 12/2020
Total Project Budget (€) 1 438 273
ERDF 1 100 271

Lead Partner Stockholm Bird Association, Sweden (Stockholm)
LP Contact www.stof.nu

Project Partners Närsholmen Society, Sweden (Stånga), Kökar Municipality, Finland (Kökar), Regional authority of Gotland, Sweden (Visby), Nature Tours, Latvia (Riga), Nature Conservation Agency, Latvia (Sigulda), The Swedish Ecotourism Society, Sweden (Västervik),
Associated Partners Moonsund Eco Ltd, Estonia (Kärdla, Hiiumaa county), The Archipelago Foundation, Sweden (Stockholm)

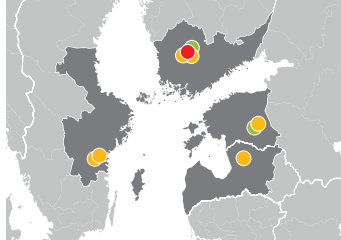
Lakesperience

Explore the Nordic-Baltic lakes

Lakes are an important part of culture in Finland, Sweden, Estonia and Latvia. They have a significant recreational value and potentiality as tourist attractions. The joint challenge is how to harness the business and touristic potential of Central Baltic lakes and their surroundings to sustainably make them easier to reach by local and foreign tourists.

The Lakesperience project aims to connect the Central Baltic lakes as a joint tourist attraction through developing tempting lake-service packages for all seasons of the year, joint map service and an awarding system for tourists visiting several lakes, organising lake festivals, developing joint marketing materials and above all a Nordic-Baltic lake brand “Lakesperience”.

The project will increase the attractiveness and visibility of Finnish, Swedish, Estonian and Latvian lakes and their environments as sustainable natural heritage tourist attractions and products. The partners will develop service packages and their marketing through organising local and joint workshops for lake tourism service companies and sharing experiences and challenges in each location. The project connects lakes Pyhäjärvi and Näsijärvi in Tampere Finland, lakes Åsunden, Järnlunden and Stora Rängen in south of Linköping, Sweden, lake Peipsi in Tartu, Estonia and lake Burtnieku in Latvia as a joint tourist attraction. The project will involve and enhance business and marketing cooperation between at least 20 Finnish, 20 Swedish, 15 Estonian and 15 Latvian companies that provide services for lake tourists. As a result the number of lake tourists will increase by 5000 altogether in the involved locations during the project.



Specific Objective 2.1. Natural and cultural resources developed into sustainable tourist attractions

Subprogramme Central Baltic

Call Call 3 Regular projects

Duration 01/2018 - 12/2020

Total Project Budget (€) 1 212 881

ERDF 933 184

Lead Partner The Baltic Institute of Finland (Tampere)

LP Contact www.baltic.org/

Project Partners Visit Tampere Ltd., Finland (Tampere), Ecofellows Ltd., Finland (Tampere), Peipsi Centre for Transboundary Cooperation, Estonia (Tartu), Region Östergötland, Sweden (Norrköping), County Administrative Board of Östergötland, Sweden (Linköping), Burtnieku County municipality, Latvia (Valmiera parish)
Associated Partners Tampere Region Economic Development Agency Tredea, Finland (Tampere), Peipsimaa Tourism, Estonia (Tartu)



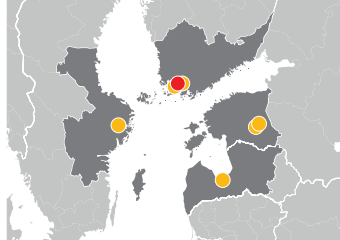
HEAT

Participatory urban planning for healthier urban communities

The HEAT project, realized by partners from Estonia, Finland, Latvia and Sweden addresses the problem of fragmented urban planning and cycling infrastructure. The main reasons are limited participation of citizens and other sectors in the planning processes. Moreover, the initiatives that aim at promoting biking in cities are often fragmented, full of gaps - thus, with low impact. The problem is relevant because of not only environmental concerns but also of health and social issues. Current consulting practices fail to involve city inhabitants and other sectors in the urban planning process to express their needs. People are experts in their city and their view can considerably enrich urban plans. Well-designed urban environments have the potential to enrich health, social and educational functions of a city.

To improve urban planning practices in CB region, the HEAT project proposes to bring city inhabitants and regional and municipal officials at the centre of urban planning by developing new and effective ways of consulting them. People will take part in interactive workshops and campaigns where they will be able to create their vision of biking infrastructure. At the same time, an economic analysis of savings to the health sector through increased biking will provide an argument for future investments. Stakeholders from both the local and regional level will be actively involved in these processes.

The overall objective of the project is to contribute to the planning of healthier, more active and inclusive urban areas in the CB region, in which biking is a safe, popular and acceptable mode of transport. To make this happen, Participatory Concepts for development of biking infrastructure in pilot cities and region of Southwest Finland will be developed and pilot actions will be conducted. Thanks to cross-border cooperation, partners will learn from each other, share experiences and support each other with their specific expertise. Project results will be widely distributed in CB region and beyond.



Specific Objective 2.3. Better urban planning in the Central Baltic region
Subprogramme Central Baltic
Call Call 3 Regular projects

Duration 04/2018 - 03/2021
Total Project Budget (€) 823 803
ERDF 646 644

Lead Partner Baltic Region Healthy Cities Association, Finland (Turku)
LP Contact www.marebalticum.org

Project Partners Council of Southwest Finland - Service Centre for Sustainable Development and Energy of Southwest Finland (VALONIA), Finland (Turku), Turku University of Applied Sciences, Finland (Turku), Jurmala City Council, Latvia (Jurmala), Institute of Baltic Studies, Estonia (Tartu), Tartu City, Swedish Cycling Advocacy Organization, Sweden (Stockholm)

SEABASED

Seabased Measures in Baltic Sea Nutrient Management

Although nutrient load from land-based sources to the sea has been reduced significantly over the years, good ecological status has not been reached partly due to the large amount of internal loading from the bottom sediments. Moreover, fulfilling the nutrient reductions agreed in the HELCOM BSAP seems challenging for many countries such as Sweden and Finland. Therefore, both Finnish and Swedish governments have decided to include seabased measures in their Baltic Sea protection policy (MSFD and governmental programs). As local authorities are currently also lacking effective means to improve water quality in coastal and semi-enclosed sea areas where the traditional land-based measures are not sufficient, there is a growing demand for applying seabased measures. Scientists have proposed various seabased measures for the Baltic Sea. However, comprehensive information with regards impacts, costs, risks, applicability and financing of the different measures is currently lacking.

The project aims at reducing nutrients from the Baltic Sea and at improving water quality, especially in coastal areas, by piloting and developing seabased activities. As an added benefit, some of these measures enable nutrient recycling and circular economy.

The project will pilot several promising measures, such as 1) recycling nutrients from bottom sediments or nutrient-rich bottom waters for further use on land, 2) recycling nutrients on land in the form of fish such as stickleback, 3) applying various nutrient binding materials to sediments. Moreover, the project aims at facilitating an open, multi-disciplinary and cross-sector dialogue on benefits and risks of seabased measures and their applicability in Baltic Sea context.

As a result, the project will develop the concept of Marine Habitat Bank for local water quality improvement and ecosystem restoration measures; and Practical Guidelines on Seabased measures in the Baltic Sea.



Specific Objective 2.4. Reduced nutrients, hazardous substances and toxins inflow into the Baltic Sea
Subprogramme Central Baltic
Call Call 3 Regular projects

Duration 03/2018 - 02/2021
Total Project Budget (€) 2 841 612
ERDF 2 131 209

Lead Partner John Nurminen
Foundation, Finland (Helsinki)
LP Contact
www.johnnurmisenraatio.fi

Project Partners The Centre for Economic Development, Transport and the Environment for Southwest Finland, Finland (Turku), The Åland fish farmers' association, Finland (Mariehamn), The Government of Åland, Finland (Mariehamn), Baltic Works Commission, Sweden (Stockholm), Stockholm University, Sweden (Stockholm), The County Administrative Board of Östergötland, Sweden (Linköping)
Associated Partners The Åland's fishermen's Association, Finland (Mariehamn), Local Leader Project in Åland, Finland (Mariehamn), The Administrative County of Stockholm Environmental Department, Sweden (Stockholm), Tallinn University of Technology, Estonia (Tallinn), Water and Environment Research Group, Estonia (Tallinn)



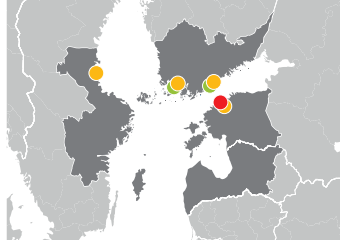
HEAWATER

Achieving healthier water quality in urban small rivers of the Baltic Sea catchment by restoration of water bodies and preventing of nutrients and hazardous substances inflow from watersheds.

Local authorities located on the Baltic Sea coastal areas face the same challenges regarding small urban water bodies and their watersheds. These watersheds are the source of nutrients, hazardous substances, toxins and micro-litter. All municipalities involved in the project need to reduce nutrient loading in small urban water bodies in order to minimize the negative impacts nutrients have on the Baltic Sea and on the surrounding urban ecosystems. Yet, they do not have the resources to identify and test the most effective solutions for all environmental problems.

The objective of HEAWATER is to verify and test the most effective technological solutions that may help to reduce pollution loads from/to small urban rivers in Tallinn (EE), Turku (FI) and Söderhamn (SE). The project will identify the best solutions for each challenge, and through cross-border cooperation, it will enable decision-makers to implement them. Implemented solutions will also help to raise local population awareness about the impact of human activities.

Implemented methods will help to restore water quality (WQ) and biota of the rivers, reduce pollution from at least 2-3 sources per partner municipality by ca. 10%. The benefits of restoration will be underlined by costs-benefit analyses. The result is the improved ecology and WQ in urban streams. The project results will be combined into a decision support tool (DST) meant for decision makers in coastal BSR municipalities. New watersheds-based solutions implemented in HEAWATER can be applicable in other regions of the BS and will be promoted through different networks and other projects. HEAWATER will support the achievement of the goals set by HELCOM BSAP.



Specific Objective 2.4. Reduced nutrients, hazardous substances and toxins inflow into the Baltic Sea
Subprogramme Central Baltic
Call Call 3 Regular projects

Duration 03/2018 - 02/2021
Total Project Budget (€) 1 898 348
ERDF 1 488 788

Lead Partner Tallinn City
Government, Estonia
LP Contact www.tallinn.ee

Project Partners Turku University of Applied Sciences, Finland (Turku), Tallinn University of Technology, Estonia (Tallinn), The Municipality Söderhamn, Sweden (Söderhamn), Finnish Environment Institute, Finland (Helsinki)

Associated Partners City of Turku, Finland, John Nurminen Foundation, Finland (Helsinki)

Priority 3
Well-connected region



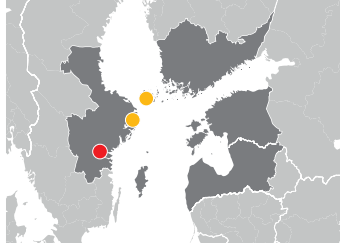
ADAPT

Assuring Depth of fairways for Archipelago Public Transportation

The project ADAPT addresses a cross-border challenge connected to attaining the joint and efficient public transportation system in the archipelagos. The project aims at developing safe, time-saving and fuel-efficient routes for the transportation of passengers and goods in the Åland and Stockholm archipelagos.

In practice the project improves maritime transport system as part of the intermodal system for public transportation along with reducing its environmental impacts and enabling safe and state of the art navigation. To reduce CO2 emissions the project aims to develop more fuel efficient routes. The main beneficiaries are passengers using public transport in the archipelago as well as communities and businesses on the islands depending on tourism and public transportation.

As a result of the project the overall travel times for passengers using public transportation in the Stockholm and Åland archipelagos is reduced by more than 10%. A number of traffic routes are adjusted, while others are under consideration for future adjustments. New tools and methods are in place for optimising vessel use and operation in case of shallow and narrow waters or severe weather conditions. The changes result in improved flows of people and goods.



Specific Objective 3.1. Improved transport flows of people and goods
Subprogramme Archipelago and Islands

Call Call 1 Regular projects

Duration 3/2016 - 8/2019

Total Project Budget (€) 2 181 433

ERDF (€) 1 636 075

Lead Partner Swedish Maritime Administration, Sweden (Norrköping)

LP Contact www.sjofartsverket.se

Project Partners Stockholm County Council, Sweden (Stockholm), The Government of Åland, Finland (Mariehamn)



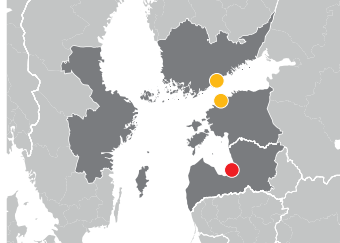
SMART E67

Advanced traffic management on E67 transport corridor

The project SMART E67 aims at increasing efficiency and safety of passenger and cargo mobility in the Central Baltic region by introducing Intelligent Transport Systems (ITS) on a key transport corridor in Estonia and Latvia. In both countries among other routes, the E67 transport corridor has the highest annual average daily traffic rates. While basic road infrastructure has been modernized on E67 transport corridor in Latvia and Estonia, traffic information and management systems need improvements to ensure efficient, environment friendly, safe passenger and cargo transport.

In practice the project introduces the ITS elements via pilot investments by developing adaptive traffic management-roadside variable message signs, modernized traffic lights, road weather information systems and other equipment providing to traffic participants timely, efficient and accurate traffic information. The project is implemented in cooperation with the Latvian State Roads and Estonian Road Administration.

The project results in adding information, management and communication technology to E67 transport corridor covering 202 km in Latvia and 192 km in Estonia. E67 road is more efficient which decreases travel time of passengers and cargos. Traffic information about road conditions, road works, congestions, and accidents contribute to the achievement of traffic efficiency whereas roadside telematics reduce traffic accidents. All in all, project E67 results contribute to the achievement of traffic efficiency, safety and reduction of CO2 emissions.



Specific Objective 3.1. Improved transport flows of people and goods
Subprogramme Central Baltic
Call Call 1 Regular projects

Duration 9/2015 - 8/2018
Total Project Budget (€) 2 458 999
ERDF (€) 2 090 149

Lead Partner State Joint Stock Company "Latvian State Roads", Latvia (Riga)

LP Contact lvceli.lv

Project Partners Estonian Road Administration, Estonia (Tallinn)
Associated Partners Finnish Transport Agency, Finland (Helsinki)



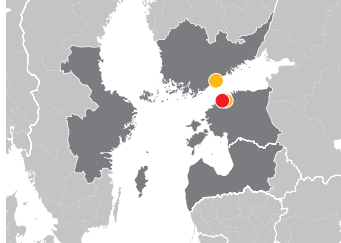
MobiCarnet

MobiCarnet: integrated system for automated and paperless management of transit documents and for tracking movement of goods in real-time

The project MobiCarnet aims at improving the transport flows of goods and reducing the time-consumption of the movement of goods cross-border. The idea is to create an integrated system for automated and paperless management of transit documents and for tracking movement of goods in real-time. Currently, there is no united and integrated system for managing transport-related information and documentation across borders electronically. Creating such a system would make the transportation of goods less time consuming and more effective.

In practice, the MobiCarnet system will contribute to harmonized transport procedures by enabling real-time overview of trucks and the movement of goods for all authorised organisations involved and by preventing duplication and double checking of data. The MobiCarnet system will be, at first, implemented within in three transport corridors between Estonia and Finland. After the project, both partners will be responsible for developing the system further according to the needs and possible changes in the regulations of their respective country.

As the result of the project, the transport flow of goods will be improved. According to the current estimates, the time needed for the movement of goods in the three strategic transport corridors (Ikla-Kotka, Ikla-Kemi and Luhamaa-Turku) will be reduced by more than 13 %. The project is implemented in close partnership between the lead partner, the Association of Estonian International Road Carriers, and partner SKAL Kustannus Oy, who is responsible for developing two applications (management of ADR transports and CO2 calculator) to the MobiCarnet solution family. All in all, the project targets to improve the transport corridors within the Central Baltic region.



Specific Objective 3.1. Improved transport flows of people and goods
Subprogramme Southern Finland - Estonia
Call Call 1 Regular projects

Duration 9/2015 - 8/2017
Total Project Budget (€) 2 000 000
ERDF (€) 1 650 000

Lead Partner Association of Estonian International Road Carriers, Estonia (Tallinn)
LP Contact www.eraa.ee

Project Partners SKAL Kustannus Oy, Finland (Helsinki)
Associated Partners Estonian Tax and Customs Board, Estonia (Tallinn)

30MILES

Small port every 30 miles apart - Development of services for lively water tourism in the Eastern Gulf of Finland

The project 30MILES aims at improving the overall service level and safety in small ports and waterfront. The problem is that there is no network of small ports with a good service level and enough piers for leisure boaters to visit. As better small ports increase the attractiveness of the region the project idea is to organise small ports into a cooperating network in the distance of every 30 miles.

In practice the project establishes a ring of ports around the Eastern Gulf of Finland to focus on joint development of sustainable port services and marketing activities. Joint efforts are made to improve the services offered in small ports and help them receive better visibility from the potential visitors. Effective marketing is implemented to inform the visitors and to create sustainability for the local businesses.

As a result of the project service level increases in 12 small ports in the Eastern Gulf of Finland. The new ring of ports create an attractive entity which is in the interest of boaters. The information about the services of the ports and accessibility is clearly presented. The improvements attract new businesses and investors, which in turn attract more visitors to the area.



Specific Objective 3.2. Improved services of existing small ports to improve local and regional mobility and contribute to tourism development

Subprogramme Southern Finland - Estonia

Call Call 1 Regular projects

Duration 9/2015 - 8/2018

Total Project Budget (€) 3 301 746

ERDF (€) 2 601 314

Lead Partner Kotka Maritime Research Association (Kotka)

LP Contact www.merikotka.fi

Project Partners Kymenlaakso University of Applied Sciences, Finland (Kotka), University of Helsinki, Finland (Helsinki), Cursor Ltd, Finland (Kotka), Posintra Ltd, Finland (Porvoo), Ida-Viru Enterprise Centre, Estonia (Jõhvi), Non profit organisation of Eisma Harbor, Estonia (Vihula county), Viimsi Municipality, Estonia (Viimsi), Estonian Maritime Museum, Estonia (Tallinn), Narva City, Estonia (Narva), Narva-Jõesuu Municipality, Estonia (Narva-Jõesuu)

Associated Partners Lääne-Viru County Government (LVGOV), Estonia (Rakvere), Finnish Sailing and Boating Federation (FSBF), Finland (Espoo)



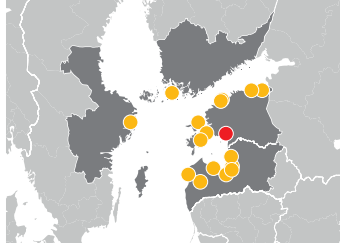
SmartPorts

Modern and attractive small ports network through cross-border interactive information system, joint marketing and improved port services

The project SmartPort aims at improving and integrating network of small ports via modern information and communication technology. The project increases the service quality of small ports in the Central Baltic region and helps to create better awareness about marina network to double the number of visitors by the sea.

In practice the project implements systems that facilitate cross border information exchange, as well as creates new port services by investing into modern marina technology.

As a result of the project a cross-border interactive information system for small harbours is jointly developed and piloted. More precisely, the level of services is improved in 25 marinas in four countries. The number of foreign visitors by the sea is increased and doubled by 2020. The visitors are also expected to stay longer in the improved ports. Notable parts of the result are the improved safe navigation and docking services in the small ports as well as improved environmental protection and pollution prevention services.



Specific Objective 3.2. Improved services of existing small ports to improve local and regional mobility and contribute to tourism development

Subprogramme Central Baltic
Call Call 1 Regular projects

Duration 6/2015 - 6/2017
Total Project Budget (€) 1 455 658
ERDF (€) 1 225 260

Lead Partner Estonian Small Harbour Development Center, Estonia (Pärnu)

LP Contact www.evak.ee

Project Partners Kurzeme Planning Region, Latvia (Saldus), Riga Planning Region, Latvia (Riga), Jurmala port authority, Latvia (Jurmala), Mersrags Port Authority, Latvia (Mērsrags), Skulte port authority, Latvia (Zvejniekiems, Saulkrastu novs), Salacgriva Port Authority, Latvia (Salacgriva), Pavilosta Port, Latvia (Pavilosta), Hiiu County (Port of Kärkla), Estonia (Hiiumaa), Sottunga municipality, Finland (Sottunga), Archipelago Foundation in Stockholm County, Sweden (Stockholm), Kalev Yacht Club, Estonia (Tallinn), Liimjala Port Development (Port of Purtse), Estonia (Lüganuse county), Lõunaranna Investeeringud Ltd, Estonia (Tallinn), Kõiguste Marina MTÜ, Estonia (Laimjala vald)

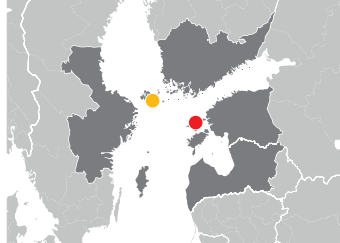
MASAPO

Development of Maritime Safety in the Small Ports in the Baltic Sea Region

The project MASAPO aims at developing maritime safety in small ports in the Baltic Sea Region. The project tackles the lack of information about small ports and safety services in Estonia and Åland. The project develops cooperation between small ports in Estonia and Åland islands to provide better information about the ports and their safety services. The project involves pilot voluntary maritime rescue organisations to use their international experience in developing and implementing higher safety standards in the ports for tourists and local habitants.

In practice the project jointly surveys and maps the current safety situation in the participating small ports and makes development plans for the needed investments. The project does research and trains volunteers and local service providers in the pilot ports to have the necessary skills for preventive activities and for participation in rescue operations.

As a result of the project the pilot small ports in Estonian and Åland islands have tight cooperation with four local voluntary maritime rescue organisations like members of Estonian Voluntary Maritime Rescue Organisation and stations of Åland island Lifeboat Society. Partners have jointly designed a basic safety quality sign and the safety services have been improved. Through these improvements the number of visitors on the islands is expected to increase as higher safety standards improve reliability and attract more visitors to the region.



Specific Objective 3.2. Improved services of existing small ports to improve local and regional mobility and contribute to tourism development

Subprogramme Archipelago and Islands

Call Call 1 Regular projects

Duration 10/2015 - 3/2018

Total Project Budget (€) 1 178 136

ERDF (€) 953 597

Project WWW www.masapo.ax

Lead Partner Hiiu Municipality, Estonia (Kärdla)

Project Partners Åland island Lifeboat Society, Finland (Mariehamn)

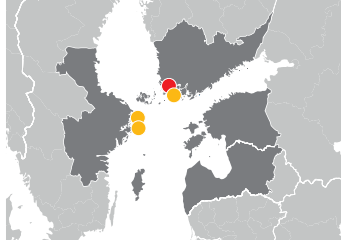
FamilyPorts

Green and Family-friendly Archipelago Ports

The project will make a joint architectural vision for small ports in Nagu, Dalsbruk, Lickershamn and Ronehamn, to address the need for high-quality, green, functional and accessible services. By making a joint plan and joint investments, the same high quality level of construction in participating ports can be guaranteed. The joint vision will be used by the individual ports in order to make the investments executable on the local level. The ports will invest into improved service buildings that are green, family-friendly and accessible to all visitors.

Joint marketing will inspire visitors to travel between regions and will show them that it is possible to get high quality services in several small ports in the archipelago, even off-season. The small ports will develop a network between each other that will be used for further joint development and marketing, and the ports will set a standard for other popular small ports to strive for.

The project can be a model for how other small Baltic Sea Region ports can upgrade their infrastructure and use joint marketing in the future.



Specific Objective 3.2. Improved services of existing small ports to improve local and regional mobility and contribute to tourism development

Subprogramme Archipelago and Islands

Call Call 2 Regular projects

Duration 7/2016 - 3/2019

Total Project Budget (€) 1 045 633

ERDF 784 224

Project WWW www.facebook.com/balticfamilyports/

Lead Partner City of Pargas, Finland (Pargas)

LP Contact www.pargas.fi

Project Partners Municipality of Kimitoön, Finland (Kimito), Region Gotland, Sweden (Visby), Lickershamns Fishermen's Association, Sweden (Visby)

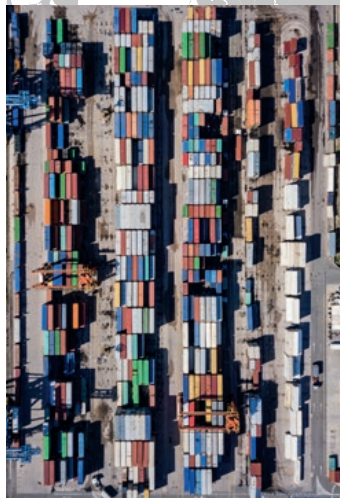
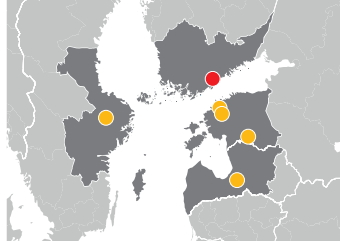
SmartLog

Smart Logistics and Freight Villages Initiative

The management of manufacturing, supply chain, logistics, and transportation industries are facing a substantial change, as new technologies are constantly developed. The change will affect how logistics providers of all sizes operate. Transportation cost and delivery time are critical aspects for most manufacturers as well as using technology to make transportation more efficient to help reduce overall costs and delivery time. Hence it is crucial for transportation management services, warehouse management systems, and other aspects of logistics to take Internet of Things (IoT) systems on board.

The project develops and tests IoT-solution within the logistics sector and logistic companies across the two corridors; ScanMed and North Sea-Baltic. The new solution will optimise all aspects of their integrated services (transportation, warehousing, cross-docking, inventory management, packaging, and freight forwarding) by creating a blockchain ledger for sharing the cargo transport status and location information across the transport corridors and giving companies access to vast amounts of anonymized data outside an organization.

This results on decreased operational costs of the companies as well as reduced time of delivery of goods.



Specific Objective 3.1. Improved transport flows of people and goods
Subprogramme Central Baltic
Call Call 2 Regular projects

Duration 9/2016 - 8/2019
Total Project Budget (€) 2 191 918
ERDF 1 707 377

Lead Partner Kouvola Innovation, Finland (Kouvola)
LP Contact www.kinno.fi

Project Partners Region Örebro county, Sweden (Örebro), Transport and Telecommunication Institute, Latvia (Riga), Valga County Development Agency, Estonia (Valga), Sensei LCC, Estonia (Saue), Tallinn University of Technology, Department of Mechanical and Industrial Engineering, Estonia (Tallinn)



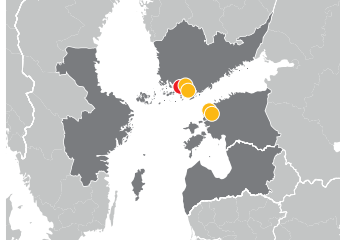
FinEst Link

Finnish Estonian Transport Link

The FinEst Link project focuses on the vastly growing transport connection between Finland - Estonia and Helsinki – Tallinn, which forms a unique cross-border case of twin cities in the EU. As part of the twin city concept a fixed link – a railway tunnel that would reduce the travel time to only 30 minutes – has been an ambitious vision in the two countries since 20 years.

The FinEst Link project takes a systematic fact-finding approach to the vision of a Helsinki-Tallinn fixed link and carries out a feasibility study that consists of the economic and technical analysis and benchmarking to other important fixed link projects in the EU. The project has an open information dissemination policy and all results during the project's lifecycle are distributed widely to stakeholders and actively discussed in various stakeholder events. As part of the discussion of the technical feasibility of the fixed link, the project invites developers of new technologies to present their solutions and economic standpoints of a fixed link. As a final result the project will make a recommendation of the possible continuation of the vision of a tunnel towards an infrastructure planning project.

The FinEst Link project builds on several earlier studies made in the Helsinki-Tallinn context, for instance HT-Transplan, as well as the pre-feasibility study of the fixed link, TalsinkiFIX.



Specific Objective 3.1. Improved transport flows of people and goods

Subprogramme Southern Finland - Estonia

Call Call 2 Regular projects

Duration 8/2016 - 7/2018

Total Project Budget (€) 1 298 383

ERDF 1 027 537

Lead Partner Helsinki-Uusimaa Regional Council, Finland (Helsinki)

LP Contact www.uudenmaanliitto.fi

Project Partners City of Helsinki, Finland (Helsinki), Tallinn Transport Department, Estonia (Tallinn), Harju County Government, Estonia (Tallinn), Finnish Transport Agency, Finland (Helsinki), Estonian Ministry of Economic Affairs and Communications, Estonia (Tallinn)

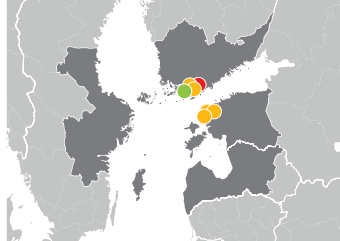
FinEstSmartMobility

Improving West Harbour - Old City Harbour mobility flows with smart solutions

Mobility is growing in Europe. The ferry connection between Helsinki West Harbor and Tallinn Old City Harbor is one of the busiest in the world with over 8 million annual passengers. The North Sea - Baltic TEN T Core corridor meets Scandinavian-Mediterranean TEN T core corridor at Helsinki, thus being a key node in the transport networks for northern Europe. Already the current traffic creates substantial congestion, noise and other negative externalities at both ports and in both cities. Until now, neither common mobility planning nor cross-border Intelligent Transport Systems (ITS) solutions have been implemented.

Lack of ITS solutions has been described as one of the main missing links in the North Sea Baltic corridor. A cross-border approach is needed to ensure an end-to-end user-centric experience of the mobility as well as better mobility planning. Both ports need equivalent tools for users, ferry operators, urban planners, and data management.

The project aims to pilot smart solutions that reduce travel time, amount of vehicles in port area and thus also congestion. The project contributes to these targets also indirectly: by contributing to open data and open source enablers for further innovations, and by sustainable mobility planning (SUMP) that further enables and drives towards travel time reduction. Moreover the project establishes market references for smart port solution providers.



Specific Objective 3.1. Improved transport flows of people and goods
Subprogramme Central Baltic
Call Call 2 Regular projects

Duration 9/2016 - 8/2019
Total Project Budget (€) 1 822 649
ERDF 1 443 839

Lead Partner City of Helsinki
LP Contact www.hel.fi

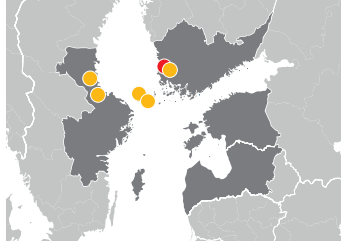
Project Partners City of Tallinn, Estonia (Tallinn), Estonian Road Administration, Estonia (Tallinn), ICT Demo Center, Estonia (Tallinn), Forum Virium Helsinki Ltd, Finland (Helsinki), City of Vantaa, Finland (Vantaa)

Associated Partners Helsinki Region Transport Authority, Finland (Helsinki)

PortMate

Safely connected and sustainable small ports in Central Baltic region

Currently common challenges for small ports especially in archipelago and islands are 1) limitations in safe access arrival, stay and departure the port due to less experienced seafarers as well as nature factors such as shallow and rocky routes, 2) lack of sustainable resource efficient services in ports, and 3) insufficient marketing activities separately in each port. In our project, these challenges are solved by mating the pilot small ports with the sailing triangle from Rauma, FI through Sottunga and Kökar, ÅX to Gävle-Söderhamn region, SE. Rauma and Gävle are also official sister cities. These areas have huge potential for visitors to the area both by the nature values and urban services. However, these small ports need practical co-operative actions to improve local and regional mobility and contribute to tourism development. Our pilot small ports are owned and operated by the cities or private company in Rauma, FI, Sottunga and Kökar (ÅX) and Gävle and Söderhamn (SE). The practical activities in pilot small ports are 1) formation of interactive step-by-step guidance by using ICT solutions, compatible with those existing used by the operators, for seafarers on safe arrival, stay and departure to/from the ports, 2) investments to sustainable and resource efficient infrastructure on land (e.g. solar energy, water, sanitation and WIFI availability), 3) mating the small port operators with each other and with seafarers (local people and visitors) in the small ports to meet the needs for services and their availability as well as co-operation activities i.e. marketing. The PortMate will enhance safe access, suitable “green services” and joint marketing in small ports. The best practices on share of pilot small ports with good services will be expanded to other Central Baltic areas by an open access web-based ICT solution as well as in face-to-face events. The result will be 19 Central Baltic small ports with improved services.



Specific Objective 3.2. Improved services of existing small ports to improve local and regional mobility and contribute to tourism development

Subprogramme Archipelago and Islands

Call Call 2 Regular projects

Duration 11/2016 - 12/2019

Total Project Budget (€) 2 727 225

ERDF 2 045 419

Project WWW www.facebook.com/CBPortMate

Lead Partner Satakunta University of Applied Sciences, Finland (Pori)

LP Contact www.samk.fi

Project Partners City of Rauma, Finland (Rauma), City of Gävle, Sweden (Gävle), Municipality of Söderhamn, Sweden (Söderhamn), Municipality of Sottunga, Åland (Sottunga), Kökar Havspaviljong Ab, Åland (Kökar)

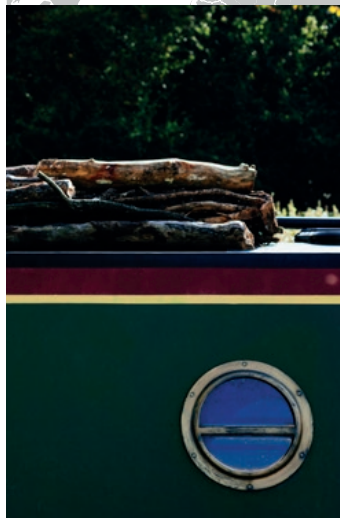
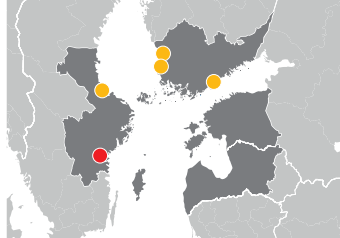
EfficientFlow

Efficient flow of goods and passengers between Finland and Sweden

The Baltic Sea Region is in need of efficient transportation solutions. In order to optimize the flow of goods in the transport corridor between Finland and Sweden by sea, road and rail there is a need to improve the quality of maritime transportation between Finland and Sweden. The possibilities for just-in-time arrivals and departures, especially in the maritime part of the corridor, should be improved.

The EfficientFlow project is a joint Swedish - Finnish initiative that contributes at the development of two transport corridors in the Central Baltic area e.g. the corridor to and between the ports of Gävle and Rauma and the ScanMed corridor between Stockholm and Turku. The project will make the transport flow in the corridors more efficient by improved processes and new digital solutions. The project will deliver improved processes, business models and ICT tools for enhanced information exchanges between port actors, between ports, between port and hinterland operators and between ports and ships.

The results of the project will be carefully analysed and evaluated, widely disseminated and can serve as best practices for other corridors and ports in the Central Baltic area and beyond. Improving the information exchange between the two corridor actors will contribute to higher efficiency and timesaving in both corridors. This will result in reduced transport time, higher transport predictability, improved sustainability and better transport quality. The project is expected to produce a 7% time saving.



Specific Objective 3.1. Improved transport flows of people and goods
Subprogramme Central Baltic
Call Call 3 Regular projects

Duration 03/2018 - 02/2021
Total Project Budget (€) 4 572 901
ERDF 3 429 676

Lead Partner Swedish Maritime Administration, Sweden (Norrköping)
LP Contact www.sjofartsverket.se

Project Partners Satakunta University of Applied Sciences, Finland (Pori), Finnish Transport Agency, Finland (Helsinki), Port of Gävle, Sweden (Gävle), Port of Rauma Ltd, Finland (Rauma)



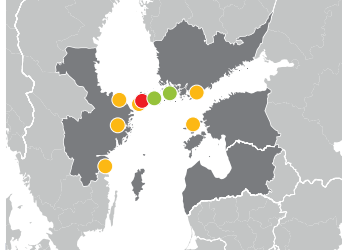
Smart Marina

Contemporary harbours with soft energy technology

To plan a trip spontaneously, it is crucial to be able to find reliable information. The availability of highly valued harmonized standards like Blue Flag and Blue Star Marina in a harbor, usually influences travelers in their choice of (next) destination.

Maritime and coastal destinations are a growing trend among families, youth and middle-aged tourists. Visitors' expectations towards service quality is very high. Keywords are clean facilities, service variety, availability of modern technologies, safety etc. The quality of facilities differs in harbors substantially. Uncoordinated small harbors' actions are not sufficient to improve the service level.

The aim of the project is to help harbors transform into attractive and modern ports by connecting harbors & other relevant actors across CB borders to jointly enhance the level of services. The motto of the entire project is: "Opening the door to a destination". As a result of the project, a Visitor-friendly harbor is opened not only for (boat)tourists but also for hikers, cyclists, families from the village nearby/beyond. Dockside pedestals should provide 2-or 3-phase electricity along with drinking & non-potable water. Laundry, modern mooring, ship logs, BerthMaster online etc will be a definite part of available services in harbors.



Specific Objective 3.2. Improved services of existing small ports to improve local and regional mobility and contribute to tourism development

Subprogramme Archipelago and Islands

Call Call 3 Regular projects

Duration 02/2018 - 01/2021

Total Project Budget (€) 8 427 979

ERDF 6 410 220

Lead Partner Åland Development Center, Finland

LP Contact www.auab.ax

Project Partners Valdemarsviks municipality, Sweden (Valdemarsvik), Östhammar Municipality, Sweden (Östhammar), The Stockholm Archipelago Foundation, Sweden (Stockholm), Novia University of Applied Science, Finland (Ekenäs), Hiiu Municipality, Estonia (Kärdla)

Associated Partners Nordic Archipelago Cooperation, Finland (Nagu), Enterprising Archipelago, Finland (Sottunga), The Åland Society for Nature and Environment, Finland (Mariehamn)

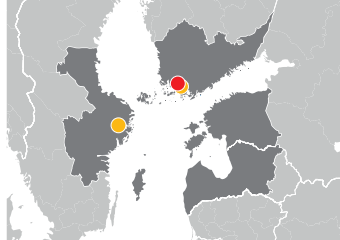
Sustainable Gateways

Small ports - sustainable gateways to coastal national parks

The Sustainable Gateways (SG) project develops small boat harbors located in national parks and nature reserves in the Finnish (4 harbors) and Swedish (3 harbors) outer archipelagoes. With the project's support, these harbors become sustainable and attractive gateway destinations for boaters.

The project focuses on environmental sustainability, customer satisfaction, harbor operator's business knowledge and increased regional nature-tourism and it is divided into four inter-linked work packages: 1) investments, 2) development of services and business, 3) marketing and networking and 4) environmental awareness. Investments, in the harbors, mean improved accessibility and safety thanks to increased pier capacity and better harbor planning. Environmental protection equipment such as waste water treatment and waste management facilities are updated. New service facilities will be built for visitors, e.g. saunas and service buildings. The operational development component improves the managerial skills of the harbor operators and encourages them to offer new services. This will be achieved by joint training, exchange of experiences and harbor-specific business development. Joint marketing increases visibility and attractiveness of the networked gateway harbors. Environmental information is distributed to visitors in the harbors to influence their behavior. These activities will increase mobility and nature-based tourism in the outer archipelagoes in a sustainable way.

The seven localities that the project is developing, will showcase sustainable and customer-oriented harbor management. In addition, the results of the project will be summarized into a Sustainable Harbor Development Manual to be used in developing other harbors with similar challenges and aims. Thus, the results may be disseminated to other harbors contributing to their development and environmental protection.



Specific Objective 3.2. Improved services of existing small ports to improve local and regional mobility and contribute to tourism development

Subprogramme Archipelago and Islands

Call Call 3 Regular projects

Duration 02/2018 - 04/2020

Total Project Budget (€) 1 730 630

ERDF 1 297 973

Lead Partner Parks & Wildlife Finland (Turku)

LP Contact www.metsa.fi

Project Partners University of Turku, Finland (Turku), The Stockholm Archipelago Foundation, Sweden (Stockholm)



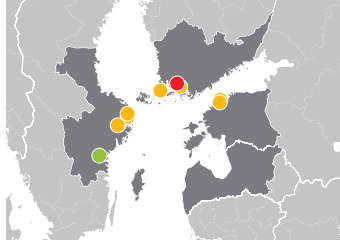
BATSECO-BOAT

Best Available Technologies of Sewage Collecting for Boat Tourism

Small boat ports located in the Baltic Sea are fascinating for both national and international visitors; many of them, explore the area using small leisure boats. As members of HELCOM, the countries around the Baltic Sea aim to reduce the release of latrine sewage from boats into the sea. Moreover, the possibility of emptying latrine sewage from leisure boats can be considered a fundamental service for boaters, which, when neglected, has a crucial impact on boaters' comfort. However, this service, suffers from the lack of easily accessible and functional sewage pump-out stations, non-harmonized sewage collecting equipment and lack of easily accessible information regarding location and functionality of pump-out stations.

To provide tourists with better sewage services for boats, , BATSECO-BOAT aims to improve the capacity and service level of latrine sewage collection in small boat ports in Estonia, Finland, Sweden and Åland. Within the project framework, a strategy containing cross-regional guidelines to inform decision-making on this issue will be developed. This strategy will be based on information about i) institutional landscape and legislation, ii) traffic flow of leisure boats, iii) costs, iv) best available technology for waste handling, v) analysis of latrine sewage, and vi) estimation of sewage flows.

Digital tools and guidelines will be developed, informing local investment and the four investment packages, leading to improved services in twenty Central Baltic ports. An important project output will be a document providing guidelines and lessons learnt, which can be used to replicate investments in other regions after the project completion. The project will also conduct a scoping study to create a digital map, showing the network of functional sewage collection services. This map will facilitate cross-border mobility across the Central Baltic region.



Specific Objective 3.2. Improved services of existing small ports to improve local and regional mobility and contribute to tourism development
Subprogramme Archipelago and Islands

Call Call 3 Regular projects

Duration 12/2017 - 02/2021

Total Project Budget (€) 1 480 759

ERDF 1 144 439

Lead Partner

University of Turku, Finland

LP Contact www.utu.fi

Project Partners Keep the Archipelago Tidy, Finland (Turku), Campus Roslagen, Sweden (Norrtälje), Ecoloop Ltd, Sweden (Stockholm), Municipality of Norrtälje, Sweden (Norrtälje), Keep Estonian Sea Tidy, Estonia (Tallinn), Brändö Municipality, Finland (Åva), Viimsi Municipality, Estonia (Viimsi vald)

Associated Partners The Swedish Transport Agency, Sweden (Norrköping)

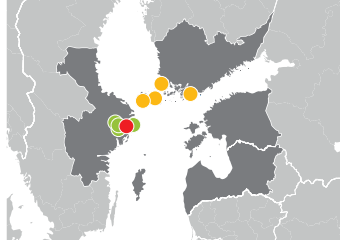
SEASTOP

Modern ports in historic waters

SEASTOP enables infrastructure investment in 21 small ports in the Stockholm/Åland/Turunmaa archipelago. The main common challenge is to develop and broaden tourism and overnight stays by upgrading the service levels in the ports.

In order to make ports more attractive to visitors, priority is given to the most needed investments, taking into account the Central Baltic programme target values and result indicators. The cross-border approach enables the members to develop joint marketing and joint upgraded standards of quality for port services and safety. SEASTOP is related to the long joint history of the archipelago islands in the Central Baltic area. Many of the ports were traditional stopover places on the “King Valdemar’s sailing route” in the 13th century. SEASTOP is now engaging 5 experienced and financially strong project partners and 21 existing small ports in Sweden, Finland and the Åland islands. Apart from the partners, Stockholm County Administrative Board, Government of Åland and the municipalities of Österåker and Norrtälje will co-finance the project.

The planned investments will lead to around 550 meters of new floating jetties, upgraded environmentally sustainable facilities, such as water, toilets, electricity, showers, saunas, boat toilet discharge systems and waste recycling. The project will, amongst other things, lead to the development of 300 new mooring places and new water and sewage systems. The investments will transform the participating ports into attractive stops, as well as enhance regional economy and mobility.



Specific Objective 3.2. Improved services of existing small ports to improve local and regional mobility and contribute to tourism development

Subprogramme

Archipelago and Islands

Call Call 3 Regular projects

Duration 12/2017 - 11/2020

Total Project Budget (€) 4 137 070

ERDF 3 102 802

Lead Partner Värmdö Municipality, Sweden (Gustavsberg)

LP Contact www.varmdo.se

Project Partners Mariehamn Town, Enterprising Archipelago, Finland (Sottunga), Peterzéns Oy, Finland (Kustavi), Bromarv Village Council (Bromarv)

Associated Partners Stockholm archipelago Foundation, Sweden (Stockholm), Swedish sea rescue association, Sweden (Möja), Stockholm maritime center, Sweden (Stockholm), Swedish Sailingship Association, Sweden (Stockholm)

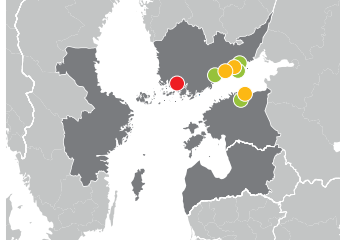
REFEC

Reinforcing Eastern Finland-Estonia Transport Corridor

The heavy vehicle traffic (trucks and trailers) on ferries over the Gulf of Finland has been ever increasing and the trend is estimated to continue. There are two ferry routes between Finland and Estonia (Helsinki-Tallin and Hanko-Paldiski). Remarkable part of this heavy vehicle traffic takes place between Eastern Finland and Eastern Estonia. Currently the trucks need to drive via Helsinki-Tallinn, or via Hanko-Paldiski, even longer route. The best solution to increase the performance of the Eastern Finland - Eastern Estonia corridor is to establish a ferry connection between the ports of Loviisa (FI) and Kunda (EE).

The project aims at reinforcing the establishment of the Eastern Finland-Eastern-Estonia transport corridor. The project outputs are focused mainly on concrete measures to support the establishment of the Loviisa-Kunda ferry connection. This includes business model(s) with potential shipping companies, port operatives and investment plans, as well as, a roadmap to comply with the needed licences and regulatory requirements, best practise to be transferred from similar connections in the BSR, ferry scheduling and route option plans, marketing plan and the organization of events to promote the connection. Furthermore, the cargo transport potential of the corridor is analysed and the impact of the developed corridor is verified (reduced travel time, volume of corridor users and the feasibility of a Loviisa-Kunda connection).

In addition to the faster and more fluid transports between eastern parts of Finland and Estonia there are other benefits brought about by the activated transport corridor: the traffic to/from Eastern Finland that uses the Via Baltica would benefit from a more direct connection as well. It will also relieve the city centres of Tallinn and Helsinki from the pressure of a growing heavy traffic (traffic jams, emissions, noise, dust) The decreased mileage in transports means also less CO2 emissions.

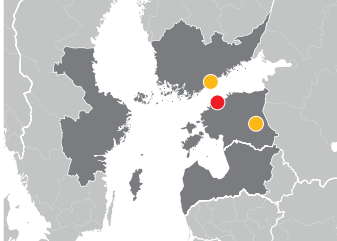


Specific Objective 3.1. Improved transport flows of people and goods
Subprogramme Southern Finland - Estonia
Call Call 3 Regular projects

Duration 12/2017 - 05/2020
Total Project Budget (€) 728 192
ERDF 569 664

Lead Partner University of Turku, Finland (Turku)
LP Contact www.utu.fi

Project Partners City of Loviisa, Finland, Kunda Nordic, Estonia (Kunda), Posintra Ltd, Finland (Porvoo)
Associated Partners Port of Loviisa Ltd, Finland (Loviisa), Lovisa Forwarding & Stevedoring, Oy The Federations Stevedore in Lovisa Ab, Finland (Loviisa), Lääne-Viru County Government, Estonia (Rakvere), Schenker Oy, Finland (Vantaa)



E-TICKETING

Creation of the interoperability between the electronic ticketing systems in Estonia and Finland

Estonia and Finland are one of the most closely connected countries in Europe. Finland is the biggest foreign labour market for Estonians and Estonia is one of the most popular tourism destinations for Finns. The influx of people and goods have constantly been growing during the last decade. Projections show that these numbers are going to increase. A great deal of these passengers (approx. 60%) use public transportation, both for work and leisure. This means purchasing at least three different types of tickets – local tickets in either Helsinki, Tallinn or Tartu, and a ferry ticket. This is time-consuming.

The journey will get even more fragmented if the passengers need to travel outside the capital regions. Further destinations, such as Tartu, have their local ticketing systems, which means another purchase. The e-ticketing project aims at connecting ticketing systems in Tallinn, Tartu, and Helsinki to enable seamless travelling. The project aims at taking this challenge with three interconnected actions: Firstly, the conceptual business model will be laid out. Secondly, the system will be developed and tested. Thirdly, project partners will pilot the joint ticketing system in Tallinn, Tartu, and Helsinki.

As a result, it is expected that the time spent on travelling can be reduced approximately by 5%.

Specific Objective 3.1. Improved transport flows of people and goods
Subprogramme Southern Finland - Estonia
Call Call 3 Regular projects

Duration 05/2018 - 04/2021
Total Project Budget (€) 2 610 821
ERDF 2 049 071

Lead Partner City of Tallinn, Estonia
LP Contact www.tallinn.ee

Project Partners Helsinki Region Transport Authority, Finland (Helsinki), Tartu City Government, Estonia (Tartu)

Priority 4
Skilled and socially inclusive region



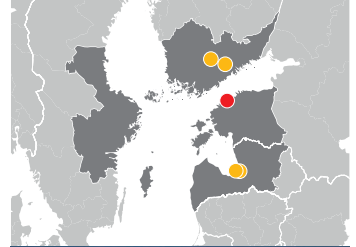
PAD

Positive attitude development - access to labour market for young adults with mental health problems

The project PAD aims at influencing public attitudes to become more positive towards young people suffering from mental health and social problems. The idea is to improve social inclusion of young people with mental problems, especially through better access to labour market, and decrease Stigma concerning mental health problems.

The main activities will take place in two countries: in the cities of Helsinki, Vantaa, Espoo in Finland and Tallinn, Haapsalu, Keila in Estonia. The project will organize face-to-face meetings with citizens and employers and educational trainings for professionals. The purpose of the activities is to develop the target group's skills in interacting with their social environment. The project will launch a media campaign and an informative website to reach the public.

As a result of the project the employment possibilities for the young people with mental health problems are expected to improve, attitudes increase by 20% to become more positive among employers and citizens. A survey will be conducted in the end of the project to measure the impact. All in all, the project will support youth employment and decrease challenges concerning social exclusion.



Specific Objective 4.1 More people benefiting from stronger Central Baltic communities

Subprogramme Southern Finland - Estonia

Call Call 1 Small projects

Duration 5/2015 - 4/2017

Total Project Budget (€) 269 068

ERDF (€) 209 715

Lead Partner Arcada University of Applied Sciences, Finland (Helsinki)

LP Contact www.arcada.fi

Project Partners Tallinn University, Estonia (Tallinn)

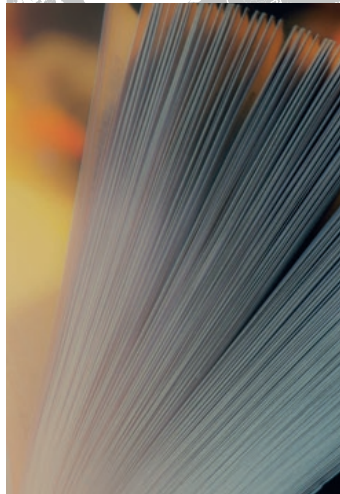
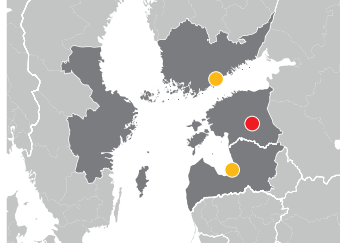
PIM

Development of Parent Involvement Models for Bilingual Pre- and Primary School

The PIM project aims at supporting bilingual education for children in Russian-speaking minority groups in Estonia, Finland and Latvia by developing parent involvement models for bilingual learning process.

The main responsibility in bilingual education in the partner countries has been on the teachers and schools. The project will enable the Russian-speaking school communities to improve their home-school cooperation. In practice the project will combine traditional models of parent involvement with bilingual education specific themes and methods. The project will also take into account the context of old and new immigrants.

As a result of the project home-school cooperation and awareness about multicultural education are both expected to increase. The process, in turn, will have a direct impact on broader Russian-speaking communities gathered around the schools in the same town, and the same region. Through the schools, the changes can be initiated from the grass root level, but the overall influence will have an impact on the whole society.



Specific Objective 4.1 More people benefiting from stronger Central Baltic communities

Subprogramme Central Baltic
Call Call 1 Small projects

Duration 9/2015 - 6/2017

Total Project Budget (€) 204 865
ERDF (€) 167 241

Lead Partner University of Tartu, Estonia (Tartu)

LP Contact www.narva.ut.ee

Project Partners University of Helsinki, Finland (Helsinki), University of Latvia, Latvia (Riga)



Let us be active!

Social inclusion of older people through volunteering in Estonia, Latvia and Finland

Let us be active!

Social inclusion of older people through volunteering in Estonia, Latvia and Finland

The project 'Let us be active!' aims at decreasing social exclusion and loneliness among older people in Estonia, Finland and Latvia through involving them in voluntary activities. The problem is accurate as the population of people in retirement age is growing and loneliness influences negatively their overall health and wellbeing. The idea is to develop a programme that will allow older people to stay active and participate in their communities by volunteering.

The project will analyse existing activities available for seniors, examine their needs in the area of volunteering and produce guidelines for social and health care workers to promote and support voluntarism of the older people. Workshops, meetings and events for seniors, health care workers and social workers will be organized to develop the new form of voluntary activities. At the same time, the information platform in each city will be established and is to be managed by seniors themselves. The experts from the World Health Organization support the project implementation.

As a result of the project social inclusion of older people is expected to improve. The project activities will contribute to the improvement of the health and well-being of older people and their communities. It is expected that at least 100 older people and their families in every municipality will be influenced by the results of the project. Ultimately, the project will strengthen and support the resilience of the communities in the Baltic Sea Region, contributing to the programme's objective.

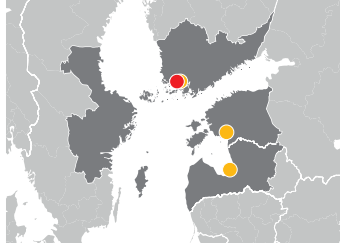


Photo: Joel Jyränti, Heli Kallasmaa and City of Riga

Specific Objective 4.1 More people benefiting from stronger Central Baltic communities

Subprogramme Central Baltic
Call Call 1 Small projects

Duration 5/2015 - 12/2016

Total Project Budget (€) 264 007

ERDF (€) 208 054

Project WWW www.letusbeactive.eu

Lead Partner Baltic Region Healthy Cities Association, Finland (Turku)

Project Partners Riga City Council, Latvia (Riga), City of Pärnu, Estonia (Pärnu), City of Turku, Finland (Turku)

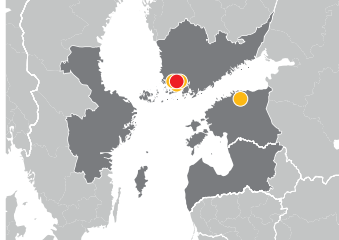
REGI

Reacting to Growing Immigration - Strengthening social inclusion of Estonian migrant families in Finland and Estonia

The project REGI supports Estonian migrant families divided between Estonia and Finland due to work-related reasons. As migration from Estonia to Finland has grown in the last 5-10 years it has brought along a variety of social issues, for example unhealthy or broken families. The project builds stronger and healthier communities and societies both in Finland and in Estonia.

During the project professionals together with the families will develop solutions best suitable for supporting families from Estonia and ways to solve the related problems. The activities focus on training the professionals and volunteers to notice challenges related to work migration before they grow to be problems. This is a multi-directional process in which family-members not only receive support, but act as supporters in group activities. The activities include sharing first-hand information and skills on how to develop effective support methods.

As a result of the project the wellbeing of families and their members improves and wholesomeness increases on the community level. Successful implementation of project activities increases the number of communities with improvements as the piloted methods and practices are disseminated and adopted throughout Estonia and Finland. The developed methods are universal and transferable and can be used also in other countries.



Specific Objective 4.1 More people benefiting from stronger Central Baltic communities

Subprogramme Southern Finland - Estonia

Call Call 1 Small projects

Duration 9/2015 - 8/2017

Total Project Budget (€) 252 250

ERDF (€) 194 765

Project WWW

regiproject.weebly.com

Lead Partner Turku University of Applied Sciences, Finland (Turku)

Project Partners Tallinn University Rakvere College, Estonia (Rakvere), South-West Finland's Estonian Center, Finland (Turku), Baltic Region Healthy Cities Association, Finland (Turku)

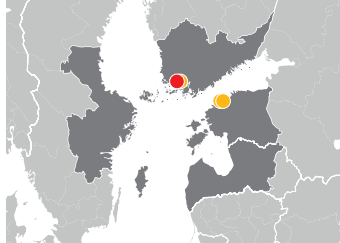
SIPPE

Promoting Social Inclusion of Elderly through Well-being Parties

The project SIPPE aims at increasing the well-being and social inclusion of the elderly by offering them better possibilities for voluntary work and participation in the society through social activities. The idea is to prevent problems like loneliness, health loss and depression by developing cost-effective methods to activate the elderly and, in this way, maintain their well-being.

In practice the project develops a concept called the “well-being party” where the model comes from network marketing businesses (e.g. Tupperware) but has no monetary aspect involved. Voluntary people are trained to hold parties for the elderly people’s own networks in their own homes or other places under different themes like healthy eating, physical activities and social participation possibilities. The project hopes to trigger a snowball effect where participants of the parties become encouraged to host own parties and even become registered volunteers themselves.

As a result of the project elderly communities both in Turku and in Tallinn have encountered several improvements. Participation of the elderly in communal voluntary activities has increased and thus also the social inclusion of the elderly has improved. SIPPE activities strengthen local safety networks and elderly are more capable to take care of themselves as well as of other older people in the community.



Specific Objective 4.1 More people benefiting from stronger Central Baltic communities

Subprogramme Southern Finland - Estonia

Call Call 1 Small projects

Duration 9/2015 - 8/2017

Total Project Budget (€) 269 231

ERDF (€) 209 113

Project WWW sippe.turkuamk.fi

Lead Partner Turku University of Applied Sciences, Finland (Turku)

Project Partners The Association for Vicinity Services in Turku, Finland (Turku), Tallinn Health Care College, Estonia (Tallinn), The Self-Help and Advisory Association for Senior Citizens, Estonia (Tallinn)

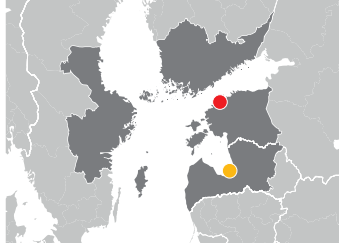
TheatreEx

Theatre Expanded

The project Theatre Expanded aims at raising competitiveness of freelance artists and independent companies. The idea is to develop target group's entrepreneurial competence and establish international networks and innovative models.

This project will offer training courses to nearly 1000 people in Estonia and Latvia during a two-year period. The courses are organized for both local and joint audiences. In addition, two dozens of producers are expected to raise their qualification in process leading, budgeting, and marketing for leading international co-productions in the Performing Arts Sector. Another priority of the project is to teach creative artists how to find new ways to put their professional skills to practice. The project activities are expected to lead to increased confidence and creativity as well as increased professional satisfaction.

As a result of the project new networks and stronger ties between communities are created. The project activities will support more active regional collaboration, especially between Latvia and Estonia, encourage more theatre managers working professionally on the independent theatre scene and increase the value of arts in the society.



Specific Objective 4.1 More people benefiting from stronger Central Baltic communities

Subprogramme Central Baltic
Call Call 1 Small projects

Duration 8/2015 - 7/2017

Total Project Budget (€) 235 419

ERDF (€) 200 106

Lead Partner Foundation Vaba Lava, Estonia (Tallinn)

LP Contact www.vabalava.ee

Project Partners New Theatre Institute of Latvia, Latvia (Riga)



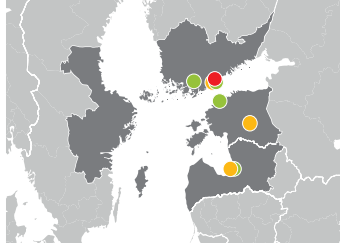
DeDiWe

The Developer of Digital Health and Welfare Services

The project DeDiWe aims at developing digital health and welfare services by creating a new curriculum. The curriculum is built on an e-learning platform to support professionals to live and work in a digital society and to offer citizens easy accessible e-Health services.

The project pilots the new curriculum in Finnish, Estonian and Latvian vocational education programmes. The new curriculum promotes multi-professional studying with the “Learning by Developing” pedagogical model, which gives students opportunities to learn together in real working life. The studies take place mostly on an e-learning platform, combined with cross-border co-creation and cooperation. In the next phase, the curriculum can be spread to all 27 health, social and IT study programmes and 5750 students in partner schools. It can also be spread to the 30 VET/UASs in partner countries and possibly wider in the Central Baltic region and the EU.

As a result of the project not only a new curriculum is created but also students have a possibility to implement development projects that are useful for the citizens. The core curriculum is the same for all students, which allows for a variety of professionals to work together. Each partner has its own set of students, but they work on the same e-learning environment. All in all, the project enhances Central Baltic business ecosystem development and creates better opportunities for public-private partnership, therefore supporting eHealth companies.



Specific Objective 4.2. More aligned vocational education and training programmes in the Central Baltic region

Subprogramme Central Baltic
Call Call 1 Regular projects

Duration 9/2015 - 2/2018

Total Project Budget (€) 451 412

ERDF (€) 347 128

Project WWW

<http://rdi.arcada.fi/dediwe/en/>

Lead Partner Laurea University of Applied Sciences Ltd, Finland (Vantaa)

Project Partners Arcada University of Applied Sciences Ltd, Finland (Helsinki), Red Cross Medical College of Riga Stradins University, Latvia (Riga), Tartu Health Care College, Estonia (Tartu)

Associated Partners Hospital District of Helsinki and Uusimaa (HUS), Lohja Hospital Area, Finland (Lohja), East-Tallinn Central Hospital, Estonia (Tallinn), State Emergency Medical Service, Latvia (Riga), City of Helsinki Department of Social Services and Health Care, Finland (Helsinki)

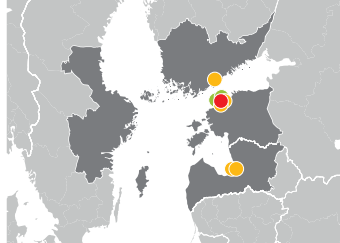
ITSVET

ICT Security in VET

The project ITSVET aims at developing a model for providing ICT security skills on the vocational education level. Reports show that demand for ICT security professionals has grown faster over the past five years than demand for other ICT jobs. Thus, the objective of the project is to meet the needs of the region's employers through developing a VET model for the ICT security specialists to reduce the skill gap of the labour market in the Central Baltic region. The consortium brings together ICT employers, vocational education institutions and vocational education regulatory bodies.

In practice the project performs a research to identify the needed competences for ICT security specialists in the Central Baltic labour market. Based on the results the project develops a new curriculum for vocational education schools in Estonia, Latvia and Finland. To make this a ready-to-go model, learning materials and a teacher's guide will be developed and the future teachers of this curriculum will be trained. All three participating vocational schools will run a pilot of the developed curriculum in their school.

Developing a joint curriculum will lead to further integration of the Central Baltic region labour market due to enhanced mobility of students and employees as well as raised awareness about the developed curriculum.



Specific Objective 4.2. More aligned vocational education and training programmes in the Central Baltic region

Subprogramme Central Baltic
Call Call 1 Regular projects

Duration 12/2015 - 03/2019
Total Project Budget (€) 1 160 123
ERDF (€) 966 050

Lead Partner The Technology Education Support Foundation, Estonia (Tallinn)

LP Contact www.tehnikaharidus.ee

Project Partners BCS Koolitus AS, Estonia (Tallinn), Tallinn Polytechnic School, Estonia (Tallinn), Riga Technical College, Latvia (Riga), Helsinki Business College, Finland (Helsinki), The Latvian Information and Communications Technology Association - LIKTA, Latvia (Riga), Foundation Innove, Estonia (Tallinn)

Associated Partners Estonian Qualifications Authority, Estonia (Tallinn), Estonian Association of Information Technology and Telecommunications, Estonia (Tallinn)

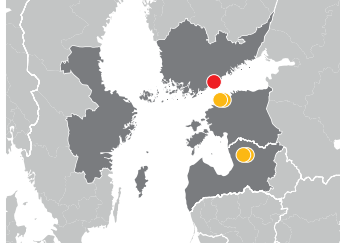
EDU-SMEs

Curriculum alignment and cross-border cooperation with SMEs

The project EDU-SMEs aims at developing a better matching between the graduates' competencies and companies' needs in the Central Baltic region. The project idea lies in aligning partner institutions' curricula in business management and entrepreneurship.

In practice new knowledge and pedagogical approaches are integrated in the existing curricula and students will gain new competencies especially in the field of internationalization of small and medium-sized companies (SMEs). The project main activities help to integrate classroom learning and practice in the workplace by strengthening cooperation between vocational education training institutions and SMEs through real-life assignments. The project also supports individual SMEs in their internationalization through cross-border activities that link SMEs with faculty and students in their target markets. The activities include a jointly developed and delivered e-learning course on internationalization of SMEs.

As a result of the project the curricula in business management and entrepreneurship are aligned and cross-border cooperation with SMEs is expected to increase. The project will also produce useful materials and support for other vocational education and training programmes and SMEs in the region.



Specific Objective 4.2. More aligned vocational education and training programmes in the Central Baltic region

Subprogramme Central Baltic
Call Call 1 Small projects

Duration 9/2015 - 2/2017

Total Project Budget (€) 256 692

ERDF (€) 209 058

Project WWW edusme.eu

Lead Partner Arcada University of Applied Sciences, Finland (Helsinki)

Project Partners Vidzeme University of Applied Sciences, Latvia (Valmiera), Estonian Entrepreneurship UAS (Erahariiduskeskus Ltd), Estonia (Tallinn), TTK University of Applied Sciences, Estonia (Tallinn), Valmiera Business and Innovation Incubator, Latvia (Valmiera)



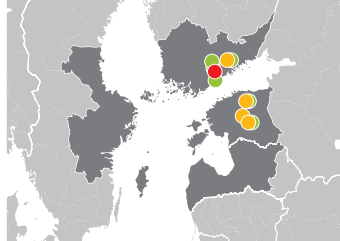
SAFHY

Safety and Hygiene - safer environment

The project SAFHY aims at developing labour skills of cleaning service and health care services in Estonia and Finland by aligning curricula and training material both for vocational education as well as the labour market. The project promotes learning and professional skills in these two sectors to reduce hygiene risks and infections while increasing safer environments in health care and cleaning services.

Health care and hygienic cleaning together is one of the highest topics in the whole world and its importance is increasing because of Ebola-type infections. The project promotes using digital network solutions for developing skills and avoiding global diffusion of these diseases. In practice the project improves two curricula and training methods for vocational education. The project also designs and implements pilot education to health care and cleaning services education by using digital learning platform.

As a result, the project aligns and enriches two curricula and produces cross-border multilingual digital learning material for students both in cleaning services and health care. Digital learning material improves students' skills considering hygiene and safer work environments as well as language skills. It also improves their competencies to enter the profession of their choice. Digital Learning material gives multilingual support for learners and teachers and even more for working leaders and workers. It develops working and language skills, and also improves better matching working opportunities.



Specific Objective 4.2. More aligned vocational education and training programmes in the Central Baltic region

Subprogramme Southern Finland - Estonia

Call Call 1 Regular projects

Duration 9/2015 - 12/2017

Total Project Budget (€) 1 184 999

ERDF (€) 921 249

Project WWW safhy.eu

Lead Partner Keuda Group, Finland (Järvenpää)

Project Partners Co-operative Digital Robot, Finland (Kouvola), OÜ Puhastusekspert, Estonia (Väike-Maarja), Tartu Health Care College, Estonia (Tartu), Järva County Vocational Training Centre, Estonia (Paide)

Associated Partners Mestaritoiminta Oy Järvenpää City, Finland (Järvenpää), SOL, Finland (Helsinki), Nurmijärvi municipality, Finland (Nurmijärvi), Järvenpää Municipality, Finland (Järvenpää), Tartu University Hospital, Estonia (Tartu), Järva County Hospital, Estonia (Paide)



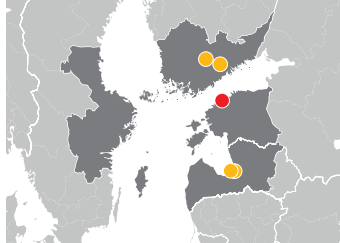
EDU-RAIL

Harmonised and Modernised Multidisciplinary Railway Education

The project EDU-RAIL aims to reduce fragmentation of railway education in the CB region. That goal is achieved by harmonising and modernising railway engineering, transport and logistics vocational education and training programmes.

In practice the project jointly develops aligned specialisation modules that take into account the needs of the regional labour market, including shared challenges of further integration with European railway system and joint regional aspects. The harmonised and modernised specialisation modules allow the railway institutions to better educate specialists for the regional needs and demands in order to enable smoother cross-border rail transportation within the common transport area.

As a result of the project five multipurpose specialisation modules are designed for full-time students and for in-service training programmes. The project raises the quality of railway vocational education and training programmes in the region and enhances more efficient use of resources of each partner organisation (laboratories, railway simulators, etc).



Specific Objective 4.2. More aligned vocational education and training programmes in the Central Baltic region

Subprogramme Central Baltic
Call Call 1 Regular projects

Duration 10/2015 - 9/2018
Total Project Budget (€) 449 684
ERDF (€) 358 402

Lead Partner TTK University of Applied Sciences, Estonia (Tallinn)
LP Contact www.ttktk.ee

Project Partners KRAO, Finland (Kouvola), Transport and Telecommunication Institute, Latvia (Riga), University of Applied Sciences, Finland (Hämeenlinna), Riga Technical university, Latvia (Riga)

EmpowerKids

Health education and social advice for low-income families with young children

EmpowerKids addresses social exclusion and inadequate health information and social advice among the children in low-income families in Estonia, Finland and Latvia. Currently, health and social workers lack methods and approaches for promoting daily healthy choices for young children in families with low socio-economic status. There is need for more appealing methods to improve the situation in vulnerable families, which can be found in cooperation between the cities and universities.

Traditionally, low income families and young children are considered a difficult target group to be reached with the health information, even if they need support the most. Research confirms that socioeconomic status of the family is directly correlated with the experienced health of its members, as well as with social inclusion and participation in the labour market. People with lower education and income experience poorer health, their social participation is lower, and they are more often excluded from the labour market. Their children's health, social inclusion and future socioeconomic prospects are strongly affected.

To improve matters, the project will be working with an interview-based interactive tool that facilitates health and social advices for children and their families. The EmpowerKids Tool, developed by all partners with the methodological support of University of Turku, will utilize targeted counselling and interventions, according to the real needs. The cross-border cooperation will allow partners to learn from each other, share experiences and support each other with their specific expertise.

The project results will be widely distributed through the existing and developing networks in Central Baltic and beyond. The results include children who are able to make healthy choices in their daily lives, improved quality of health promotion, social work in participating municipalities, enhanced social inclusion of children from vulnerable groups, increased knowledge of health care personnel, social workers and kindergarten teachers about the empowering tools and methods.



Specific Objective 4.1. More people benefiting from stronger Central Baltic communities

Subprogramme Central Baltic
Call Call 2 Small projects

Duration 04/2016 - 3/2018

Total Project Budget (€) 261 460
ERDF 207 757

Lead Partner Baltic Region Healthy Cities Association

LP Contact www.marebalticum.org

Project Partners University of Turku, Finland (Turku), Tallinn University Rakvere College, Estonia (Rakvere), Jurmala City Council, Latvia (Jurmala), Welfare Department of Jurmala City Council, Latvia (Jurmala)

Active Age

Equal access of long-term unemployed seniors to labour market in rural areas

The common challenge of the Setomaa region in Estonia and the Engure and Ape regions in Latvia is to improve the social well-being of long-term unemployed local seniors.

Decreasing population in rural areas is affecting negatively the local labor market. It's critical that older generations stay economically active for longer. Currently 950 people belonging to the working age population in Setomaa, Ape and Engure regions have not worked in over a year. Many of them are older than 55 and have a weaker position in the labor market due to their age.

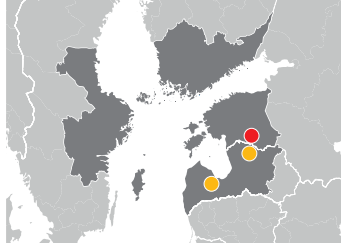
To tackle this problem, partners located in Estonia and Latvia decided to join their efforts, to develop a joint approach/action plan based on the real needs of unemployed seniors from cross-border areas.

The aim of the project is to create better possibilities to access the local labor market for long-term unemployed seniors aged 55+ from Setomaa, Engure and Ape regions. The objective will be achieved through the implementation of training activities for ca 100 unemployed seniors.

Participants will improve their skills and knowledge according to the real needs of local public and private sector. People with lower motivation and self-confidence will be both mentored and encouraged to participate in support groups.

In this context a People-to-people approach will be used, thus enabling seniors from 3 regions to meet and interact with each other, to learn from each other's experiences and to develop ideas for the future.

Local municipalities play a key role in this process; they have identified a large group of people aged 55+ with low or no income, but having potential for participation in the local labor market.



Lotte Meijer

Specific Objective 4.1. More people benefiting from stronger Central Baltic communities

Subprogramme Central Baltic
Call Call 2 Small projects

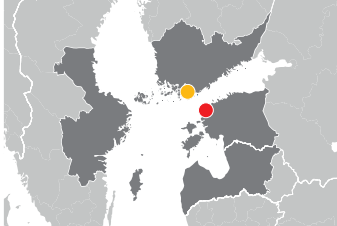
Duration 3/2016 - 2/2018

Total Project Budget (€) 197 552
ERDF 167 919

Lead Partner The Union of Setomaa Rural Municipalities, Estonia (Võru county)

LP Contact www.setomaa.ee

Project Partners Ape Municipality Council, Latvia (Ape, Ape municipality)
Engure municipality, Latvia, (Smārde, Engures novads)



YOUTH-SPORT-VOL

Better access to labour market for young unemployed through cross-border sport volunteers model

The Central Baltic economies are experiencing high youth unemployment rates; it's a challenge for young graduates to enter the labor market. The main obstacle is not so much identifiable with lack of education rather with lack of experience. One opportunity to receive work experience is to do voluntary work.

According to a LinkedIn research, 41% of managers hiring through LinkedIn consider volunteer work as equally valuable as paid work experience when evaluating candidates. In the EU, volunteer activities related to sport attract 20 million people.

Currently, in the CB region, access to volunteering opportunities is dispersive: young people could more effectively and systematically provide their contribution as sports volunteers if information concerning different opportunities for volunteering were more easily available.

The aim of this project is to increase young people opportunities to access the labor market, by developing and piloting a cross-border sport volunteering model in Southern-Finland and Estonia through the following activities:

- 1) Development of a cross-border sport volunteering model that will be tested by 500 young unemployed during different sport events in Estonia and Southern-Finland;
- 2) Development and pilot of an innovative ICT-based platform to unite sport volunteers and promote sport volunteering opportunities in Southern-Finland and Estonia;
- 3) Set up a promotion campaign and awareness-raising seminars at vocational schools/universities. Organize a large-scale conference (forum) to promote sport volunteering possibilities as a labor-market advantage for young unemployed.



Specific Objective 4.1. More people benefiting from stronger Central Baltic communities

Subprogramme Southern Finland - Estonia

Call Call 2 Small projects

Duration 2/2016 - 1/2018

Total Project Budget (€) 255 906

ERDF 209 995

Lead Partner Sport Year Foundation, Estonia (Tallinn)

LP Contact www.spordiaasta.ee

Project Partners Haaga-Heelia University of Applied Sciences, Finland (Helsinki)

The logo consists of the word "CROSS" in a bold, blue, sans-serif font, centered within a white rectangular box with a subtle drop shadow.

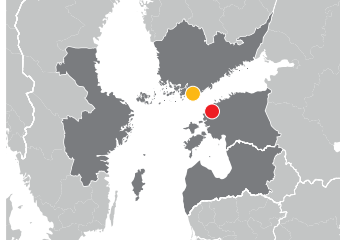
CROSS

Cross-border cooperation on mentoring and peer support for immigrants

The main objective of the CROSS project is to support the integration of unemployed immigrants who have lived in Estonia 5 years or longer, including second-generation immigrants, and Estonian immigrants living in Finland, as well as to involve Estonian and Finnish organisations that are ready to hire people from different national backgrounds.

Project activities are developed and carried out in close cross-border cooperation. Both in Estonia and Finland up-to-date understanding of immigrants' integration needs and requirements is essential. The Finnish partner will share best practices on mentoring immigrants and the Estonian partner will provide expertise in developing a peer support that suits specifically Estonians living in Finland.

Diversity-based activities will be carried out for organisations in Estonia and Finland. With the help of these activities, the organisers aim to raise awareness of multicultural working environments, thereby leading to an increase in the willingness of organisations to recruit people of different nationalities.



Specific Objective 4.1. More people benefiting from stronger Central Baltic communities

Subprogramme Southern Finland - Estonia

Call Call 2 Small projects

Duration 4/2016 - 3/2018

Total Project Budget (€) 174 297

ERDF 140 458

Lead Partner Integration Foundation, Estonia (Tallinn)

LP Contact www.meis.ee/eng

Project Partners Föreningen Luckan r.f., Finland (Helsinki)



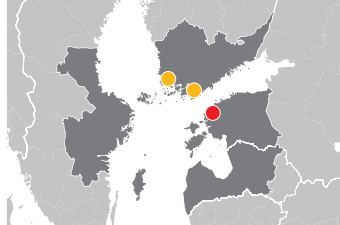
FEM (Female Estonian Migrant)

Unlocking the Potential of Estonian Migrant Women

This project identifies the main challenges Estonian women who have immigrated to Finland have to face; compared to local residents they are socially and economically more vulnerable and face more problems often difficult to foresee. So far the issue has not been dealt with a systematic approach.

The project will set up peer group sessions in Finland and Estonia using the Peer Counselling technique. The aim is to strengthen the sense of community in the target group and to enable the members to communicate and share their experiences. A future framework will also be established to enable a discussion on common issues and problems.

Project activities include a collection of data, the establishment of three peer groups of Estonian female immigrants in Turku, Helsinki and Tallinn, the organisation of peer group events throughout the project period, the establishment of walk-in info points in Turku and Helsinki, communication activities including a Facebook community and a project webpage. The Turku and Helsinki regions were selected due to the density of Estonian population and because they host operational partner organisations working with Estonians.



Specific Objective 4.1. More people benefiting from stronger Central Baltic communities

Subprogramme Southern Finland - Estonia

Call Call 2 Small projects

Duration 4/2016 - 3/2018

Total Project Budget (€) 210 145

ERDF 166 205

Lead Partner NGO Chamber of Estonian Societies in Europe, Estonia (Tallinn)

Project Partners Estonian Center of Southwest Finland, Finland (Turku), The Association of Estonia-Societies in Finland, Finland (Helsinki)



ACUCARE

Acute Team in Youth Psychiatric Services Targeted to the Residential Child Care

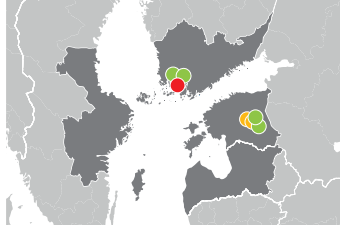
Many children living in vulnerable living environments in families and/or in residential child care settings are often in need of psychiatric treatment as well as child protection services. The demand for a closer collaboration between child protection services and mental health services is high, but the frameworks available at the moment are not sufficient to guarantee suitable outcomes for vulnerable children.

The problem is that professionals act in separate sectors and thus effective inter-professional networking is difficult to establish. Moreover, each care profession has a different working culture, values and behaviors. A promising method to help children and adolescents is the acute team work model. The approach is fairly new in youth psychiatric services in Finland and not existing in Estonia.

ACUCARE's objective is to develop vocational e-course trainings for nursing-, social work and social educator students to create more aligned joint VET programs among partner countries.

The e-course is meant for inter-professional psychiatric acute team work and is divided into two parts: family work in open care (5 ECTS) and residential child care in foster care (5 ECTS).

The project aims at developing new professional skills and innovative ways of working. The e-course increases collaboration between students and practitioners working on different systems and in different countries.



Specific Objective 4.2. More aligned vocational education and training (VET) programmes in the Central Baltic region

Subprogramme Central Baltic
Call Call 2 Small projects

Duration 3/2016 - 2/2018

Total Project Budget (€) 187 901

ERDF 148 139

Lead Partner Turku University of Applied Sciences Ltd. Finland (Turku)

Project Partners University of Tartu, Estonia (Tartu), Tartu Health Care College, Estonia (Tartu)

Associated Partners Merikratos Oy, Finland (Turku), City of Tartu Department of Social Welfare, Estonia (Tartu), Tartu University Clinics, Psychiatry Clinic, Child and adolescent mental health center, Estonia (Tartu), Hospital District of Southwest Finland (Division of Psychiatry), Finland (Turku)



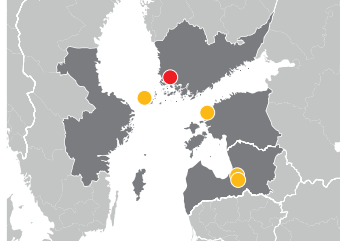
OnBoard-Med

OnBoard-Med, Harmonization of on Board Medical Treatment, Occupational Safety and Emergency Skills in Baltic Sea Shipping

The shipping industry has become multinational, therefore recognising problems in education cannot easily be solved on a national level. A cross-border approach is needed to tackle the issue. The overall objective of the project is to harmonize and develop courses in maritime emergency management, medical treatment and occupational safety.

The courses are targeted at maritime (seaman, deck officer, maritime engineer) and nursing (registered nurse, emergency care nurse and public health nurse) education institutions. Throughout the project life span, the courses will be built, piloted, tested and regularly improved in collaboration with the target groups. Innovative learning methods, eLearning and simulation, will be utilized in building the courses.

The expected improvements in education and maritime safety are significant, and will hopefully become the standard in the field. Participants will get excellent professional skills, and when applicable will also be able to receive international certification from the courses. Further, the results help local employees to enter the European and international labor market.



Specific Objective 4.2. More aligned vocational education and training (VET) programmes in the Central Baltic region

Subprogramme Central Baltic

Call Call 2 Regular projects

Duration 9/2016 - 6/2019

Total Project Budget (€) 998 600

ERDF 781 543

Project WWW

www.facebook.com/onboardmed

Lead Partner Turku University of Applied Sciences, Finland (Turku)

LP Contact www.tuas.fi/en

Project Partners Åland University of Applied Sciences, Åland (Mariehamn), Estonian Nautical School, Estonia (Tallinn), Rīga Stradiņš University, Latvia (Riga), Latvian Maritime Academy, Latvia (Riga);

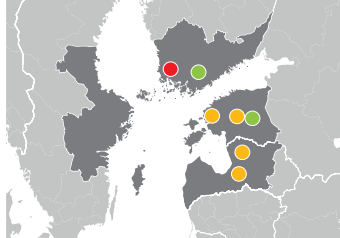
BOOSTED

Boosting tourism business growth through higher vocational education

The project aligns higher vocational tourism education with the needs of the tourism industry and labour market in Finland, Estonia and Latvia into a new, joint curriculum and study. Through the project, relevant skillsets are identified, aligned and translated into a VET curriculum.

The curriculum will be implemented as an online study programme. The programme will be created in close co-operation with the tourist industry and based on real-life business cases. The project will also produce teaching material and will organise an innovation camp to exchange experiences.

After the end of the project the curriculum and the study programme will be integrated as a module in institutes offering online bachelor's degrees. The curriculum will be used by higher vocational institutes delivering tourism education in Finland, Estonia and Latvia. To ensure this result, a teacher's guide will be produced and teachers will receive training. By matching the education with the skills needed in the industry the project aims at boosting the growth of tourism businesses and contributes to create new partnerships.



Specific Objective 4.2. More aligned vocational education and training (VET) programmes in the Central Baltic region

Subprogramme Central Baltic

Call Call 2 Regular projects

Duration 11/2016 - 10/2019

Total Project Budget (€) 571 082

ERDF 460 684

Lead Partner Satakunta University of Applied Sciences, Finland (Pori)

LP Contact www.samk.fi

Project Partners Tallinn University of Technology, Estonia (Kuressaare), Vidzeme University of Applied Sciences, Latvia (Valmiera), University of Latvia, Latvia (Riga),

Associated Partners University of Tartu, Pärnu College, Estonia (Tartu), Saimaa University of Applied Sciences, Finland (Lappeenranta)



NURED

Nurse Education Development

The aim of the project is to develop 2 curricula (CC) in the field of Home Care Nursing/Nurse (HCN/RN) within the Central Baltic region. This is done in the following these steps: 1) surveying and designing new curricula, 2) train teachers for the new curricula, 3) evaluate and publish results. Because the challenges faced by Central Baltic countries are similar, the CCs will be developed together.

We shall improve existing CCs to better prepare HCN/nurse students in: HCN elderly care, care of people with intellectual disability and HCN teamwork. All project activities aim at increasing satisfaction with nursing education and work, highlighting the value of self-directed learning, lifelong learning, and the professional level of HCNs, to facilitate recruitment.

The expected results for HCN/nurse students will be: a) improved teamwork between HCN and RN, incorporation of ICT solutions and skills, e-learning/ distance learning in the CCs, and inclusion of stress and time management, psychosocial work as well ergonomics in the curricula. The evaluation of the new CC will be reviewed.



Specific Objective 4.2. More aligned vocational education and training (VET) programmes in the Central Baltic region

Subprogramme Central Baltic
Call Call 2 Regular projects

Duration 9/2016 - 8/2019

Total Project Budget (€) 862 094

ERDF 675 580

Project WWW

inside.arcada.fi/author/nured/

Lead Partner Arcada-University of Applied Sciences, Finland (Helsinki)

LP Contact www.arcada.fi

Project Partners Riga Stradins University, Latvia (Riga), Tallinn Health Care College, Estonia (Tallinn), Mälardalen University, Sweden (Västerås)



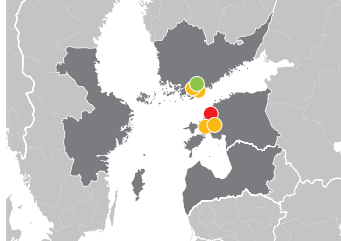
HPP

Aligning professional future-oriented training on health promotion to boost development and economic growth in Läänemaa and Helsinki-Uusimaa regions

Skills play a key role in the market economy; by investing in education and skills needed in the years to come, policymakers, enterprises, schools and individuals can help to support the future economic development.

In order to individuate which skills and educational backgrounds are going to be needed in the future, it is necessary to conduct research about trends and changes in the labour market, devise strategies and plan actions which can support the future direction towards which the economy is directed. The challenge educational institutions face in this context, is foreseeing economic trends in order to shape new curricula for the professions needed in the future. By failing to anticipate and/or react to those trends, schools are unable to shape the careers of tomorrow.

For these reasons, this project aims at conducting a survey in Finland and Estonia about training needs and future skill demands in the health promotion sector, analyse the results and develop a holistic training strategy for vocational education and training (VET) and applied higher education (AHE) providers in Finland and Estonia, designing at least 10 new aligned AHE study programmes and 6 new aligned VET study programmes. All new programmes will be tested and implemented, evaluated and improved. The main findings of the survey and the new study programmes developed under this project will be made available to the public through two international conferences held in Helsinki and Haapsalu, as well as on the project website hpp.tlu.ee.



Specific Objective 4.2. More aligned vocational education and training (VET) programmes in the Central Baltic region

Subprogramme Southern Finland - Estonia

Call Call 2 Regular projects

Duration 7/2016 - 12/2019

Total Project Budget (€) 680 839

ERDF 549 666

Lead Partner Tallinn University, Estonia (Tallinn)

LP Contact www.hk.tlu.ee

Project Partners Helsinki Metropolia University of Applied Sciences, Finland (Helsinki), Haapsalu Vocational Education and Training Center, Estonia (Uuemõisa)

Associated Partners HUS - The Hospital District of Helsinki and Uusimaa, Finland (Helsinki), Foundation West County Hospital, Estonia (Haapsalu), Tehy - The Union of Health and Social Care Professionals in Finland, Finland (Helsinki)



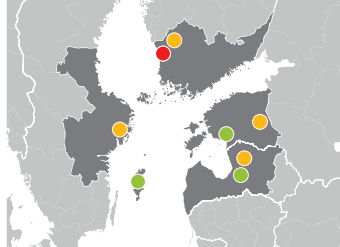
NatureBizz

Business and Wellness from Green Economy Growth

Because of an increasing demand for natural, healthy and ecological products, entrepreneurs are getting closer to the green movement. This green and circular growth offers new business opportunities, to micro entrepreneurs. Yet, there is a true mismatch between demand and supply. We have an abundance of natural resources in the Central Baltic area, but we do not know, yet, how to turn them into green businesses.

The aim of the project is to support the growth and competitiveness of green entrepreneurship by aligning and improving relevant skills. The project is targeted mainly to micro entrepreneurs that exploit local natural resources in their business activities when producing sustainable, small-scale products and services that contribute to human wellbeing. The project provides the means to modernise professional training and redirect skills helping to adapt to changing business environment.

As a result, an aligned, cross-sectoral and professional training programme about green entrepreneurship and business development will be designed and piloted. The emphasis of the project is on how to develop local natural resources into sustainable business activities. At first, needed skills are identified and aligned through research activities, they are translated into a new training programme whose courses, and study material are all included in an open access online platform. The programme is also piloted online and combined with different experience exchanging events and various communication activities (webinars, information and coaching days, publications)



Specific Objective 4.2. More aligned vocational education and training (VET) programmes in the Central Baltic region
Subprogramme Central Baltic
Call Call 3 Regular projects

Duration 03/2018 - 10/2020
Total Project Budget (€) 399 933
ERDF 311 250

Lead Partner Satakunnan ammattikorkeakoulu, Finland
LP Contact www.samk.fi/

Project Partners Vidzeme University of Applied Sciences, Latvia (Valmiera), University of Tartu, Estonia, Pärnu College (Tartu), Södertörn University, Sweden (Huddinge),

Associated Partners Northern Satakunta Development Centre Ltd, Finland (Kankaanpää), ProAgria Western Finland, Finland (Pori), The Nature Conservation Agency, Latvia (Sigulda), Pärnu Bay Partnership Committee, Estonia (Pärnumaa), Gotland Regional Culinary Heritage, Sweden (Romakloster)

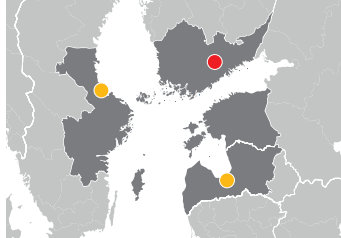
Crea-RE

Creating aligned studies in Resource Efficiency

Aligns and produces contents on resource-efficiency to be used in environmental vocational education and training programmes (VET) in a partnership consisting of: Lahti University of Applied Sciences (FI), the University of Gävle (SWE) and the University of Latvia (LV).

The project aims at aligning and producing learning content to be used in higher environmental VET studies; 2) Producing a channel to share aligned materials; 3) Implementing joint innovative cooperation between companies and higher VET to ensure better matching work opportunities of sustainable business. The activities enable the creation of the holistic view of students and companies in the theme of resource efficiency and circular economy. Working with resource efficiency requires international cooperation due to needed holistic perspective. The joint learning materials developed in the project bring required perspective and improve VET in CB area. All partners bring their own expertise to the activities.

The main project result will be the creation of an aligned curricula content, on “Resource efficiency and circular economy” and it will be implemented in 3 higher VET institutions in the CB region. The result is achieved through the creation of 10 ETCS of aligned curricula content, an E-learning web portal to share the aligned curricula content and 12 practical case studies for companies in international student groups.



Specific Objective 4.2. More aligned vocational education and training (VET) programmes in the Central Baltic region

Subprogramme Central Baltic
Call Call 3 Regular projects

Duration 03/2018 - 11/2020
Total Project Budget (€) 414 133
ERDF 319 940

Lead Partner Lahti University of Applied Sciences Ltd., Finland (Lahti)
LP Contact www.lamk.fi

Project Partners University of Gävle, Sweden (Gävle), University of Latvia, Latvia (Riga)

CoMET

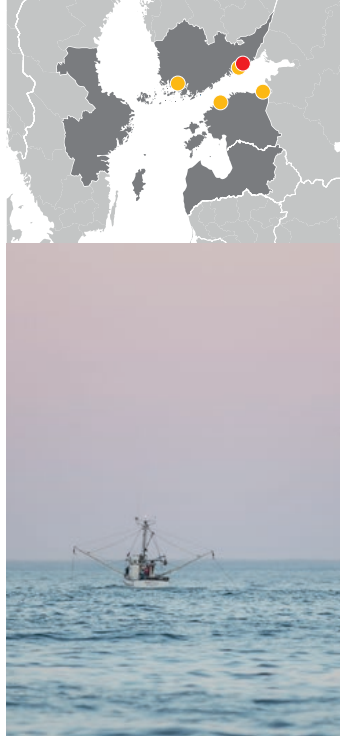
Internationally competitive maritime education for modern seagoing and high quality port services

Seafaring and maritime operations are under constant development; digitalisation, safety and renewed environmental regulations being the most significant factors requiring readiness for change from maritime education providers. The global nature of seafaring also necessitates education to take place in an international context.

This project aims to connect maritime simulator centers across the Baltic Sea. Simulator connectivity enables students to train within the same virtual learning environment where multi-cultural communication and teamworking are an integral part of the training.

Currently crossborder education between maritime education institutes and their simulator centres does not exist. Combining the best expertise into the project partnership, technical expertise in simulators of EMERA, specialization in simulator training structures of EKAMI, proven expertise of Xamk and Aboa Mare in simulation pedagogy and port management expertise in IVKHK enables creating joint maritime vocational education which measures up with the requirements set by labour markets.

to the project will conduct a labour market investigation to elaborate on the set objectives. Then takes place the development of simulators to establish a connection between simulation centres. In parallel guidelines for harmonized simulator trainings are created. New training methods, tools, e-learning platforms and best practices for simulation pedagogy are examined. Joint education is designed and demonstrated in course pilots themed in accordance with labor market needs. Joint programmes and the learning materials developed by the project are integrated into existing curricula. As a result, a new simulated transboundary learning environment and deepened collaboration between education institutions are created. They will in turn provide maritime, port and logistics students with modern education improved in quality and safety, extending the employment opportunities of the students.



Specific Objective 4.2. More aligned vocational education and training (VET) programmes in the Central Baltic region

Subprogramme Southern Finland - Estonia

Call Call 3 Regular projects

Duration 03/2018 - 02/2021

Total Project Budget (€) 947 952

ERDF 739 756

Lead Partner Joint Educational Authority of Kotka - Hamina Region, Finland (Kotka)

LP Contact ekami.fi

Project Partners South-Eastern Finland University of Applied Sciences, Finland (Kotka), Tallinn University of Technology, Estonia (Tallinn), Ida-Virumaa Vocational Education Centre, Estonia (Sillamäe), Novia University of Applied Sciences, Finland (Turku)

UniLog

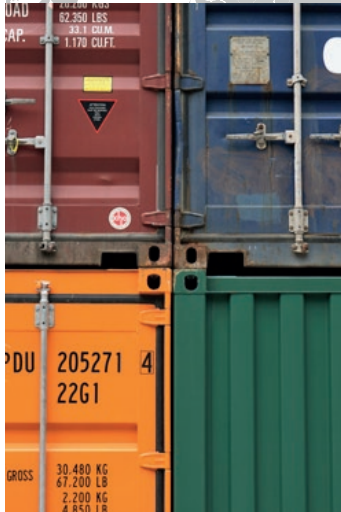
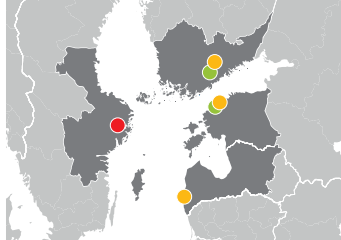
Developing Central Baltic University Level Professional Logistics Education

Various researches have shown that there is a clear lack of skilled logistics employees on all organizational levels in Central Baltic countries. The current project aims at addressing this challenge in cooperation with representatives from Swedish, Finnish, Estonian, and Latvian universities offering courses in logistics s. to better match the current and future needs of the Central Baltic businesses and labor markets.

The project aims at individuating which are the current and future logistic skills needed in the Central Baltic job marked. These needs are consequently compared to the current, university level offering of professional, logistics education within the Central Baltic area to identify which complementary courses would equip students with these skills. Consequently, the participating universities address the emerging development needs by creating a joint study package (18 ECTS BSc and 15 ECTS MSc) and piloting it in cooperation with Central Baltic student groups.

The project results in a better logistics education matching the needs of Central Baltic enterprises as well as inn more employees possessing skills and competences needed in the labor markets. This will also help personnel already employed in logistics company to be more efficient. Morevoer, aligned/joint education and learning, will result in a more integrated and fluid Central Baltic labor market.

The third call, brought to the Central Baltic programme 30 new projects, 23 regular and 7 small. The projects are distributed in all four priorities as follows: 5 in Priority 1, 7 in Priority 2 and 3 and 11 in priority 4 (4 regular and 7 small).



Specific Objective 4.2. More aligned vocational education and training (VET) programmes in the Central Baltic region

Subprogramme Central Baltic
Call Call 3 Regular projects

Duration 04/2018 - 09/2020

Total Project Budget (€) 474 274

ERDF 370 933

Lead Partner Royal institute of technology, Sweden (Stockholm)

LP Contact www.kth.se

Project Partners Lahti University of Applied Sciences Ltd, Finland (Lahti), Riga Technical University, Liepaja Affiliate, Latvia (Liepaja), TTK University of Applied Sciences, Estonia (Tallinn)

Associated Partners Estonian Purchasing and Supply Chain Management Association, Estonia (Tallinn), LIMOWA Logistics Centre Cluster, Finland (Hyyvinkää)



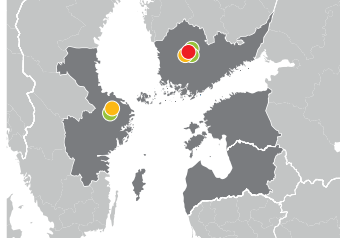
ACTIVE REFUGEES
IN THE COMMUNITY

ARC

Active Refugees in the Community

The ARC project aims at engaging immigrants with refugee background in meaningful activities and interaction with the local community through providing them systematic guidance in practical activities like building and farming, opportunities to cultural interaction and practicing language skills. This helps to prevent the negative effects of polarization and marginalisation.

Finnish and Swedish immigrants participating in the project will share their personal challenges and success stories via regular video blog enabling also the local community to better understand the immigrants and their individual journeys. Interaction between Finnish and Swedish immigrants will provide them peer support and strengthen their sense of dignity and belonging. The project organizes study visits as well as develops joint recommendations on cost efficient methods for improving job creation skills of immigrants and integrating them into the society. The recommendations will be disseminated to local public sector and NGOs working with immigrants by local workshops and a joint seminar.



Specific Objective 4.1. More people benefiting from stronger Central Baltic communities

Subprogramme Central Baltic
Call Call 3 Small projects

Duration 12/2017 - 11/2019

Total Project Budget (€) 271 609

ERDF 203 707

Lead Partner Pirkanmaan
Martat ry, Finland (Tampere)

LP Contact
www.martat.fi/pirkanmaa

Project Partners Pirkanmaan
muotoilu- ja taideteollisuusyhdistys
Modus ry, Finland (Tampere), Institute
of Swedish Safety & Security, Sweden
(Östervåla)

Associated Partners
City of Tampere, Finland,
Sopimusvuorisäätiö sr, Finland
(Tampere), Arbetsförmedlingen Norra
Västmanland Heby, Sweden (Sala)

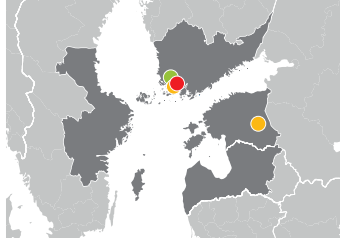


CoMe Strong

Connecting Men and Stronger Local Communities

The CoMe Strong project aims at activating inactive men aged 45-75, especially those who risk social exclusion. By improving their skills and knowledge useful in private life as well as in the labour market, their well-being and social inclusion will increase. All actions will be carried out in local level in order to build stronger local communities.

Initially local kick-off events will be carried out, in which active local men are recruited as volunteers to take responsibility for the CoMe Strong Club actions. The volunteers will be trained to activate passive local men in the clubs in recreational and/or training activities. In addition, they will carry out small projects for the local community like e.g. school fence painting or freezing local ice rink. These small projects will create new networks between men and the local community and promote stronger coherence. The CoMe Strong Clubs from Finland and Estonia will meet during summer for experience sharing and mutual learning. The Clubs will document their activities by filming short video-clips for communication purposes.



Specific Objective 4.1. More people benefiting from stronger Central Baltic communities

Subprogramme Southern
Finland - Estonia

Call Call 3 Small projects

Duration 10/2017 - 09/2019

Total Project Budget (€) 265 241

ERDF 207 317

Lead Partner Turku University of Applied Sciences, Finland (Turku)

LP Contact www.tuas.fi

Project Partners Auralan
Setlementti ry, Finland (Turku), Tartu
Ülikool, Estonia (Tartu)

Associated Partners
Perusturvakuntayhtymä Akseli,
Finland (Mynämäki)

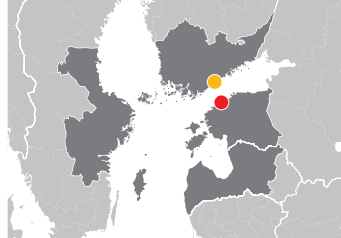
DSB

Social inclusion of people with problematic sexual behaviour

The DSB project deals with Deviant Sexual Behaviour (DSB) which is a problem for roughly 10% of the population, and half of those pose a societal threat which needs to be fought. Modern approach to this challenge is to apply curative-punitive measures and ensure the social inclusion and participation in the labour market of people with DSB as widely as possible. At the same time, the existing services have to be improved.

The main objectives of the project are to improve knowledge, exchange good practices and enhance the capacity of professionals working with persons with DSB to detect, intervene and handle relevant cases professionally. Furthermore, to enhance the possibilities for DSB to receive adequate counselling that will increase their social inclusion and enhance their possibilities to participate in the labour market.

The following activities will be carried out; comparative analysis of DSB counselling needs; development and implementation of training and networking seminars; piloting of counselling for DSBs and their close ones.



Specific Objective 4.1. More people benefiting from stronger Central Baltic communities

Subprogramme Southern Finland - Estonia

Call Call 3 Small projects

Duration 11/2017 - 06/2019

Total Project Budget (€) 119 869

ERDF 94 094

Lead Partner MTÜ Eesti Seksuaaltervise Liit, Estonia (Tallinn)

LP Contact www.estli.ee

Project Partners

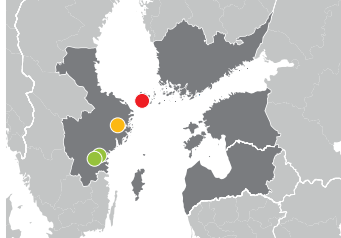
Sexpo-säätiö, Finland (Helsinki)

Gardens

Gardens of Possibilities - inclusion through urban gardening

“Gardens of Possibilities” is an urban gardening project, where rehabilitation, education and job training are combined. The target group is long term unemployed persons at risk of lifelong exclusion, as well as a group of unrecorded, not registered unemployed persons, so called NEETS (Not in Education, Employment, or Training).

The objective is to prevent and break social exclusion by giving the target group new competences and new possibilities on the labour market and in the society in general. The project will result in increased social coherence, social security and equal opportunities. The objective is reached through horticultural therapy, skills development, individual support and practical work. By participating in the project, the participants prepare for employment or education and get a better living situation. An individual mapping clarifies the participant’s current situation, after which a plan with concrete goals is drawn up. In practice, the participants will work with cultivation of flowers and vegetables. The opportunity and challenge is to include people who are (under risk of being) socially marginalized into the society.



Specific Objective 4.1. More people benefiting from stronger Central Baltic communities

Subprogramme Archipelago and Islands

Call Call 3 Small projects

Duration 01/2018 - 12/2019

Total Project Budget (€) 280 000

ERDF 210 000

Lead Partner Emmaus Åland r.f., Finland (Mariehamn)

LP Contact www.emmaus.ax

Project Partners Valdemarsviks kommun, Sweden (Stockholm)

Associated Partners Region Östergötland, Sweden (Linköping), Försäkringskassan, Sweden (Norrköping)

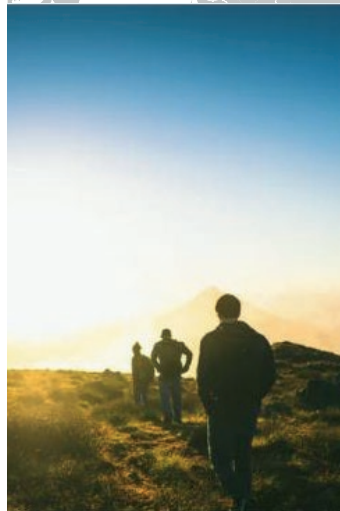
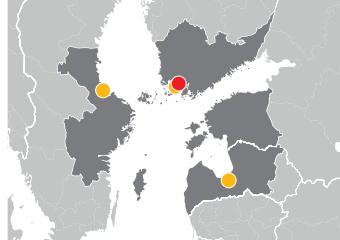


MUCH MORE

Skills for social and working life for the middle-aged men with past addiction problems

The overall objective with the MUCH MORE project is to contribute to improved social inclusion and health for middle-aged men with the past addiction problem, who want to stay away from alcohol. While in general the health of men is worse than women, the middle-aged men after heavy alcohol use experience several vulnerabilities with their social and working life ties broken. The public services are insufficient in providing a complex life guidance for this difficult to reach target group. There is lack of low-threshold, attractive and empowering activities for men, which would focus on manual work or trips to nature and at the same time providing health and life advice.

The project will develop an intervention model, which combines do-it-yourself and nature-based activities with social and working life counselling in peer-groups. Furthermore, the training concept and project experience will be spread among health and social professionals. As a result, men should be better prepared to reunite with society and families.



Specific Objective 4.1. More people benefiting from stronger Central Baltic communities

Subprogramme Central Baltic
Call Call 3 Small projects

Duration 09/2017 - 08/2019

Total Project Budget (€) 271 285

ERDF 207 984

Lead Partner Itämeren alueen Terveystieteiden tutkimuskeskus, Finland (Turku)

LP Contact www.marebalticum.org

Project Partners Sininen nauha ry, Finland (Turku), Rīgas domes Labklājības departaments, Latvia (Riga), Stickan, En krisimottagning för män, Sweden (Gävle)

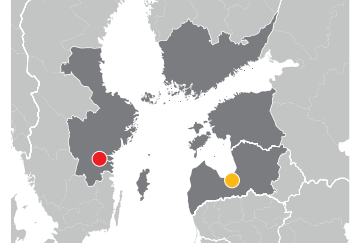


PRIME

Promoting Integration for Young Migrants

The PRIME project address the urgent need of supporting the social, cultural and labour market integration of young recently arrived migrants aged 18-30, and focuses on developing a joint Young Migrants Training Programme. A cross-border approach is needed as young migrants in the partner regions face common barriers to inclusion including limited language skills and knowledge of local culture and economy, low skills/qualifications, high unemployment and a lack of social assets and support.

The cross border approach will bring together the distinct specialisms of the partners, enabling them to develop a more comprehensive response to the target group's needs. The project is highly innovative in its development of a holistic programme customised to individual needs. It will consist of a toolkit of options, including informal education to support engagement, language and cultural awareness training, vocational training, work placements, job brokerage and community based workplace mentoring.



Specific Objective 4.1. More people benefiting from stronger Central Baltic communities

Subprogramme Central Baltic
Call Call 3 Small projects

Duration 09/2017 - 08/2019

Total Project Budget (€) 240 634

ERDF 187 585

Lead Partner

FoU Centrum, Linköpings kommun, Sweden (Linköping)

LP Contact www.linkoping.se

Project Partners

Creative Ideas, Latvia (Riga)

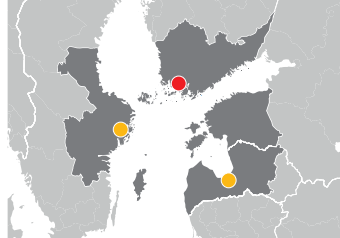


SimE

Simulation pedagogy in learning ethics in practice in health care

The overall objective of the SimE project is to improve nursing students' ethical competence by creating three common study courses in order to develop more aligned VET programmes. The courses will be embedded in each partner organisation's curricula, which will result in increased ethical competence among nursing students in the Central Baltic region. Common courses and teaching methods ensure more harmonized education level in the region, and also more harmonized competence level of nurses working in these countries.

Development of the ethical competence of nursing students is done with help of multi-various methods, like simulation and practical training. Simulation environment is a safe and effective way for students to learn and practice complex ethical skills. The patients and health care providers in the Central Baltic region need more nurses that possess equal and ethically competitive nursing care. This can be achieved by building more aligned curricula in nursing education. Improved ethical skills serve the needs of healthcare providers, promote the mobility of the workforce and increase the quality of patient care.



Specific Objective 4.2. More aligned vocational education and training (VET) programmes in the Central Baltic region

Subprogramme Central Baltic

Call Call 3 Small projects

Duration 10/2017 - 09/2019

Total Project Budget (€) 257 713

ERDF 199 991

Lead Partner Turku University of Applied Sciences, Finland (Turku)

LP Contact www.tuas.fi

Project Partners

Latvijas Universitātes Rīgas Medicīnas koledža, Latvia (Riga), Swedish Stiftelsen Rödakorshemmet/Röda Korsets Högskola, Sweden (Huddinge)

Projects in alphabetical order

30MILES	65	iWater	41
Active Age	94	Lakesperience	56
ACUCARE	98	LEF network to China	32
ADAPT	62	Let us be active!	84
ARC	107	Lights On!	37
Archipelago Partnerships	25	Live Baltic Campus	40
Augmented Urbans	53	LiviHeri	35
BALTACAR	52	MASAPO	67
Baltic Urban Lab	39	MobiCarnet	64
Baltic Wings	55	MUCH MORE	111
BATSECO-BOAT	76	NATTOURS	38
BELT	12	NatureBizz	103
BLASTIC	44	NNFA	28
BOOSTED	100	NURED	101
CAITO	24	NUTRINFLOW	47
CB2East	14	NutriTrade	45
CB 4 GameCamps	26	OnBoard-Med	99
CBEwB	15	PAD	82
CB HealthAccess	13	PIM	83
CLUSME	16	Plan4Blue	50
Coast4us	54	PortMate	72
CoMe Strong	108	PRIME	112
CoMET	105	REFEC	78
Crea-RE	104	REGL	85
CROSS	96	RIBS	18
DeDiWe	88	SAFHY	91
DefenceArch	49	SEABASED	58
DigiYouth	29	SEASTOP	77
DSB	109	SimE	113
EDU-RAIL	92	SIPPE	86
EDU-SMEs	90	SMART E67	63
EfficientFlow	73	SmartLog	69
EmpowerKids	93	Smart Marina	74
E-TICKETING	79	SmartPorts	66
FamilyPorts	68	SmartZoos	34
FEM (Female Estonian Migrant)	97	SME2GO	19
FINEEX Music	27	SME Aisle	30
FinEst Link	70	SPARKS	23
FinEstSmartMobility	71	Springboard	20
Gardens	110	STARPABS	21
GreenAgri	46	St Olav Waterway	51
HANSA	36	Sustainable Gateways	75
HEAT	57	SustainBaltic	48
HEAWATER	59	TALSINKI	22
HPP	102	TheatreEx	87
ICT Meta Cluster	17	UniLog	106
IHMEC	31	WATERCHAIN	43
INSURE	42	YOUTH-SPORT-VOL	95
ITSVET	89		

Projects by call

Call 1 Small projects

EDU-SMEs.....	90
Let us be active!.....	84
PAD	82
PIM	83
REGI	85
SIPPE	86
TheatreEx.....	87

Call 2 Small projects

Active Age.....	94
ACUCARE	98
CROSS	96
EmpowerKids.....	93
FEM (Female Estonian Migrant) 97	
SPARKS	23
YOUTH-SPORT-VOL	95

Call 3 Small projects

ARC	107
CoMe Strong.....	108
DSB.....	109
Gardens.....	110
MUCH MORE.....	111
PRIME	112
SimE	113

Call 1 Regular projects

30MILES	65
ADAPT.....	62
Baltic Urban Lab.....	39
BELT	12
BLASTIC	44
CB2East.....	14
CBewB.....	15
CB HealthAccess.....	13
CLUSME	16
DeDiWe	88
EDU-RAIL	92
GreenAgri.....	46
HANSA.....	36
ICT Meta Cluster.....	17
INSURE	42
ITSVET	89
iWater	41
Lights On!	37
Live Baltic Campus	40
LiviHeri	35
MASAPO	67
MobiCarnet.....	64
NATTOURS.....	38
NUTRINFLOW	47
NutriTrade	45
RIBS	18
SAFHY	91
SMART E67.....	63
SmartPorts	66
SmartZoos.....	34
SME2GO	19
Springboard	20
STARPABS	21
TALSINKI	22
WATERCHAIN	43

Call 2 Regular projects

Archipelago Partnerships.....	25
BALTACAR	52
BOOSTED.....	100
CAITO	24
CB 4 GameCamps	26
DefenceArch	49
FamilyPorts	68
FINEEX Music.....	27
FinEst Link	70
FinEstSmartMobility	71
HPP	102
NURED.....	101
OnBoard-Med	99
Plan4Blue	50
PortMate	72
SmartLog.....	69
St Olav Waterway	51
SustainBaltic.....	48

Call 3 Regular projects

Augmented Urbans.....	53
Baltic Wings.....	55
BATSECO-BOAT.....	76
Coast4us	54
CoMET	105
Crea-RE	104
DigiYouth	29
EfficientFlow	73
E-TICKETING	79
HEAT	57
HEAWATER	59
IHMEC.....	31
Lakesperience.....	56
LEF network to China	32
NatureBizz	103
REFEC	78
SEABASED	58
SEASTOP	77
Smart Marina	74
SME Aisle	30
Sustainable Gateways	75
UniLog.....	106

Projects by end date

EDU-SMEs.....	2017-02-28.....	90	FINEEX Music.....	2019-07-31.....	27
Let us be active!.....	2017-02-28.....	84	PRIME.....	2019-08-30.....	112
PAD.....	2017-04-30.....	82	ADAPT.....	2019-08-31.....	62
PIM.....	2017-08-31.....	83	FinEstSmartMobility.....	2019-08-31.....	71
REGI.....	2017-08-31.....	85	GreenAgri.....	2019-08-31.....	46
SIPPE.....	2017-08-31.....	86	INSURE.....	2019-08-31.....	42
TheatreEx.....	2017-08-31.....	87	MUCH MORE.....	2019-08-31.....	111
SmartPorts.....	2017-09-30.....	66	NURED.....	2019-08-31.....	101
MobiCarnet.....	2017-11-30.....	64	SmartLog.....	2019-08-31.....	69
SAFHY.....	2017-12-31.....	91	STARPABS.....	2019-08-31.....	21
Springboard.....	2018-01-31.....	20	Archipelago Partnerships.....	2019-09-30.....	25
YOUTH-SPORT-VOL.....	2018-01-31.....	95	CoMe Strong.....	2019-09-30.....	108
Active Age.....	2018-02-28.....	94	SimE.....	2019-09-30.....	113
ACUCARE.....	2018-02-28.....	98	BOOSTED.....	2019-10-31.....	100
DeDiWe.....	2018-02-28.....	88	SMART E67.....	2019-10-31.....	63
SPARKS.....	2018-02-28.....	23	ARC.....	2019-11-30.....	107
EmpowerKids.....	2018-03-31.....	93	St Olav Waterway.....	2019-11-30.....	51
FEM (Female Estonian Migrant).....	2018-03-31.....	97	BALTACAR.....	2019-12-31.....	52
Live Baltic Campus.....	2018-03-31.....	40	Gardens.....	2019-12-31.....	110
MASAPO.....	2018-03-31.....	67	HPP.....	2019-12-31.....	102
CROSS.....	2018-05-31.....	96	Plan4Blue.....	2019-12-31.....	50
FinEst Link.....	2018-07-31.....	70	PortMate.....	2019-12-31.....	72
iWater.....	2018-08-31.....	41	CB 4 GameCamps.....	2020-01-31.....	26
SmartZoos.....	2018-08-31.....	34	CAITO.....	2020-03-31.....	24
BELT.....	2018-09-30.....	12	FamilyPorts.....	2020-03-31.....	68
CB2East.....	2018-09-30.....	14	Sustainable Gateways.....	2020-04-30.....	75
EDU-RAIL.....	2018-09-30.....	92	REFEC.....	2020-05-31.....	78
SME2GO.....	2018-09-30.....	19	UniLog.....	2020-09-30.....	106
TALSINKI.....	2018-09-30.....	22	NatureBizz.....	2020-10-31.....	103
WATERCHAIN.....	2018-09-30.....	43	Crea-RE.....	2020-11-30.....	104
NATTOURS.....	2018-10-31.....	38	SEASTOP.....	2020-11-30.....	77
30MILES.....	2018-11-30.....	65	Baltic Wings.....	2020-12-31.....	55
LiviHeri.....	2018-11-30.....	35	Coast4us.....	2020-12-31.....	54
RIBS.....	2018-11-30.....	18	Lakesperience.....	2020-12-31.....	56
Baltic Urban Lab.....	2018-12-31.....	39	Smart Marina.....	2021-01-31.....	74
BLASTIC.....	2018-12-31.....	44	Augmented Urbans.....	2021-02-28.....	53
CB HealthAccess.....	2018-12-31.....	13	BATSECO-BOAT.....	2021-02-28.....	76
CLUSME.....	2018-12-31.....	16	CoMET.....	2021-02-28.....	105
HANSA.....	2018-12-31.....	36	EfficientFlow.....	2021-02-28.....	73
DefenceArch.....	2019-02-28.....	49	HEAWATER.....	2021-02-28.....	59
ICT Meta Cluster.....	2019-02-28.....	17	IHMEC.....	2021-02-28.....	31
LightsOn!.....	2019-02-28.....	37	NNFA.....	2021-02-28.....	28
NUTRINFLOW.....	2019-02-28.....	47	SEABASED.....	2021-02-28.....	58
NutriTrade.....	2019-02-28.....	45	HEAT.....	2021-03-31.....	57
SustainBaltic.....	2019-02-28.....	48	LEF network to China.....	2021-03-31.....	32
ITSVET.....	2019-03-31.....	89	DigiYouth.....	2021-04-30.....	29
CBewB.....	2019-04-30.....	15	E-TICKETING.....	2021-04-30.....	79
DSB.....	2019-06-30.....	109	SME Aisle.....	2021-08-31.....	30
OnBoard-Med.....	2019-06-30.....	99			

Projects by lead partner country

Active Age	EE.....	94	Gardens.....	FI.....	110
BALTACAR	EE.....	52	HEAT	FI.....	57
CAITO	EE.....	24	IHMEC	FI.....	31
CB HealthAccess.....	EE.....	13	Lakesperience.....	FI.....	56
CBEwB.....	EE.....	15	Let us be active!.....	FI.....	84
CLUSME.....	EE.....	16	LightsOn!	FI.....	37
CROSS	EE.....	96	Live Baltic Campus	FI.....	40
DigiYouth	EE.....	29	LiviHeri	FI.....	35
DSB	EE.....	109	MUCH MORE.....	FI.....	111
EDU-RAIL	EE.....	92	NatureBizz	FI.....	103
E-TICKETING	EE.....	79	NURED	FI.....	101
FEM (Female Estonian Migrant)	EE.....	97	NUTRINFLOW.....	FI.....	47
GreenAgri	EE.....	46	NutriTrade	FI.....	45
HEAWATER	EE.....	59	OnBoard-Med	FI.....	99
HPP	EE.....	102	PAD	FI.....	82
ITSVET	EE.....	89	Plan4Blue	FI.....	50
MASAPO	EE.....	67	PortMate	FI.....	72
MobiCarnet.....	EE.....	64	REFEC	FI.....	78
NATTOURS.....	EE.....	38	REGI	FI.....	85
NNFA.....	EE.....	28	RIBS	FI.....	18
PIM.....	EE.....	83	SAFHY.....	FI.....	91
SmartPorts	EE.....	66	SEABASED	FI.....	58
SmartZoos.....	EE.....	34	SimE	FI.....	113
SPARKS	EE.....	23	SIPPE	FI.....	86
TALSINKI	EE.....	22	Smart Marina	FI.....	74
TheatreEx.....	EE.....	87	SmartLog	FI.....	69
YOUTH-SPORT-VOL	EE.....	95	SME Aisle	FI.....	30
30MILES	FI.....	65	Springboard	FI.....	20
ACUCARE	FI.....	98	St Olav Waterway	FI.....	51
ARC	FI.....	107	STARPABS.....	FI.....	21
Archipelago Partnerships.....	FI.....	25	Sustainable Gateways	FI.....	75
Augmented Urbans.....	FI.....	53	SustainBaltic	FI.....	48
Baltic Urban Lab.....	FI.....	39	WATERCHAIN	FI.....	43
BATSECO-BOAT.....	FI.....	76	iWater	LV.....	41
BELT	FI.....	12	LEF network to China	LV.....	32
BOOSTED	FI.....	100	SMART E67.....	LV.....	63
CB 4 GameCamps	FI.....	26	ADAPT.....	SE.....	62
CB2East.....	FI.....	14	Baltic Wings.....	SE.....	55
CoMe Strong.....	FI.....	108	BLASTIC	SE.....	44
CoMET	FI.....	105	Coast4us	SE.....	54
Crea-RE	FI.....	104	EfficientFlow	SE.....	73
DeDiWe	FI.....	88	HANSA	SE.....	36
DefenceArch.....	FI.....	49	ICT Meta Cluster.....	SE.....	17
EDU-SMEs	FI.....	90	INSURE	SE.....	42
EmpowerKids.....	FI.....	93	PRIME	SE.....	112
FamilyPorts	FI.....	68	SEASTOP.....	SE.....	77
FINEEX Music.....	FI.....	27	SME2GO	SE.....	19
FinEst Link	FI.....	70	UniLog.....	SE.....	106
FinEstSmartMobility	FI.....	71			

Contact information

Joint Secretariat

Main Office

Regional Council of Southwest Finland
P.O. Box 273, 20101 Turku, Finland
Visiting address: Ratapihankatu 36 (2nd floor),
Turku, Finland
Phone: +358 40 550 8408
info@centralbaltic.eu

National Contact Points

Sweden North

Christina Rehnberg, Information officer
Visiting address: Regeringsgatan 66, 111 39
Stockholm, SWEDEN
Postal address: c/o County Administrative
Board of Stockholm, Box 22067, 104 22
Stockholm, SWEDEN
christina.rehnberg@lansstyrelsen.se
Phone: +46 10 22 31 455

Sweden South

Annika Holmström, Information Officer
c/o Region Östergötland, St Larsgatan 49B,
581 91 Linköping, SWEDEN
annika.holmstrom@regionostergotland.se
Phone: +46 10 103 69 59

Latvia

Ilze Legzdina, Information officer
Visiting address: Doma laukums 8a, 3rd floor,
Riga, LV-1010, Latvia
Mailing address: Peldu iela 25,
Riga, LV-1494, Latvia
ilze.legzdina@varam.gov.lv
Phone: +371 67026588

Managing Authority

Merike Niitepõld
Regional Council of Southwest Finland
P.O. Box 273, 20101 Turku, Finland
merike.niitepold@centralbaltic.eu
Phone: +358 40 742 0302

Estonia

Johanna Joosep, Information officer
johanna.joosep@rtk.ee
Toetuste keskus, Ettevõtluse Arendamise
Sihtasutus, Tartu (Sõbra 56) 51013, EAS
Enterprise Estonia
Phone: +372 663 1869
Mobile: +372 564 89643

Finland

Jaakko Ranta, Information Officer
c/o Helsinki-Uusimaa Regional Council,
Esterinportti 2 B, 00240 Helsinki, FINLAND
jaakko.ranta@uudenmaanliitto.fi
Phone: +358 40 5750962

Åland

Ester Miros, Information Officer
Postal address: c/o Government of Åland,
Mailing address: P.O. Box 2010, 22111
Mariehamn, ÅLAND
Visiting address: Nygatan 6,
AX-22100 Mariehamn, ÅLAND
ester.miros@regeringen.ax
Phone: +358 457 3421 294