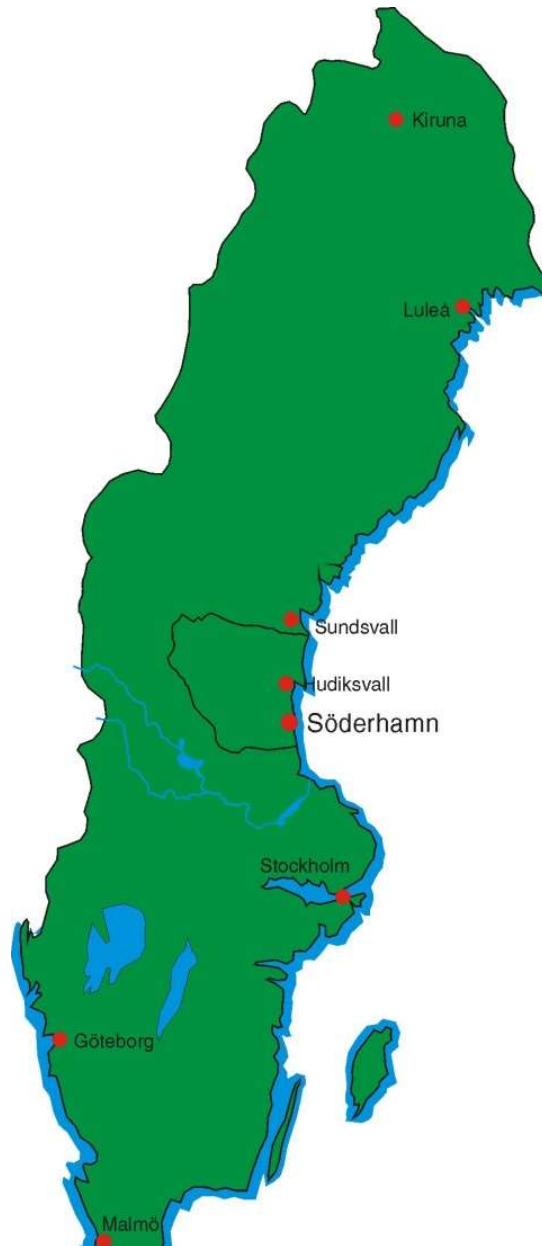




**Söderhamns
kommun**

Partner search event Central Baltic 2021-2027

Maria Svensson, project developer



Municipality of Söderhamn

- Approx. 26 000 inhabitants (14 000 in urban area)
- Two hours to Stockholm
- Land area: 1 062,2 km²
- Small municipality
- Large archipelago
- Challenge with demography and segregation
- Experienced several floodings
- Broad experience in projects

iWater – Central Baltic

- Develop integrated and multifunctional storm water management
- To find and develop common methods for guidelines, tools and solution by cooperation and technical development
- The project partners adopts new integrations storm water programmes/plans (ISWMS)
- The project supports the Municipalitys development of a new energy- and climat strategy

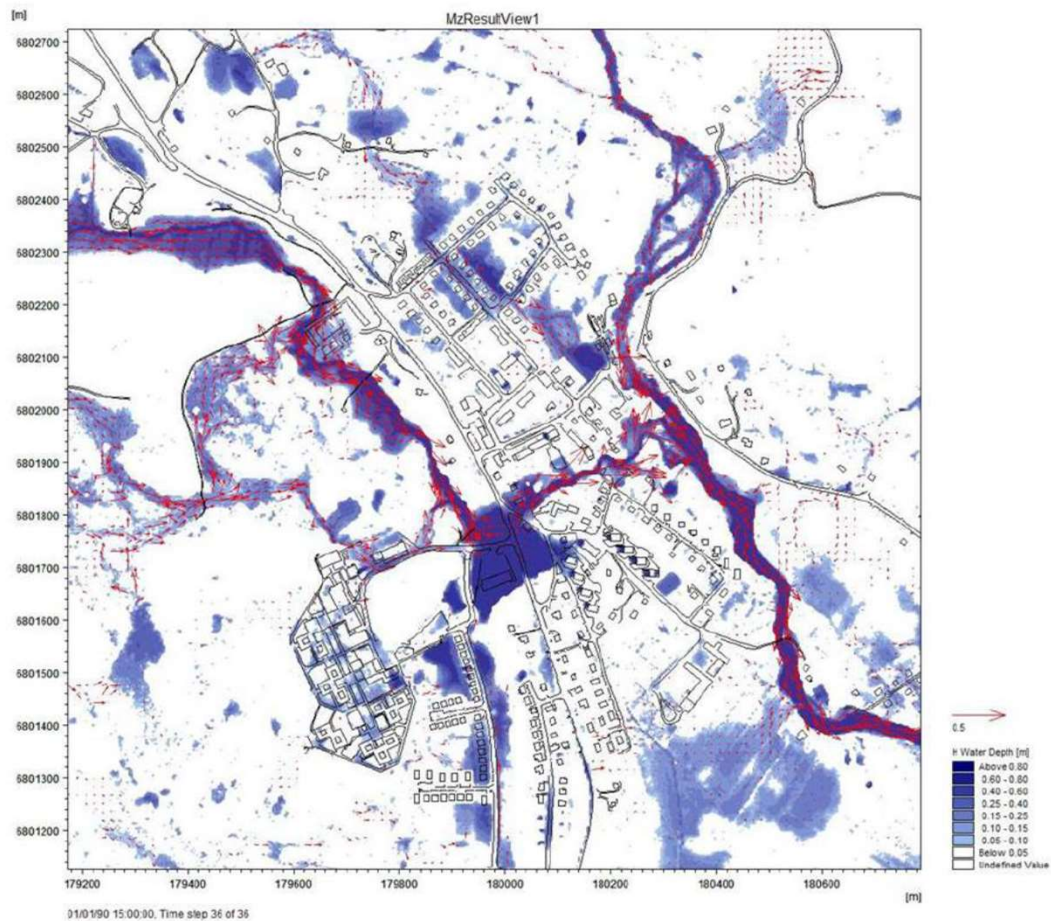
Facts

2015 - 2018

Total budget 2 347 930 EUR

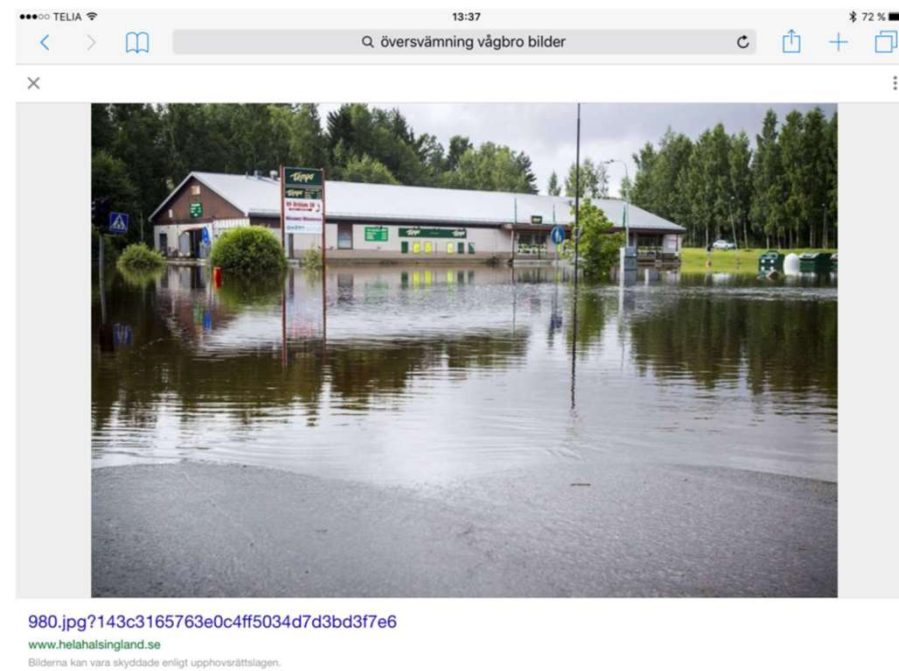
Söderhamns budget 309 950 EUR
ERDF: 232.463 EUR ERDF

Partners: 4 Finland, 2 Sweden, 2 Estonia, 1 Latvia



Figur 6 Beräknade maximala vattendjup och momentana flödes hastigheter som resultat av en översiktlig översvämningsanalys.

iWater



Heawater – Central Baltic

- To improve the water quality in small urban water flows
- To find and develop common methods for guidelines, tools and solution by cooperation and technical development
- To identify the best methods or designs to manage storm water and to compile these into a tool to support civil servants, politicians and others
- Pilot investments on two locations in Söderhamn

Facts

2018 - 2021

Total budget €1 898 349 EUR

Söderhamns budget 509.457 EUR
ERDF: 378.017 EUR ERDF

Partners: 2 Estonia, 2 Finland, 1 Sweden

Heawater – Central Baltic



N N 4G 42% 16:25
Helahälsingland.se

helahälsingland.se

Start Blåljus Nära Sp Logga in

PROVLÄS TILL 17:00

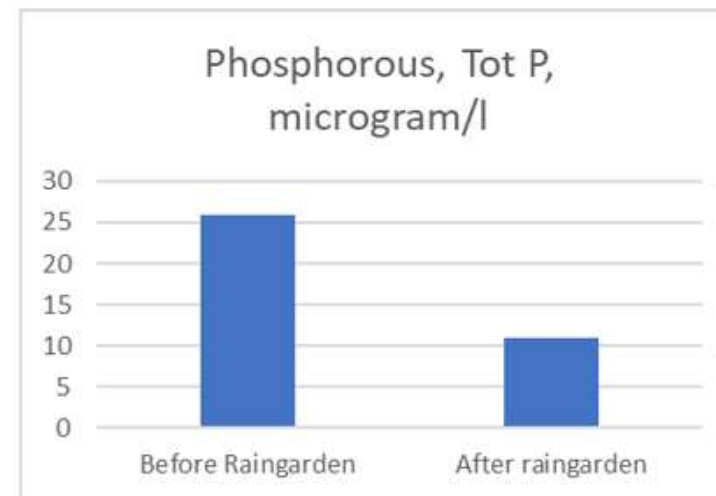
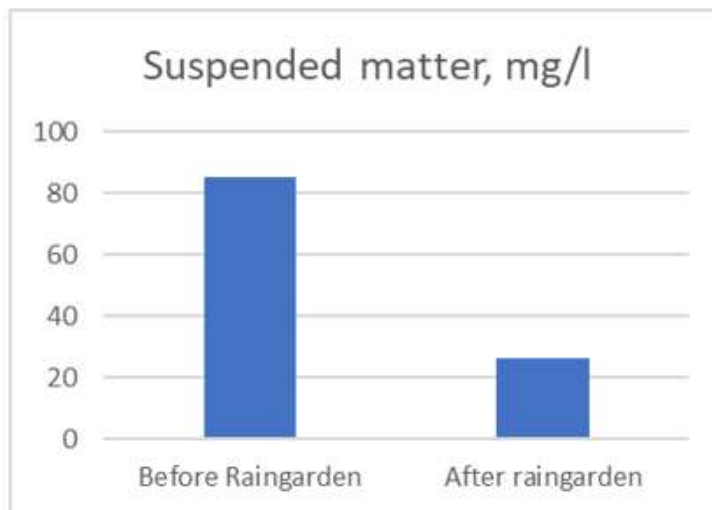
Nu ska Söderhamnsån bli renare – tungmetaller och mikroplaster ska bort

Nu byggs en regnbädd för dagvatten i centrala Söderhamn med förhoppning att förbättra vattenkvaliteten i Söderhamnsån.

- Vattnet ska filtrera genom marken, tänk dig ett kaffefilter, säger Agneta Svensson, kommunens projektledare.

Heawater – Central Baltic

Results



Monitoring shows that the level of suspended matter has gone from 85 to 25 mg/l. The concentration of phosphorus from 0,26 mg/l to 0,11 mg/l and for nitrogen in the form of ammonium <1.0 mg/l to 0,01 mg/l.

Cross-border cooperation

- We try to have a broad network of contacts. For iWater we found the partnership in UBC. For Heawater the partnership had heard about iWater and invited us.
- The common challenge is (usually) easy because of the programme priorities such as improving the water quality of the Baltic Sea.
- The activities are often "individual" depending on the challenges but they all contribute to the entire project because they belong to targets or workpackages.

- Benefits? We can develop Söderhamn and at the same time learn and grow with the help from other countries.

... And it isn't hard or difficult as long as we know what we need to do and motivate and explain it to others. Then it is easier to find solutions. One of the difficulties can be that we all communicate in various ways (use of language and knowledge on terminology).

Results

- Working on iWater we had the need within the municipality to create new policies and strategies for the storm water management. iWater was a bonus as we could do this within the project.
- In Heawater we took another step, using what we learned from iWater and created pilots for storm water and cleaning the storm water.
- We can never predict the result, even when we plan in detail years ahead. Timing and other circumstances has a impact. It is truly an additional bonus when we find that we can build upon our results and what we have learned.
- During the years the staff has become even more experienced and has increased their knowledge. They (the staff) see the added value of working with others and to get perspectives on how to tackle our challenges.

Why

- We develop our Municipality and are learning from other partners experiences and expertise.
- It doesn't have to be hard or difficult. The most valuable lesson is to know what we need to do and then to explain it to others. To be a part of a project this requires a match to not only the programme but to the project. We try not to derive from our needs.



What lasts for us?

We develop our Municipality and our organisation.

We carry out decisions made by the politicians in the Municipality (by for example create strategies or policys within the projects.

We get to try out new ways on how to work with a challenge and we get financial support to do so. This is crucial for us.

We get the possibility to develop our organisation and activities with the citizens in mind and we get financial support to do so.

Our staff get to increase and share their knowledge with "new" colleagues in the project partnership. Our working groups in the organisation becomes more horizontal.

Watch

<https://www.youtube.com/watch?v=2TGHP3kMhLM>



**Söderhamns
kommun**

Maria Svensson, Project Developer
maria.svensson@soderhamn.se