

# Project Sustainable Flow

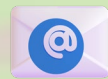
CEO, Deniss Bickovs



Riga, Latvia



[www.itda.co](http://www.itda.co)



[deniss.bickovs@itda.co](mailto:deniss.bickovs@itda.co)



**Interreg**



Co-funded by  
the European Union

Central Baltic Programme

**Sustainable Flow**





# About Us

## International Transport Development Association (ITDA)

- Independent organization based in Latvia
- Operating across EU with public & private partners
- Specialized in maritime safety, port digitalization, sustainable transport & education, logistic etc.





# Our Mission

## Building the Future of Smart Maritime Transport

- 🌱 Sustainability & Green Deal alignment
- 🤝 Cross-sector cooperation (ports, government, business)
- 💻 Digital innovations for port, transport and logistics



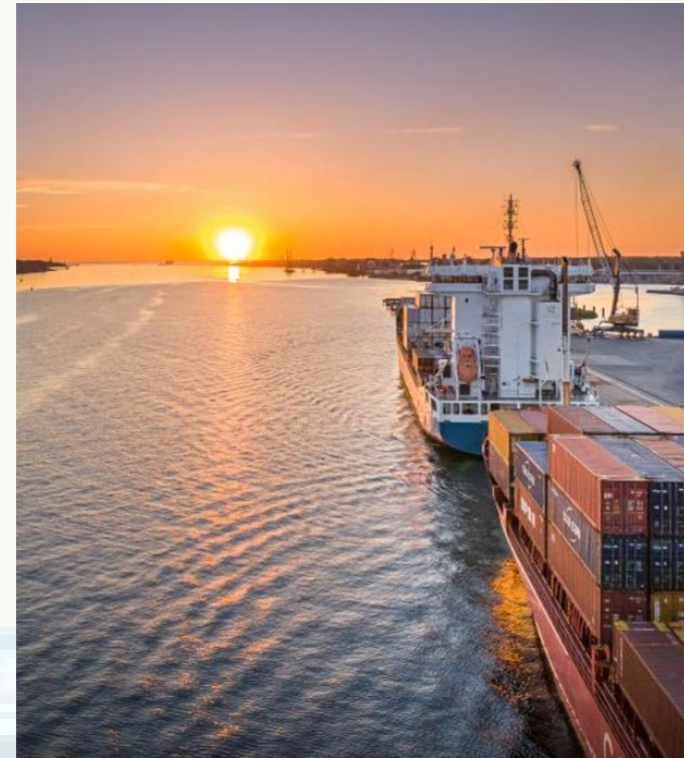




# Core Competencies

## What We Do

- EU project coordination and consultancy
- Custom IT solutions and Digital transformation for ports & intermodal logistics and transport
- Environmental and safety consulting

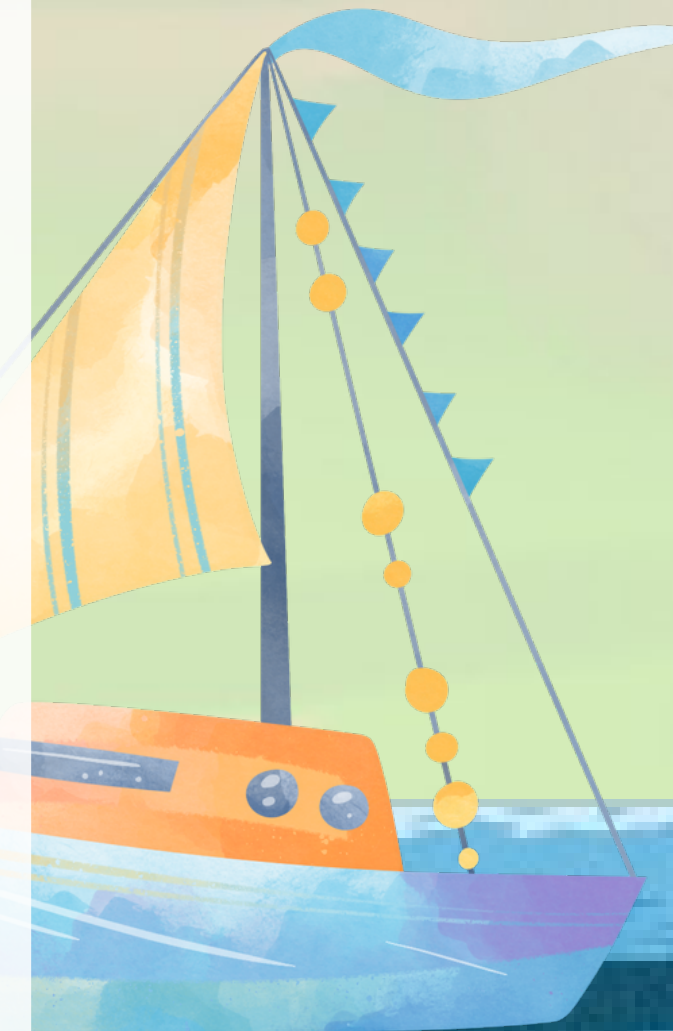






# Riga – Pilot Port

- 1 Riga is one of the pilot ports in the Sustainable Flow project
- 2 The goal is to reduce CO<sub>2</sub> emissions through smarter digital tools and green energy solutions.
- 3 Riga is actively contributing to the development and testing of a NEW Sustainable Digital Tool and install Solar Panel.







# Riga – Strategic Baltic Sea Hub

**LV Largest port in Latvia – handling 49% of all Latvian seaborne cargo**

 **Cargo turnover: 18.79 million tons**

 **Vessels handled: 2,588 ships | Gross tonnage: 25.2 million GT**

 **Jobs supported: over 4,000**

 **Connections: Maritime trade with 50+ countries, direct road, rail, and future Rail Baltica access**

 **Port area: 6,348 ha – includes terminals for containers, dry bulk, liquid bulk, general & RoRo cargo**

 **Green initiatives: Solar panel installations, onshore power projects, LNG/H2-ready infrastructure**

 **Development: Spilve Park (100 MW solar energy project a), new RoPax terminal, and carbon-neutral transition strategy, Involvement in BalticSeaH as well as Plans for shore power, green fuel refueling, and fleet modernization**







# Pilot Activities

**What's happening in Riga as part of Sustainable Flow:**

- ✓ **Participating in the development of the Sustainable Digital Tool**
- ✓ **Providing real data to calculate real-time CO<sub>2</sub> emissions**
- ✓ **Supporting standard-based sustainability reporting**
- ✓ **Stakeholder involvement: workshops, challenge mapping, port site visits**
- ✓ **Testing tool usability and emissions visibility in a real environment**





# A Scalable Digital Solution – Open for Cooperation

## Unlocking Broader Potential for Latvian and Global Infrastructure

- The Sustainable Digital Tool, currently under development and to be piloted in Riga and other partner ports, is being designed with scalability and adaptability in mind.
- It can be easily implemented in other Latvian ports, creating a unified, real-time emissions reporting network across the country.
- The tool's flexible architecture allows for future adaptation in airports and other sectors.

## 🧡 Looking Ahead – Partnership is Key

- ITDA is committed to long-term development and open collaboration.
- We see this project as a foundation for a national-level digital transformation in transport and climate action.
- We are actively seeking cooperation with national authorities, especially the Ministry of Climate and Energy, to take this tool to the next level.

## 📢 Call to Action

"Let's build next-generation emission visibility and smart transport system – together."





# Thank You



**Interreg**



Co-funded by  
the European Union

**Central Baltic Programme**

**Sustainable Flow**

IN COOPERATION WITH



<https://centralbaltic.eu/project/sustainable-flow/>