



EST-Floattech
Intelligent Energy Storage Solutions

A sustainable future with zero-emission shipping

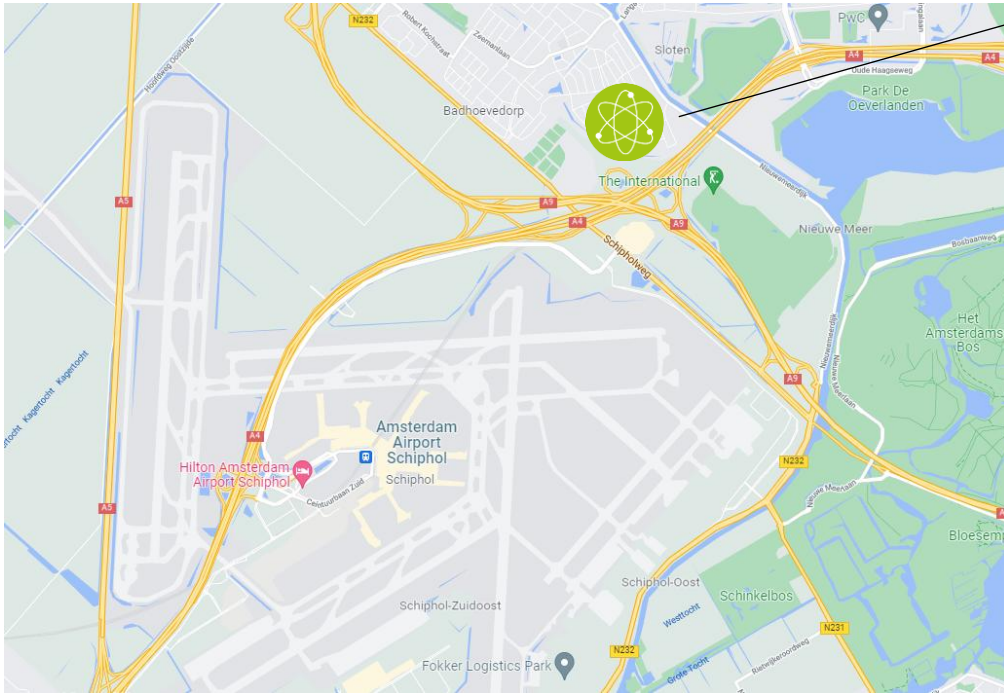


15-04-2026, prepared for: REISFER's 2nd Island Ferry Summit

Organization

History

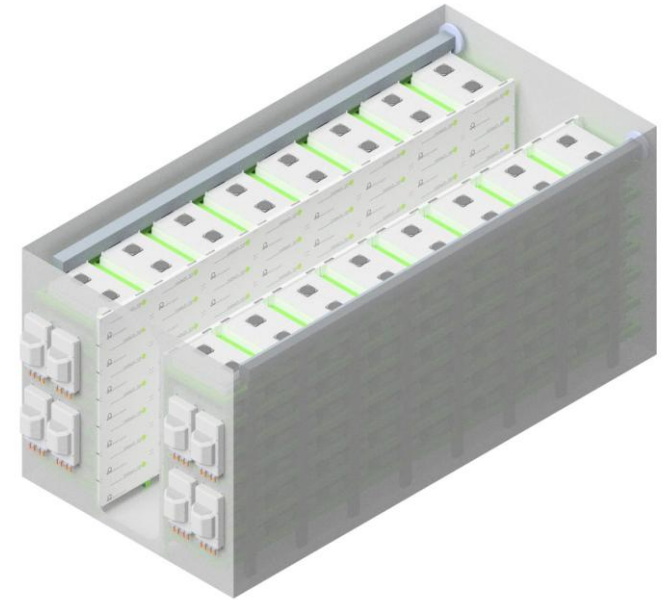
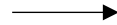
- 2009 : ES Technologies was founded
- 2012 : First delivery of ESS
- 2015 : Entities brought together in EST-Floattech
- 2018 : DNV Type Approval
- 2021 : 200 Projects
- 2024 : 15 years of existence
- Today : 350 Projects



Product

Definitions

Octopus NMC



Cell

Module (10 kWh)
(56 cells)

String
(up to 18 modules)
+ String controller

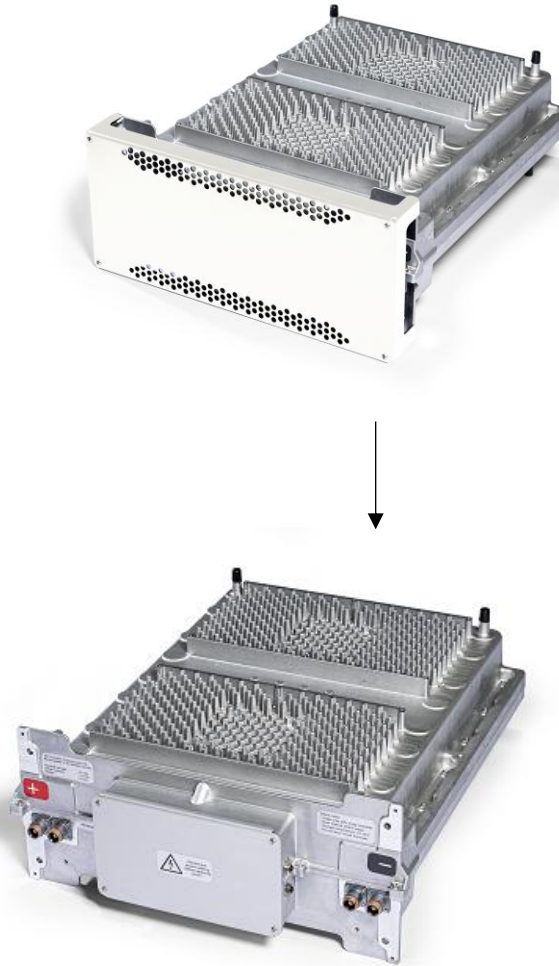
System

Product

Battery Module: “Octopus”

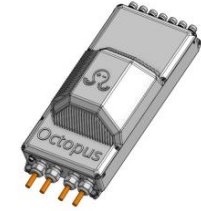
Cell chemistry : Li-Ion NMC
Capacity : 10 kWh / 52 VDC

- High energy density
- Aluminum housing
- IP65 waterproof
- Integrated Battery Management System (BMS)
- 24/7 balancing without downtime



Product

Battery Module: "Octopus"



Example:
12 modules in series

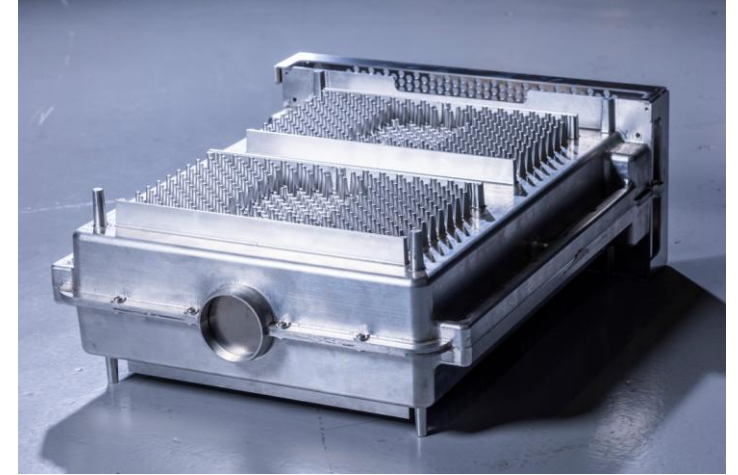
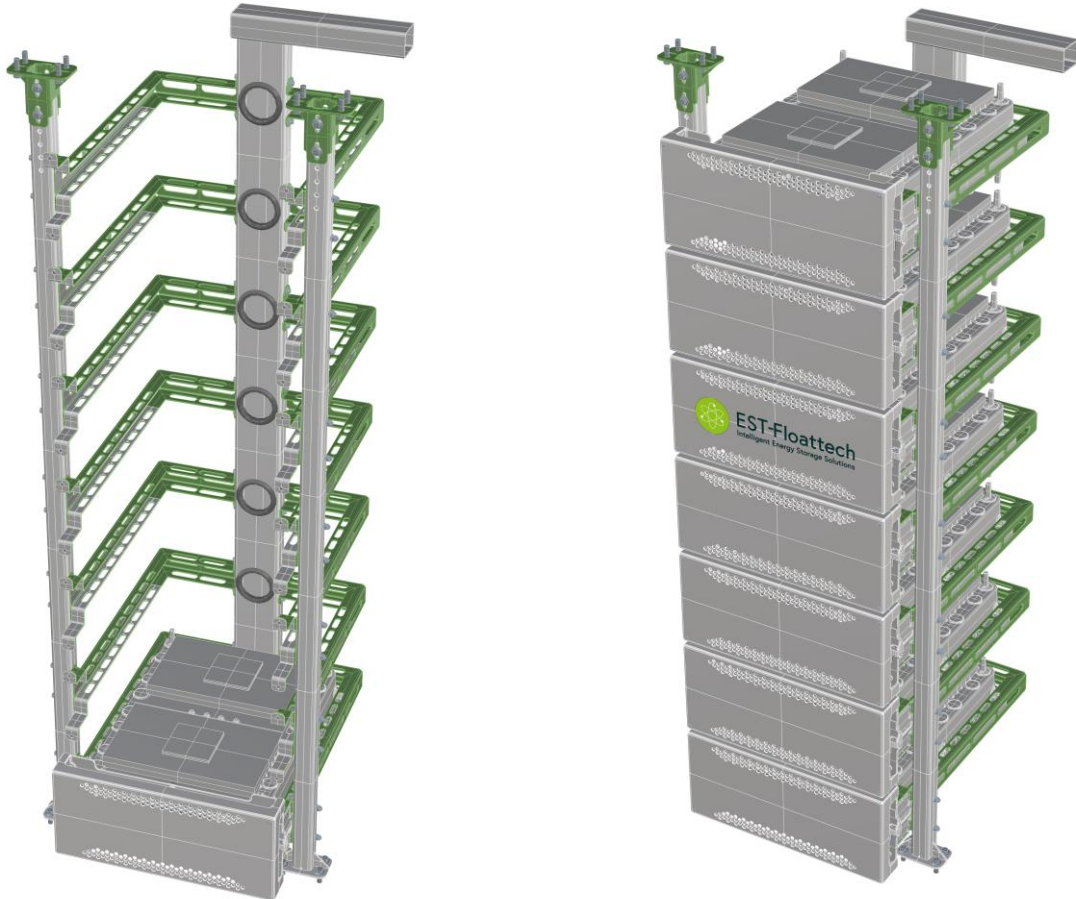
Capacity : 12 x 10 kWh = 120 kWh
Voltage : 12 x 52 VDC = 624 VDC (nominal)



Product

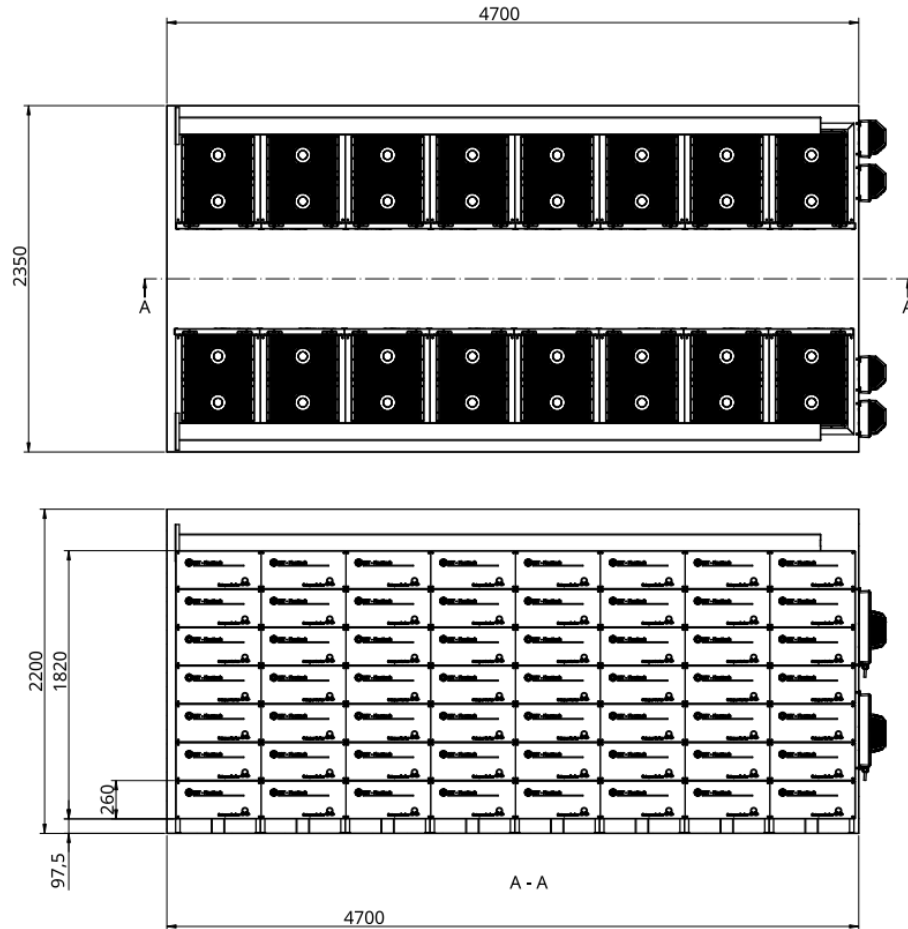
Racking with gas Exhaust System

- Each module connected to off-gas duct
- No thermal runaway gasses in the battery space



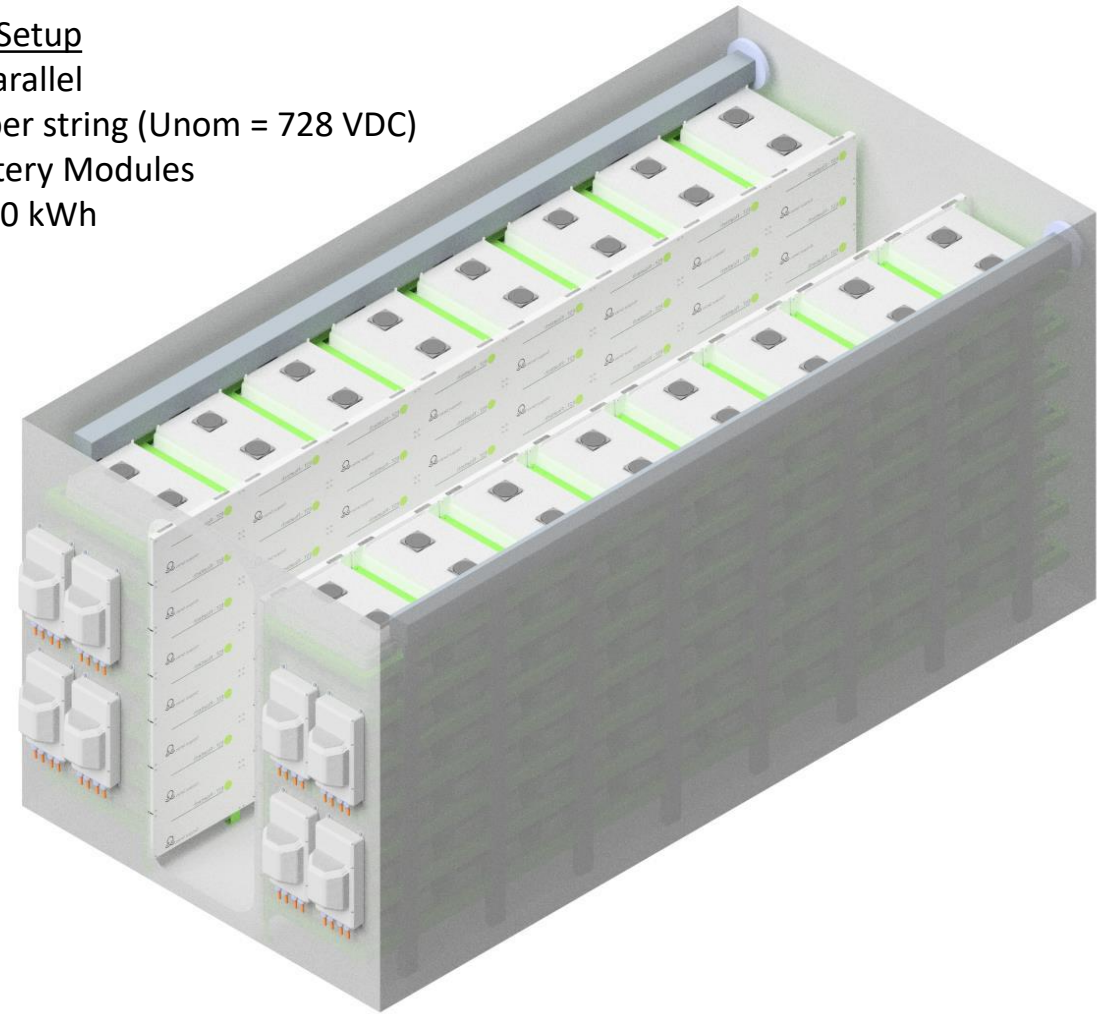
Product

Example battery room (8p14s)



Battery System Setup

- 8 Strings in parallel
- 14 Modules per string ($U_{nom} = 728 \text{ VDC}$)
- Total 112 Battery Modules
- Capacity: 1120 kWh



Product

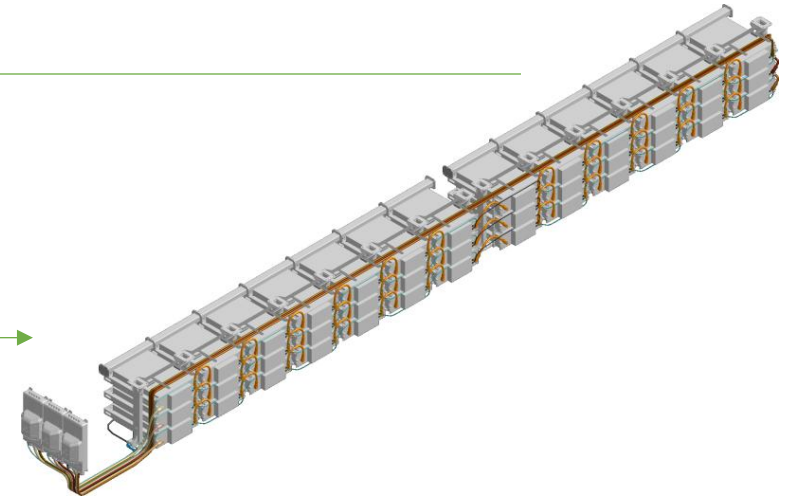


E/S Silverö

Refit: from diesel to fully electric

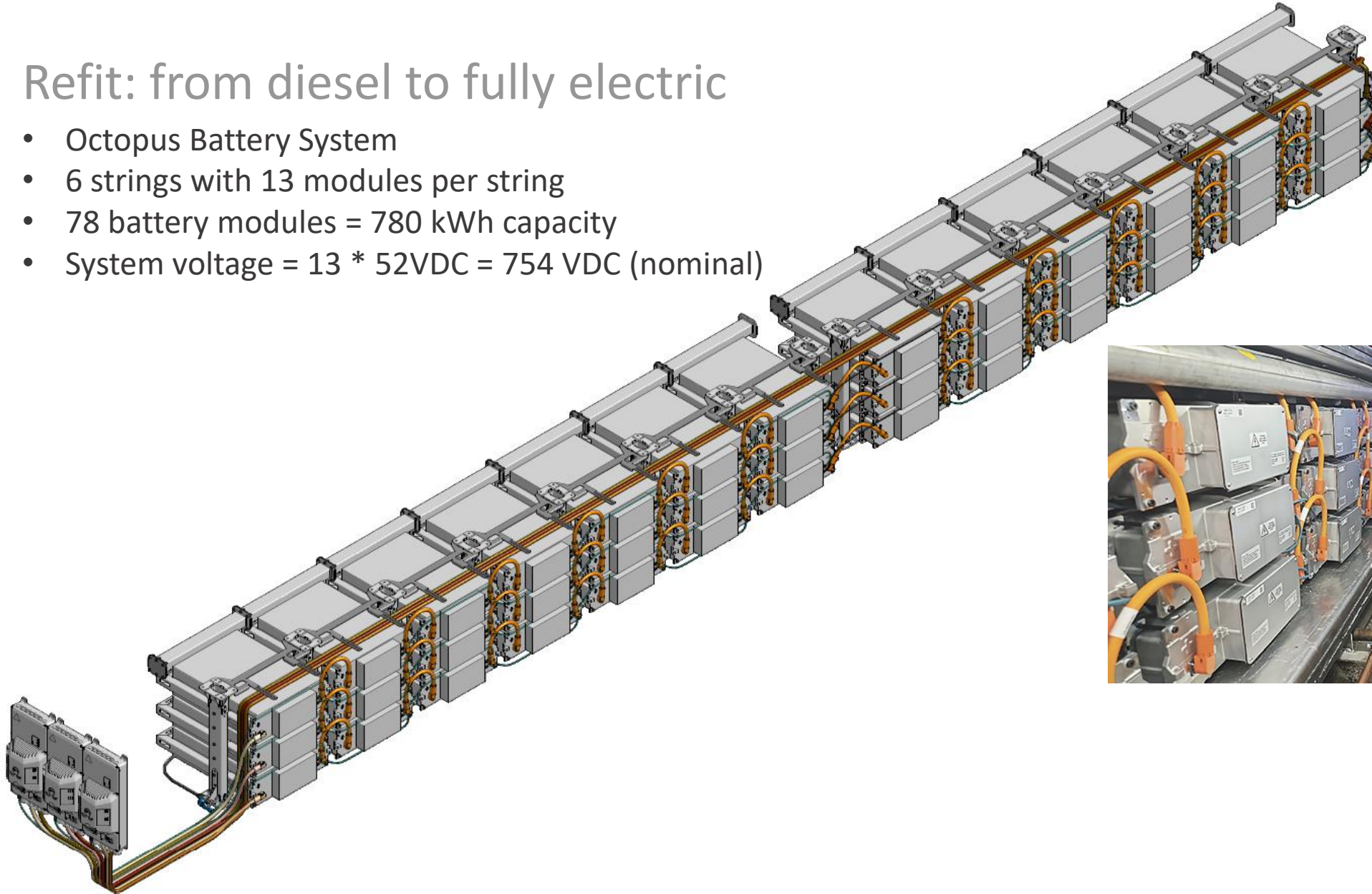
- Octopus Battery System
- 6 strings with 13 modules per string
- 78 battery modules = 780 kWh capacity
- System voltage = $13 * 52\text{VDC} = 754 \text{ VDC}$ (nominal)

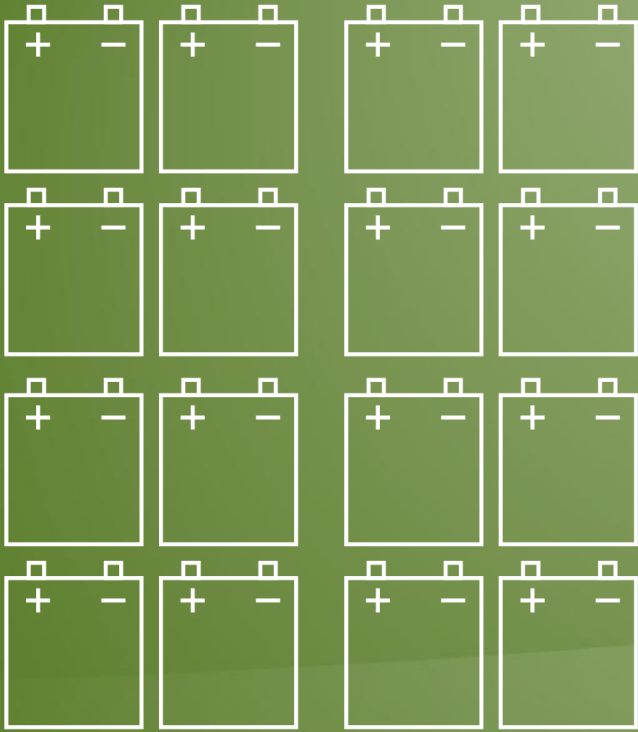
2x →



Refit: from diesel to fully electric

- Octopus Battery System
- 6 strings with 13 modules per string
- 78 battery modules = 780 kWh capacity
- System voltage = $13 * 52\text{VDC} = 754 \text{ VDC}$ (nominal)



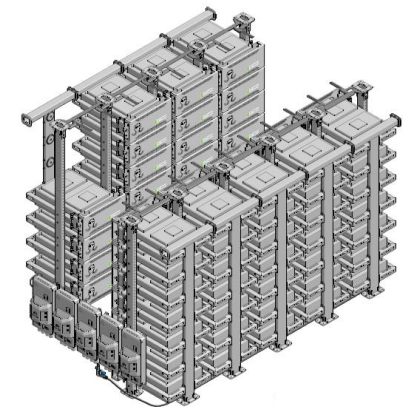
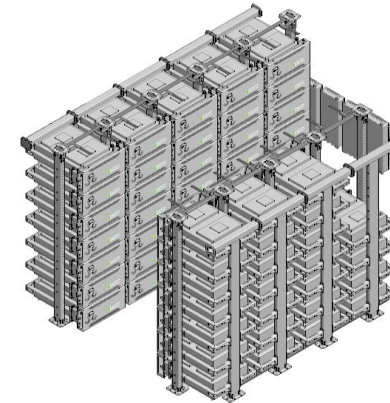


Reference projects

Reference

2x Refit diesel to fully electric passenger vessel

- 1080 kWh (per vessel) Octopus “High Energy” battery system
- Fully electric with 1MW boost charging
- Gothenburg public transport
- Conversion yard: Ö-Varvet, Sweden



Reference

Ferry “Burö”

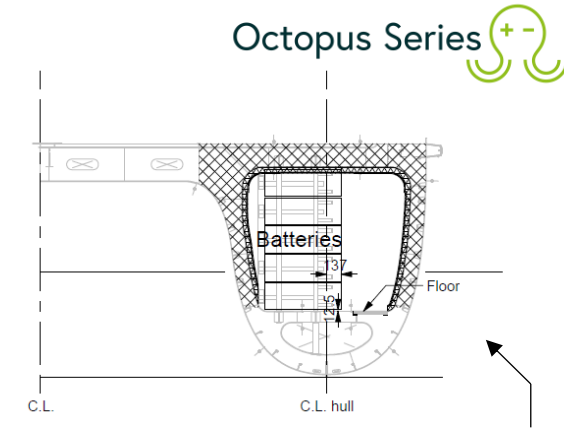
- 840 kWh “High Energy” battery system
- Gothenburg archipelago
- Refit from diesel to fully electric (2023)
- Conversion yard: Ö-Varvet, Sweden



Reference

2x Fast Catamaran Ferry “RIVEER”

- 603,2 kWh “High Power” battery system (per vessel)
- Full electric operation, with interim fast charging
- River ferries for forensic transport (passengers & bikes)
- Built: Holland Shipyards, NL



Reference

Electric Ferry “Dietrichsdorf”

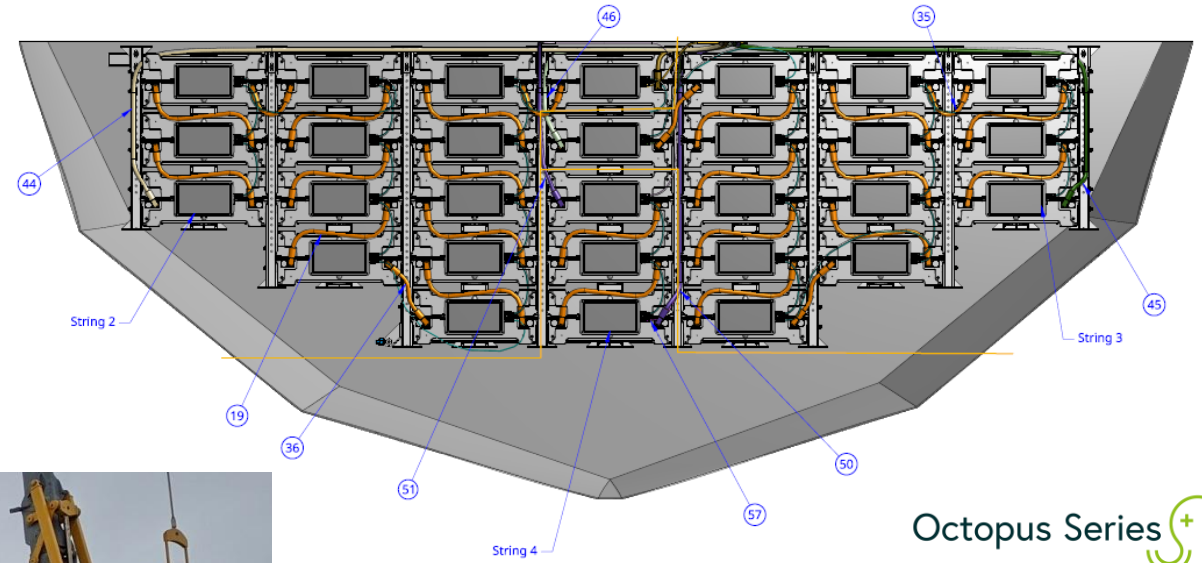
- Installed: 1120 kWh “High Energy” battery system
- Public Transport in Kiel, North Germany
- Built: Holland Shipyards, NL
- Total 7 vessels in fleet with EST-Floattech battery systems



Reference

Port Security vessel “Hamnen”

- 520 kWh “High Energy” battery system
- Port of Gothenburg
- Refit from diesel to fully electric (2023)
- Conversion yard: Ö-Varvet, Sweden



Octopus Series 

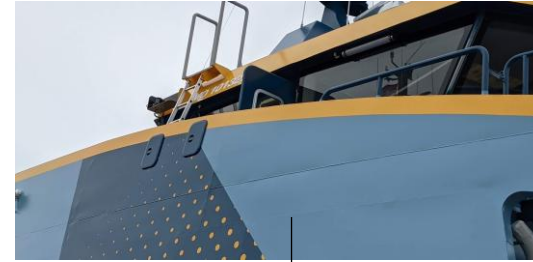


 EST-Floattech

Reference

Fast passenger ferry “Frisia”

- 1.800 kWh “High Energy” Battery System
- Fully Electric and fast charging (1C)
- 7 cycles per day
- Built: Damen Shipyards, NL



Reference

Sightseeing vessel “Elleskär” + sister vessel

- 160 kWh “High Energy” Battery System
- Refit from Diesel to Fully electric
- DNV certified system
- Conversion yard: Hasslö Varv, Sweden

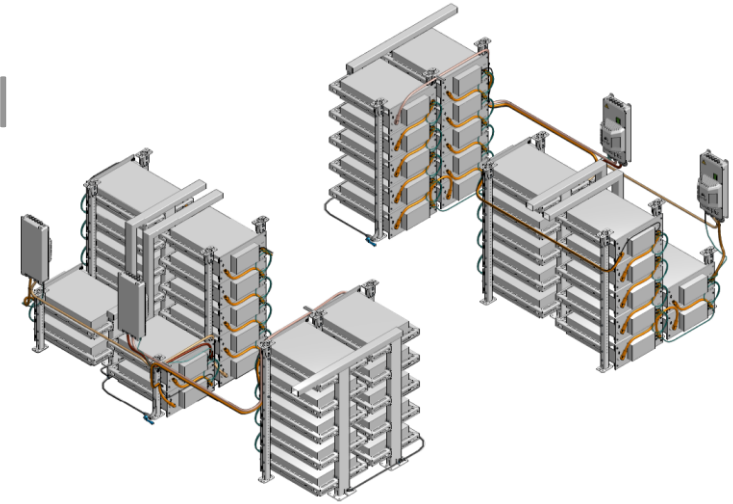


Reference

2x Hybrid Passenger cat “Mars Clipper” + sister vs1

- 480 kWh “High Energy” Battery System (per vessel)
- Uber Boat by Thames Clippers
- Commuting and sightseeing
- Full electric in the London ‘Central Zone’
- Built: Wight Shipyard, UK

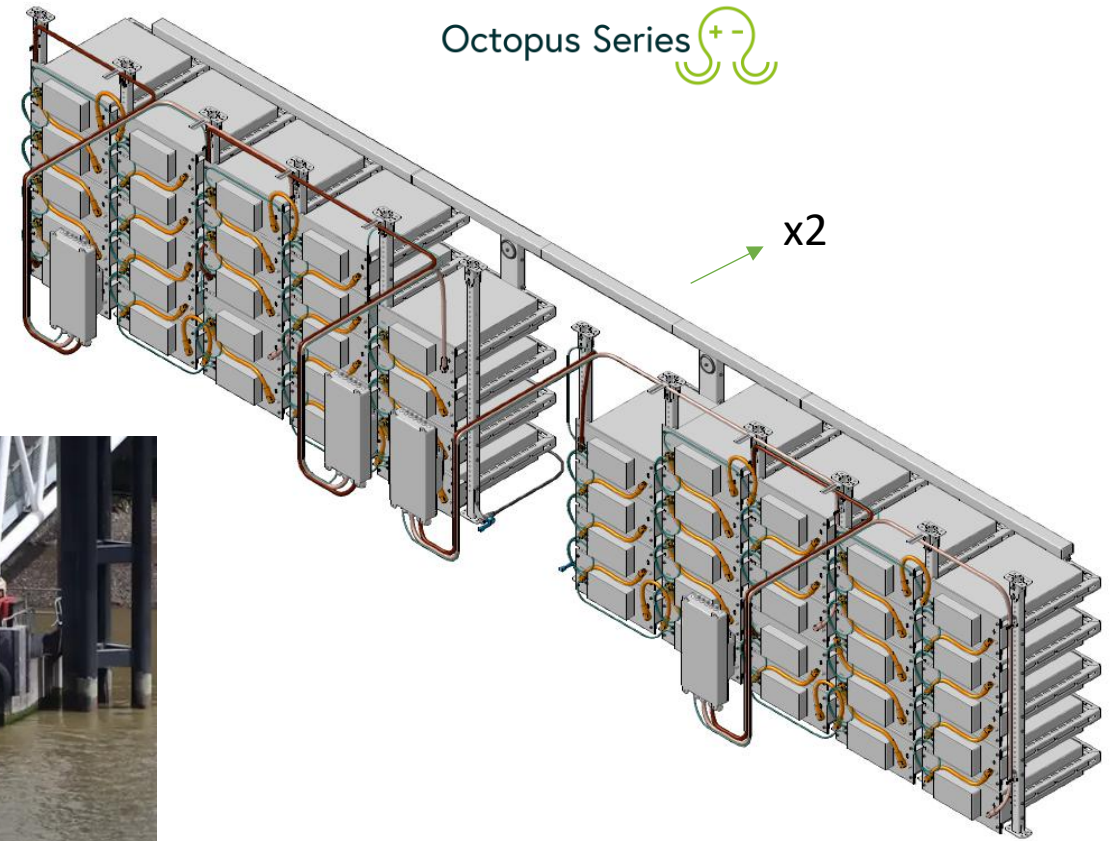
Octopus Series 



Reference

River crossing ferry

- 960 kWh “High Energy” battery System
- Thames river crossing service with passengers and bikes
- Fully electric operation
- Built: Wight Shipyard, UK



Questions?



Contact

Jelle Meindersma
j.meindersma [AT] est-floattech.com